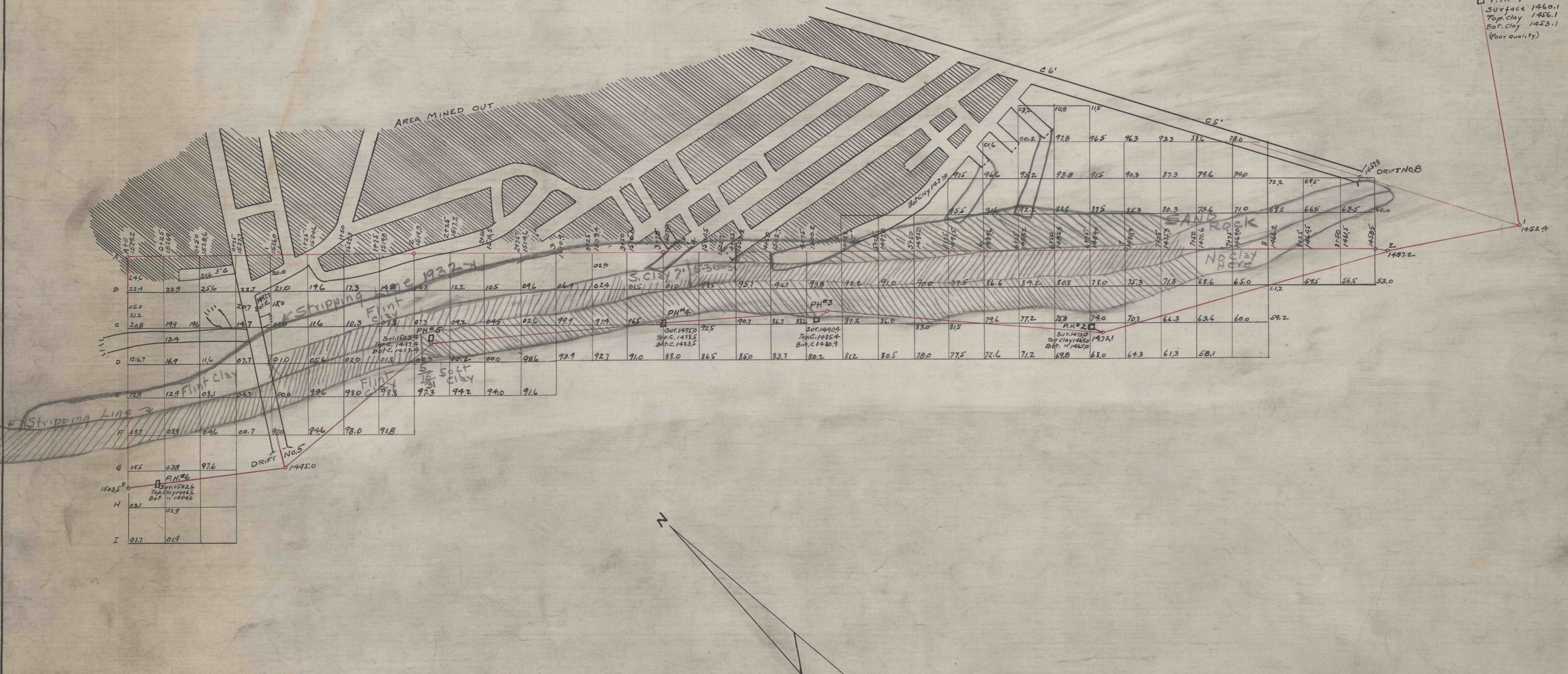


□ P.H.#1
 Surface 1460.1
 Top clay 1456.1
 Bot. clay 1453.1
 (Poor quality)



ESTIMATE:—
 AREA 2.25 ACRES
 COVERAGE 27,598 Cu.Yds.
 CLAY 24,300 GROSS TONS

NORTH AMERICAN REF. CO.
 SUCCESSOR TO

CRESCENT REFRACTORIES CO.
 CURWENSVILLE, CLEARFIELD COUNTY, PA.
 ENGINEERING DEPARTMENT

PROPOSED CLAY STRIPPING
 BETWEEN DRIFTS NO.5 & NO.8 ON
 RIVER HILL - CLINTON CO.,
 QUEENS RUN DIVISION

DRAWN R.J.Z. SCALE 1"=50 FT.
 CHECKED DATE June 27 '29
 REFERENCE ORDER

QR 2000