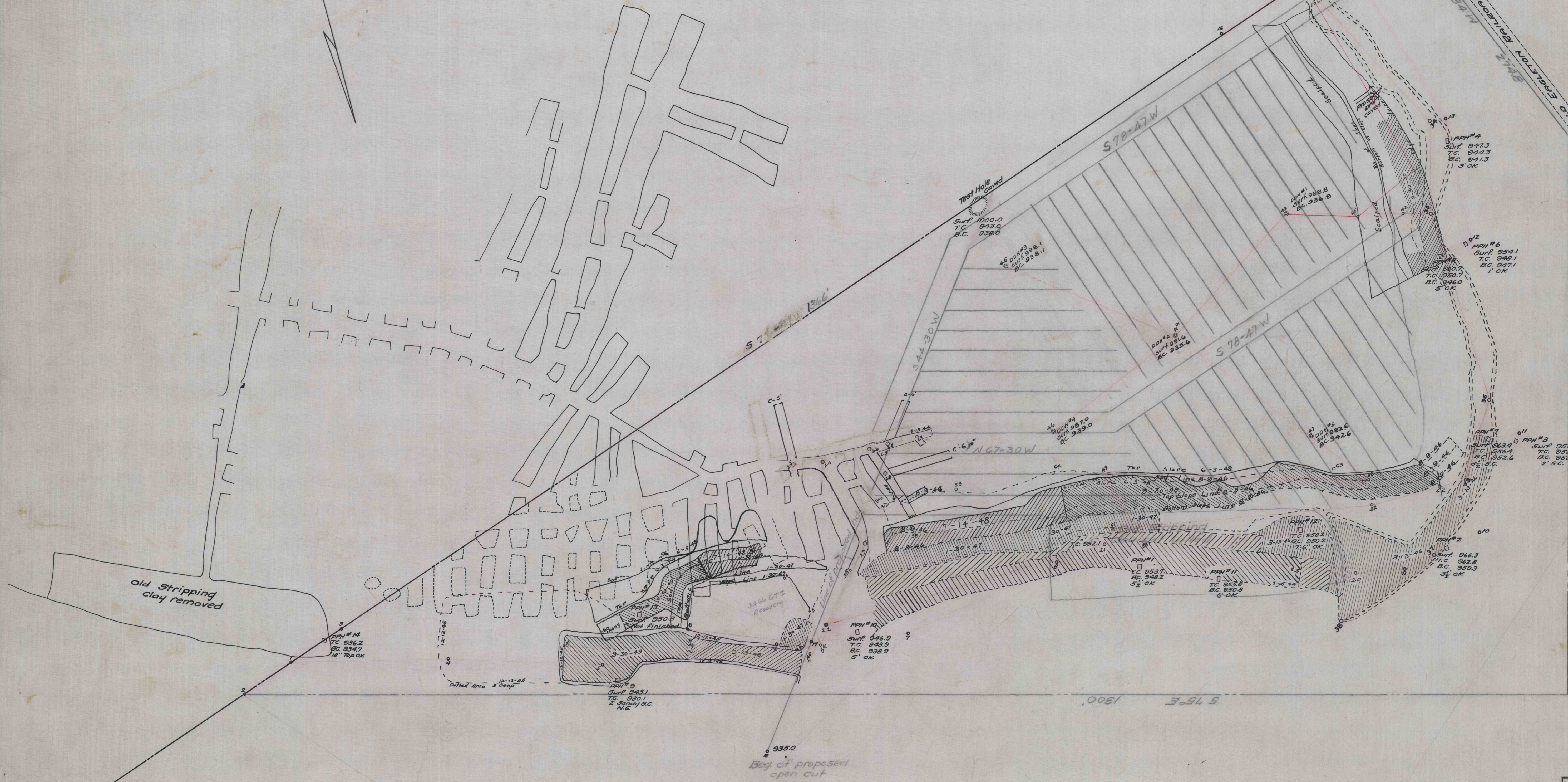


STONE-FULLER

North



old stripping clay removed

335.0
beg of proposed open cut

Location of old mine from Beecher map.

NORTH AMERICAN REFRACTORIES CO.
1012 NATIONAL CITY BANK BUILDING
CLEVELAND, OHIO

BEECHER-BARR CLAY TRACT
BALD EAGLE TWP, CLINTON CO., PA.

DRAWN JON SCALE 1"=50 FT
CHECKED DATE Aug 25, 1943
REFERENCE TRACED BY S.M.B. 20-3-154