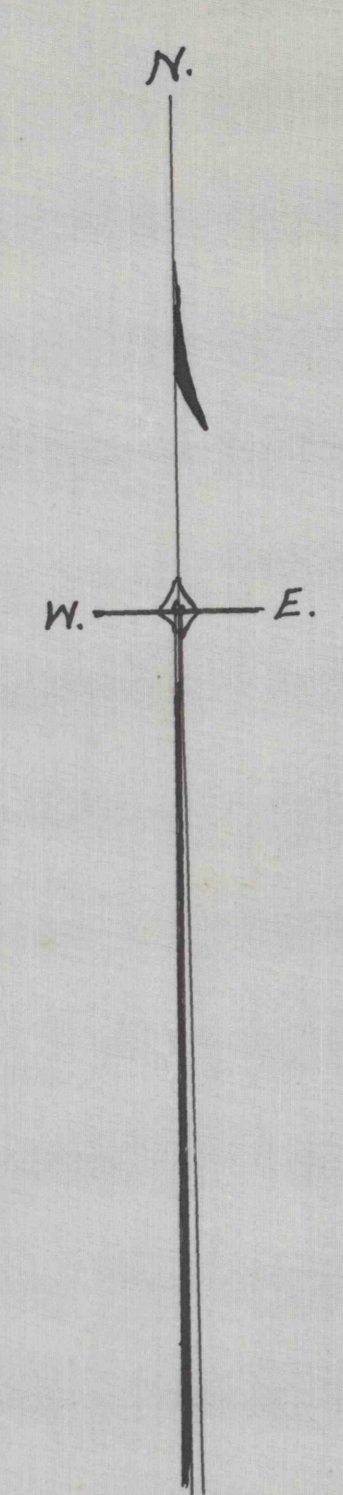
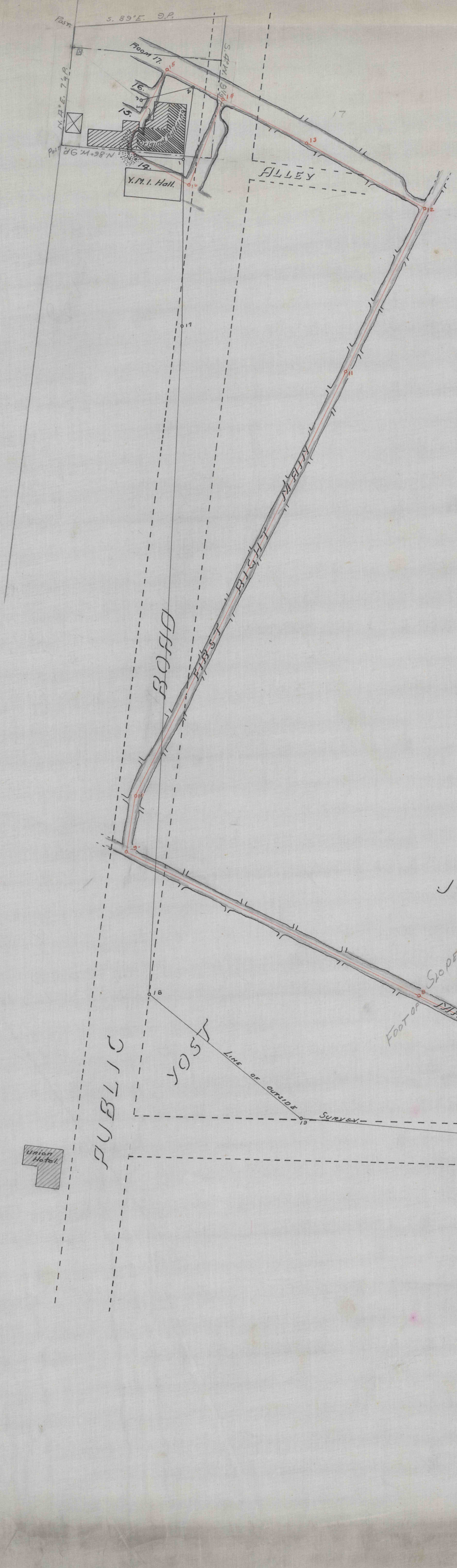


FRANCIS X. CRUIS

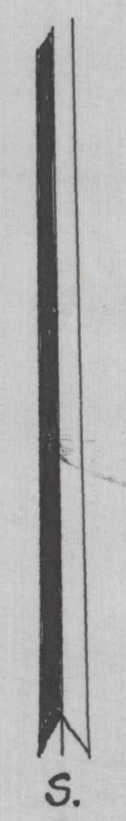
ST. BONIFACE



MAP SHOWING RELATION OF
THE WORKINGS OF
"MINE No. 29," PENNA. COAL & COKE CO.
TO PROPERTY OF
DAVID JOHNSMAN.

ST. BONIFACE, CAMBRIA CO., PA.
SCALE 1" = 50 FT.
CLEARFIELD, PA. SEPT 28-1910. OFFICE OF E. W. HESS, ENGINEER.
SURVEYED SEPT. 22-23, 1910.

390B



1911

1694