

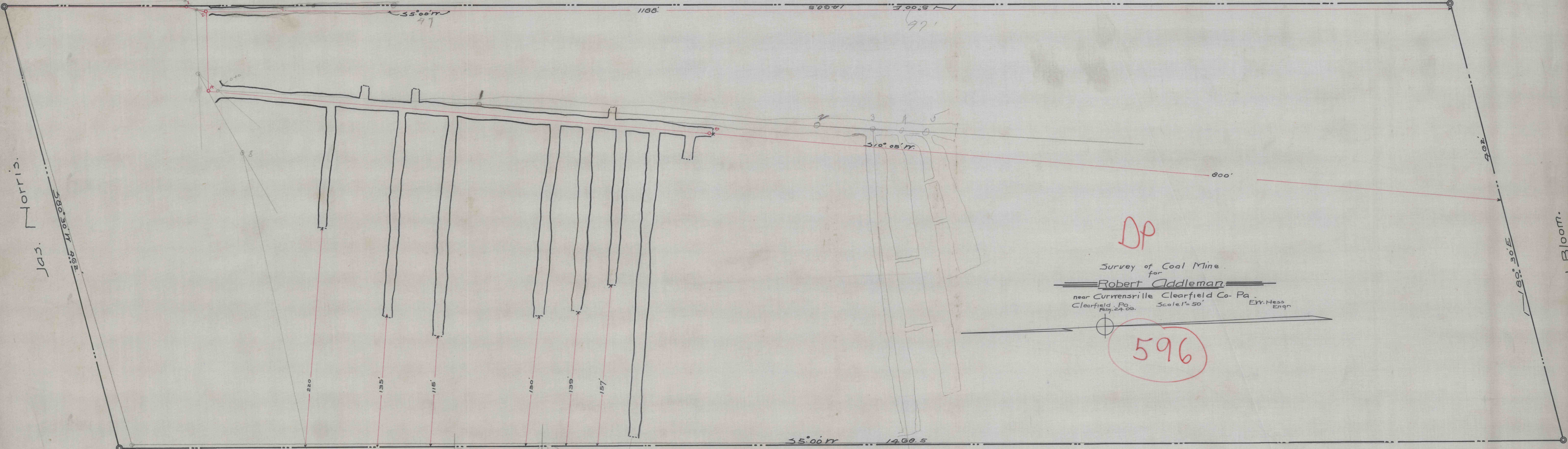
8101

1078

Merritt. Caldwell.

Jos. Morris.  
580° 30' N 2162'

John. I. Bloom.



DP

Survey of Coal Mine.  
for  
Robert Caddleman  
near Currensville Clearfield Co. Pa.  
Clearfield Pa. Scale 1" = 50' E.W. Head  
Engr.

596

Jud. Bloom. (Surface).  
Currensville Fire Brick Co. (Coal).

20e

20e