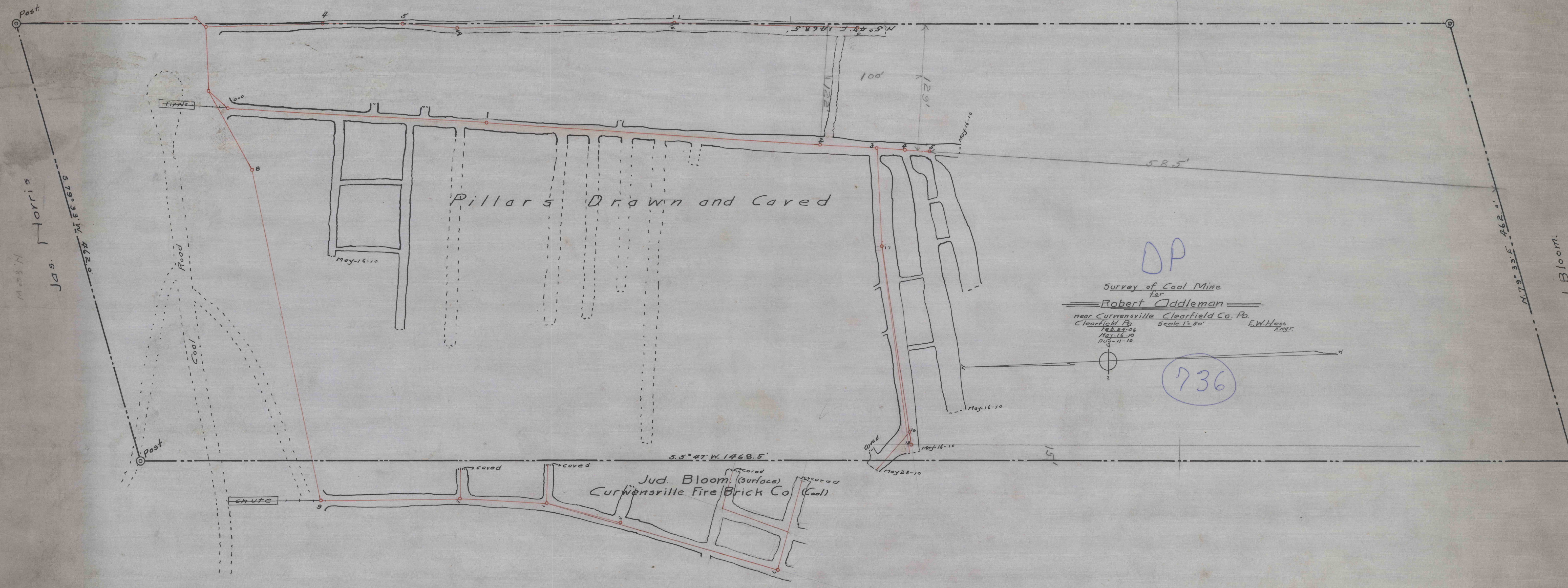


1075

1075

Merritt Caldwell



DP

Survey of Coal Mine
for
Robert Addleman
near Curwensville Clearfield Co. Pa.
Clearfield Pa. Feb. 24-06
May-16-10 Aug-11-10
Scale 1 1/2" = 50' E.W. Hess
Engr.

736

John I. Bloom.