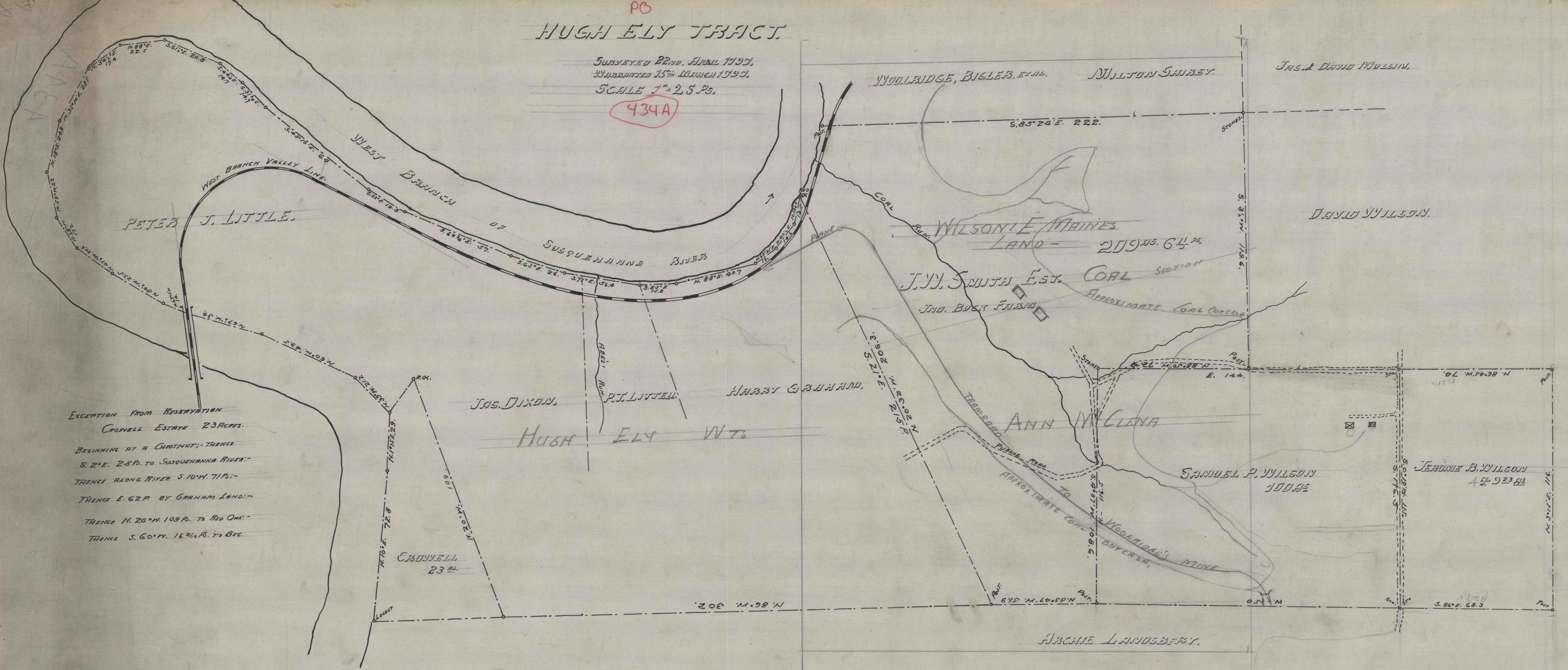


120

HUGH ELY TRACT

SUBVISED 22ND APRIL 1895,
WARRANTED 15TH MARCH 1897,
SCALE 1" = 25 P.S.

434A



EXCEPTION FROM RESERVATION
CROWELL ESTATE 23 ACRES.
BEGINNING AT A CHASTNUT; - THENCE
S. 2° E. 25 P. TO SUSQUEHANNA RIVER; -
THENCE ALONG RIVER S. 10° W. 71 P.; -
THENCE E. 62 P. BY GRAHAM LAND; -
THENCE N. 20° W. 109 P. TO RED OAK; -
THENCE S. 60° W. 16 3/4 P. TO BEG.

150