

B, 26, 6

CAMBRIA COUNTY COAL CO.

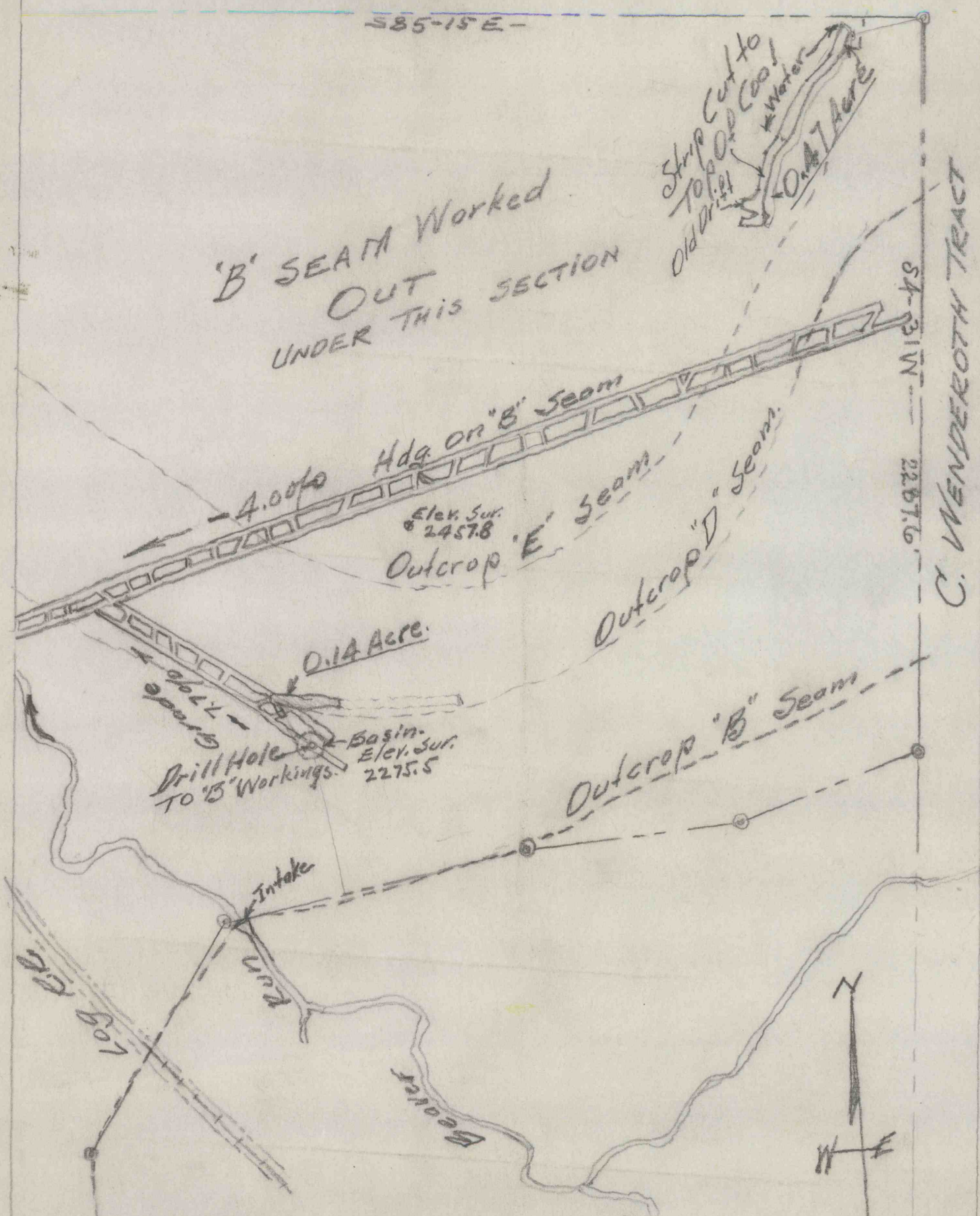
585-15E-

'B' SEAM Worked
OUT
UNDER THIS SECTION

Strip Cut to
Top of 'D' Seam
Old Drift
Water
0.47 Acre

C. WENDEROTH TRACT

54-31W-2287.6-



LICK RUN COAL CO.

Supplemental Map

Showing Coal Area Uncovered
- On NE Corner of Lands -

Scale 1=400' Engineering Offices, April 25, 1959.
Gardner M. Stokes
Lloydell, Pa.

Reg. Prof. Engr No 1694.