

REFERENCE DATA

CRESCENT REFRACTORIES CO.

CURWENSVILLE, CLEARFIELD COUNTY, PA.

ENGINEERING DEPARTMENT

MRS. ADDIE M. HIPPS.

LOCATION OF DRILL HOLES  
LUMBER CITY, PA.

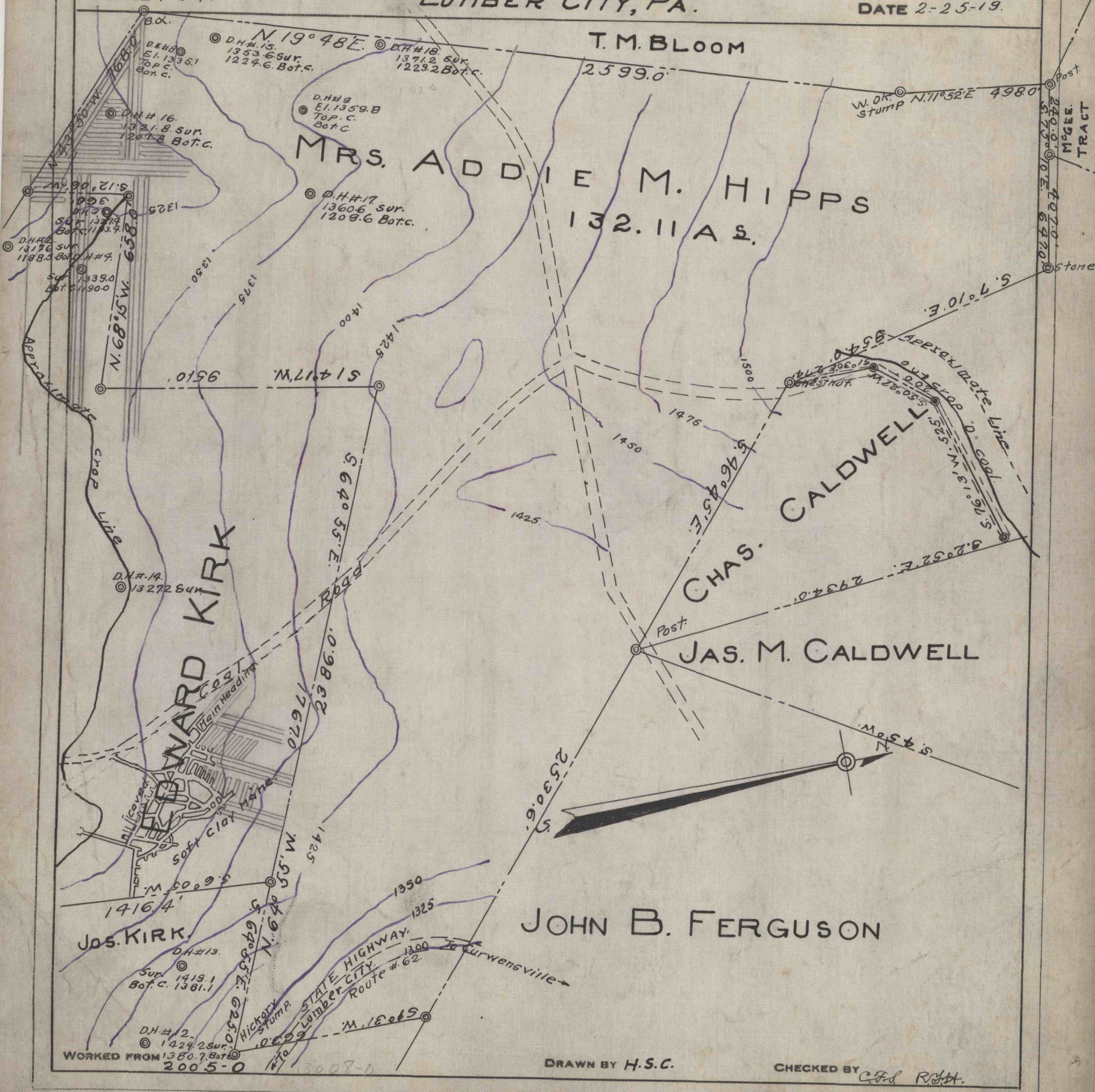
ENV. No. ~~M2~~

SHEET NO. 64

55-3-108

DATE 2-25-19.

SCALE 1" = 400'



WORKED FROM 1380.7 Bot. C. 2005.0

DRAWN BY H.S.C.

CHECKED BY C.F. R.H.