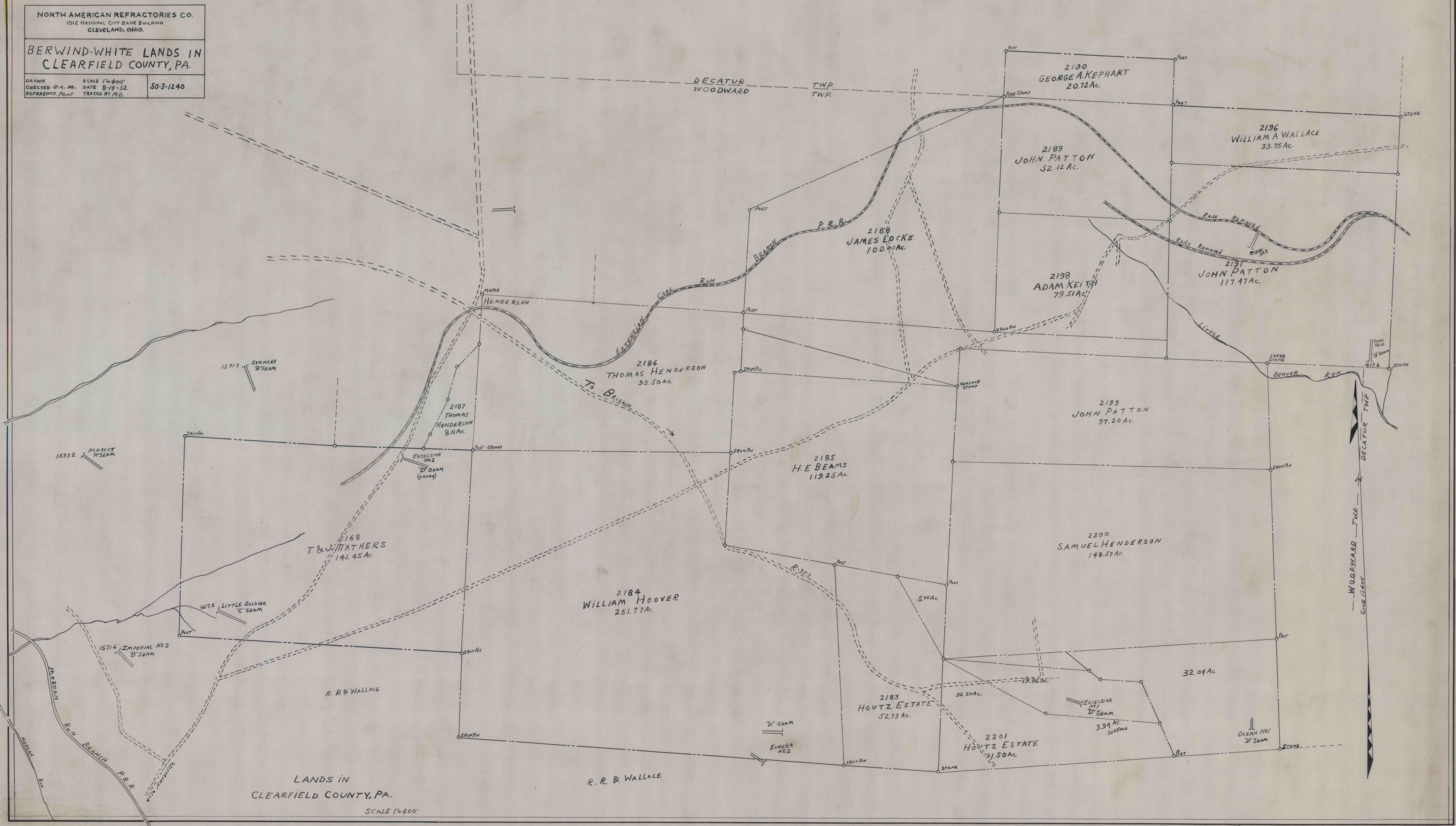


NORTH AMERICAN REFRACTORIES CO.
1012 NATIONAL CITY BANK BUILDING
CLEVELAND, OHIO.

BERWIND-WHITE LANDS IN
CLEARFIELD COUNTY, PA.

DRAWN SCALE 1"=400'
CHECKED J.C.M. DATE 8-19-52
REFERENCE PRINT TRACED BY M.D. 50-3-1240



LANDS IN
CLEARFIELD COUNTY, PA.

SCALE 1"=400'