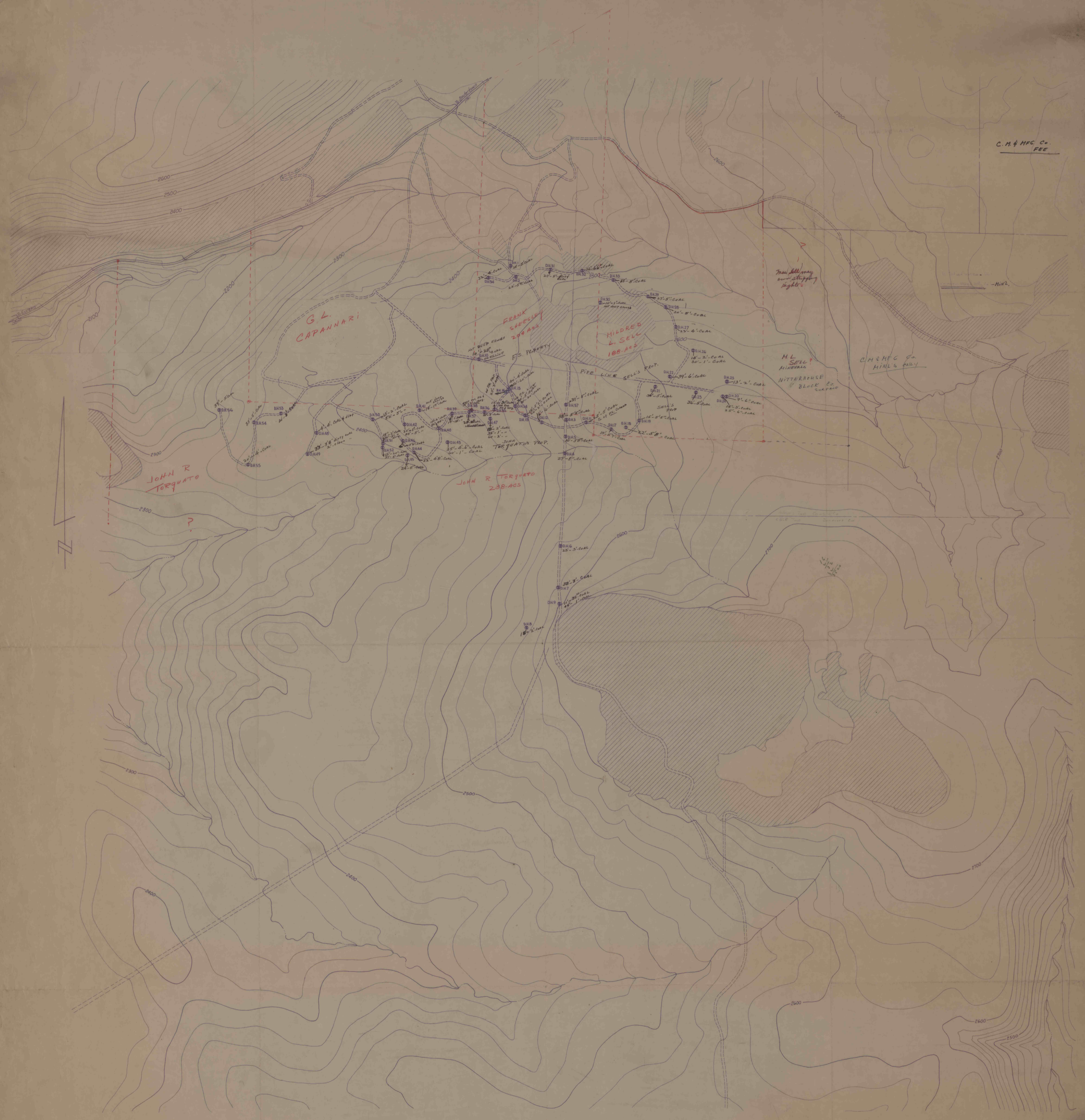


C. M. & HFC Co.
FEE



COONEY BROS. COAL CO.

BITUMINOUS COAL STRIPPING OPERATIONS

SITUATE IN

ADAMS TWP, CAMBRIA CO. & OGLE TWP, SOMERSET CO. PA.

SCALE: 1" = 400'

GWIN, DOBSON & FOREMAN, INC.
CONSULTING ENGINEERS
ALTOONA, PENNSYLVANIA

UNOFFICIAL
FOR STUDY PURPOSES ONLY
DATE: DEC. 7, 1931