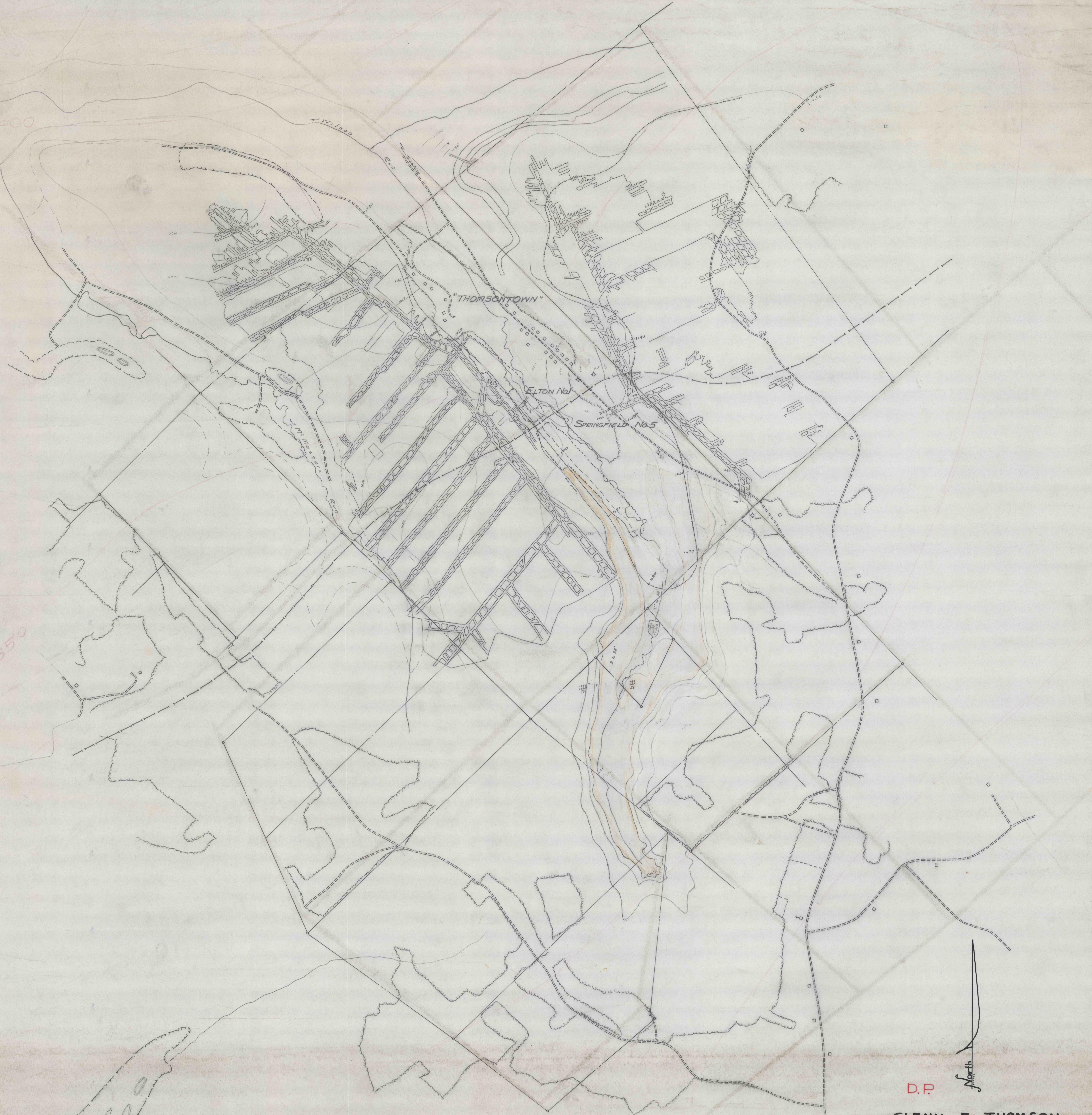
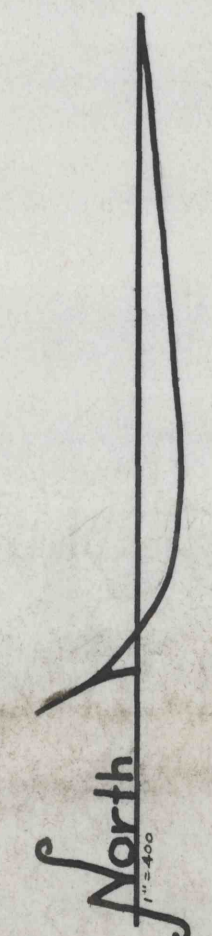


600

1550



D.P.



GLENN E. THOMSON
 MAP OF
COAL PROPERTIES NEAR THOMSONTOWN
 CHEST TOWNSHIP, CLEARFIELD COUNTY, PENNA.
SCALE - 1 INCH = 400 FEET
 AUGUST 29, 1963
 CLEARFIELD, PA.

JOHN W. HESS
 ENGINEER

01A

410