

FRED W. SORGEN COAL OPERATION ON  
NORTH AMERICAN REFRACTORIES COMPANY  
436 A<sub>s</sub> 94 P. TRACT.

REFERENCE DATA LEIDY TOWNSHIP.

CLINTON COUNTY.

NORTH AMERICAN REFRACTORIES CO.

1012 NATIONAL CITY BANK BUILDING  
CLEVELAND, OHIO

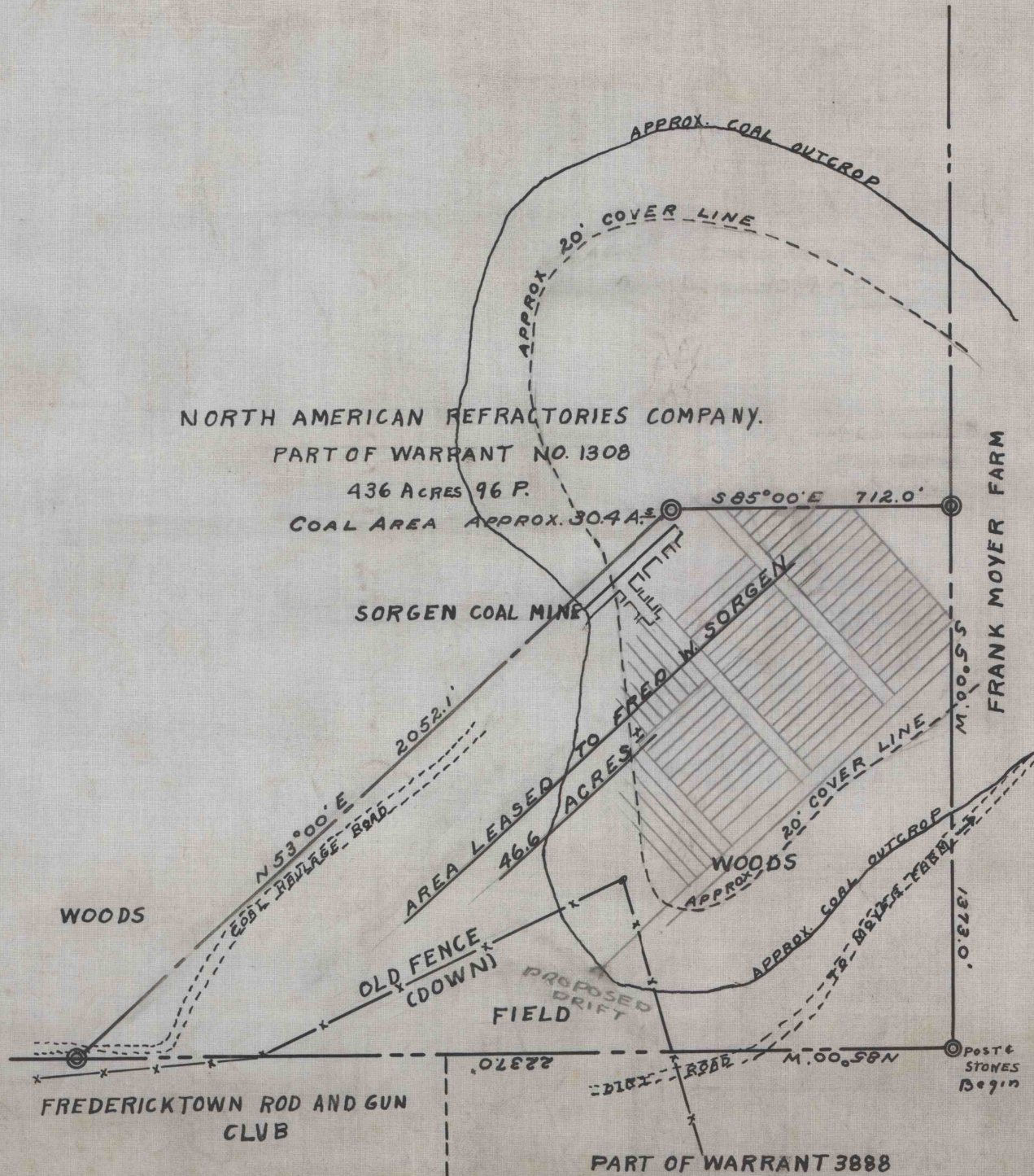
ENV. No.

SHEET No.

40-3-70

SCALE 1"=400'

DATE - 8/14/39



WORKED FROM 40-3-46

DRAWN BY R. H. Jr.

CHECKED BY

*J. H. Jr.*