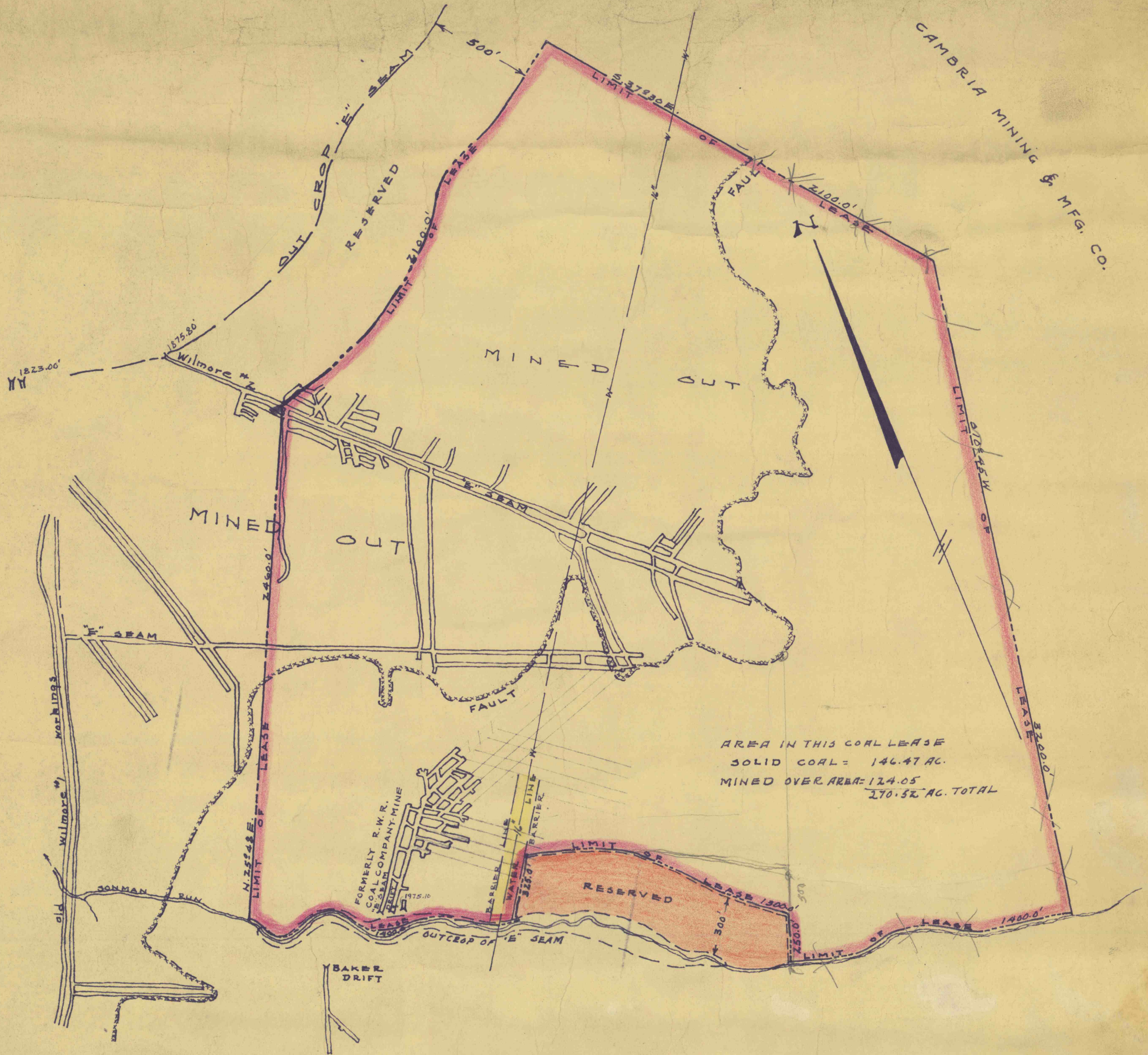


CAMBRIA MINING & MFG. CO.



AREA IN THIS COAL LEASE
 SOLID COAL = 146.47 AC.
 MINED OVER AREA = 124.05
 270.52 AC. TOTAL

MAP

SHOWING AREA OF "E" SEAM COAL LEASE
 FROM
 CAMBRIA MINING & MANUFACTURING CO.
 TO
 RICHARD H. LAMAR
 PORTAGE TWP. CAMBRIA COUNTY, PENNA.
 SCALE 1" = 400'

JULY 15, 1961

JOHN H. WELD
 REG. ENGR. #12655

1961-21-4
 100' = 1" = 1
 Cambria Mining & Manufacturing Co.