

NEW ORANGE & ...  
NEW CREEK WATER PERMITS  
THOMPSON & PARTNERS CIVIL ENGRS.

MAIS & NO. 13.  
STEPHEN KEPHANT  
SAMUEL HOLLIDAY  
BOYNTON  
FLYNN

Scale 1" = 400'

Augustus Kephant 9.1 A.  
Samuel H. Kephant 86.1 A.  
Boynton

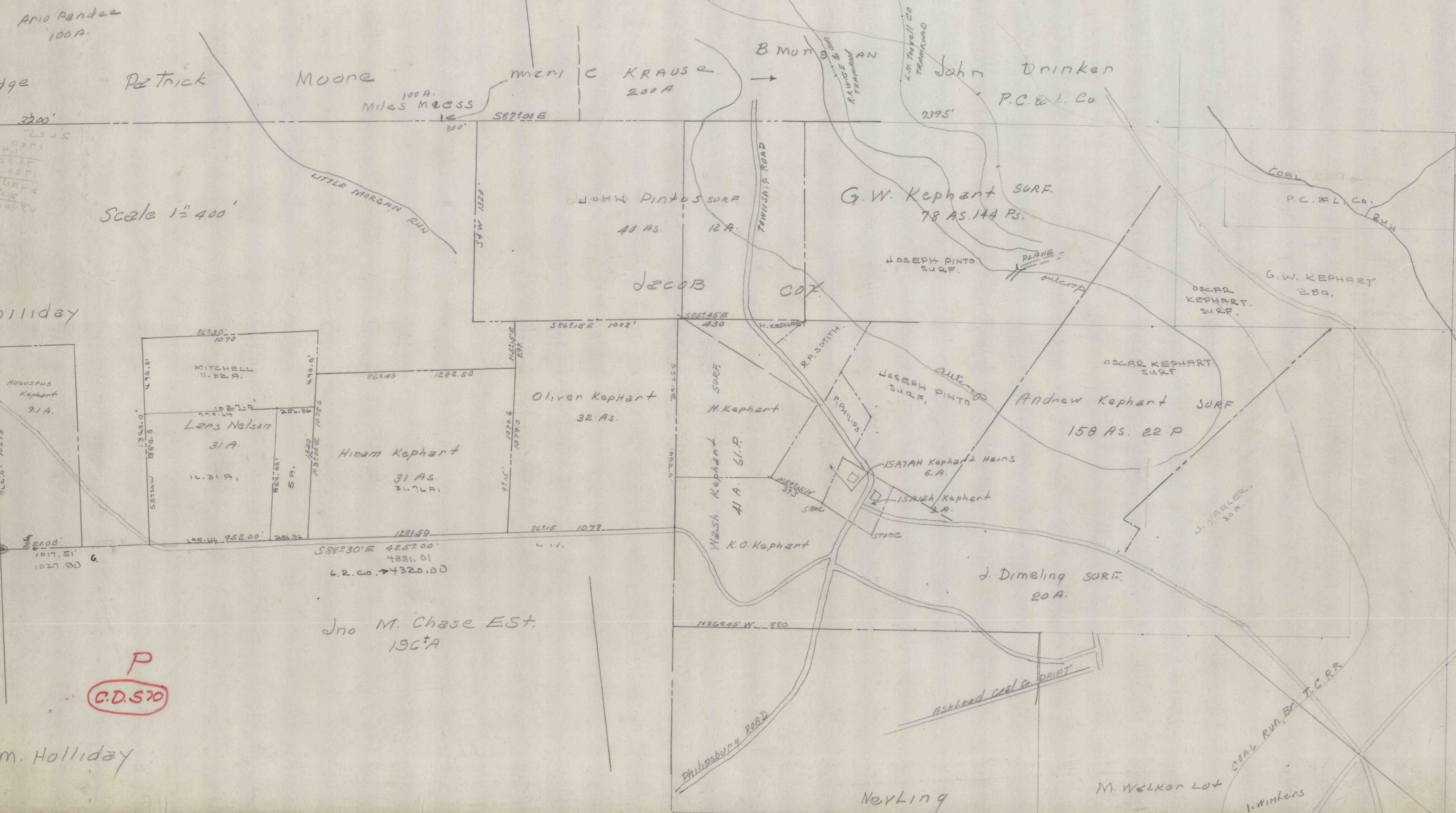
Wm. Holliday

John M. Chase EST. 196<sup>th</sup>

Philipsburg Road

M. Welton Lot

I. Winklers



P  
C.D. 570