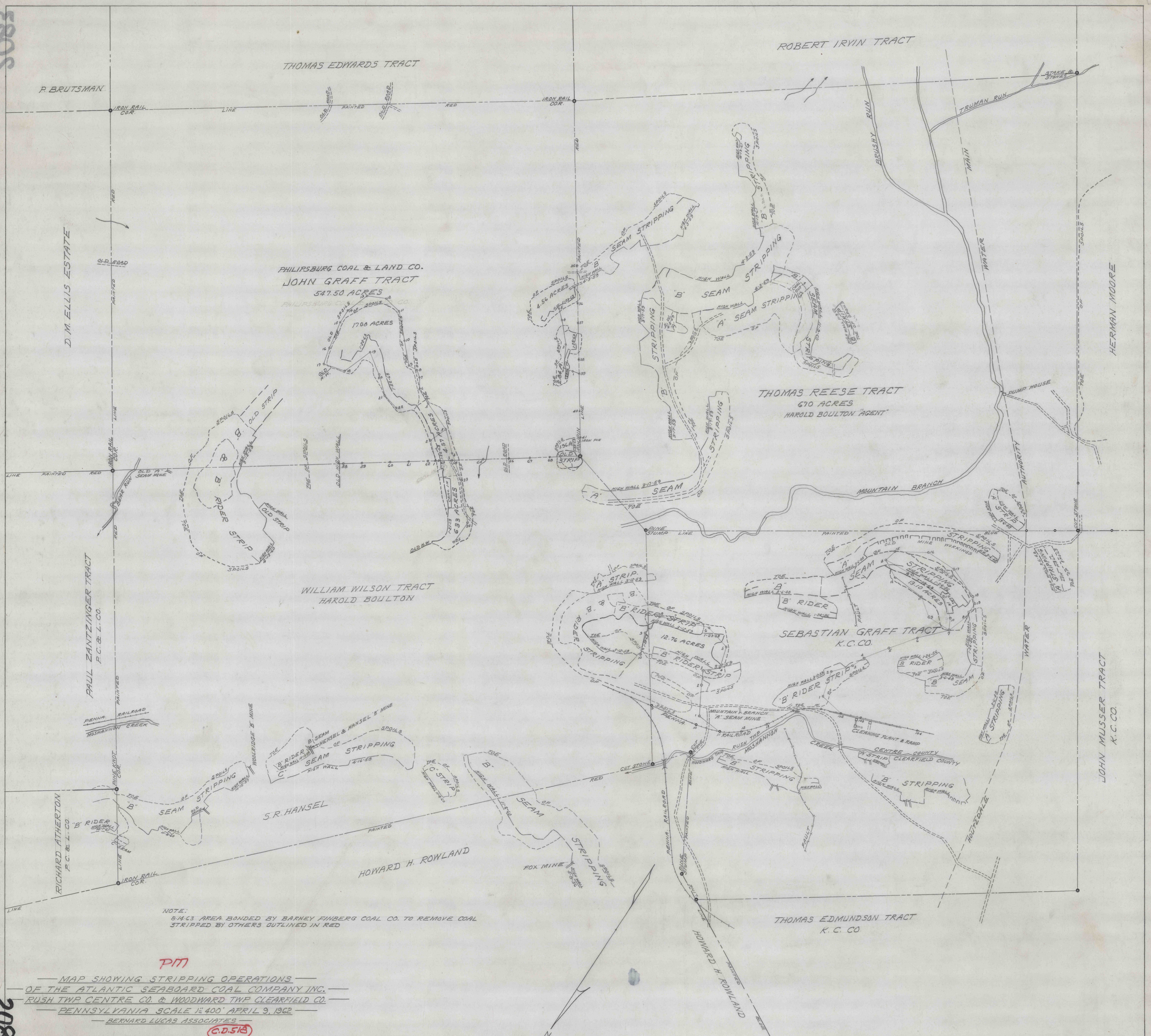


5085



NOTE:
 8-14-63 AREA BONDED BY BARNEY FINBERG COAL CO. TO REMOVE COAL
 STRIPPED BY OTHERS OUTLINED IN RED

PM

MAP SHOWING STRIPPING OPERATIONS
 OF THE ATLANTIC SEABOARD COAL COMPANY INC.
 RUSH TWP CENTRE CO. & WOODWARD TWP CLEARFIELD CO.
 PENNSYLVANIA SCALE 1"=400' APRIL 9, 1962
 BERNARD LUCAS ASSOCIATES

C.D. 518

2083