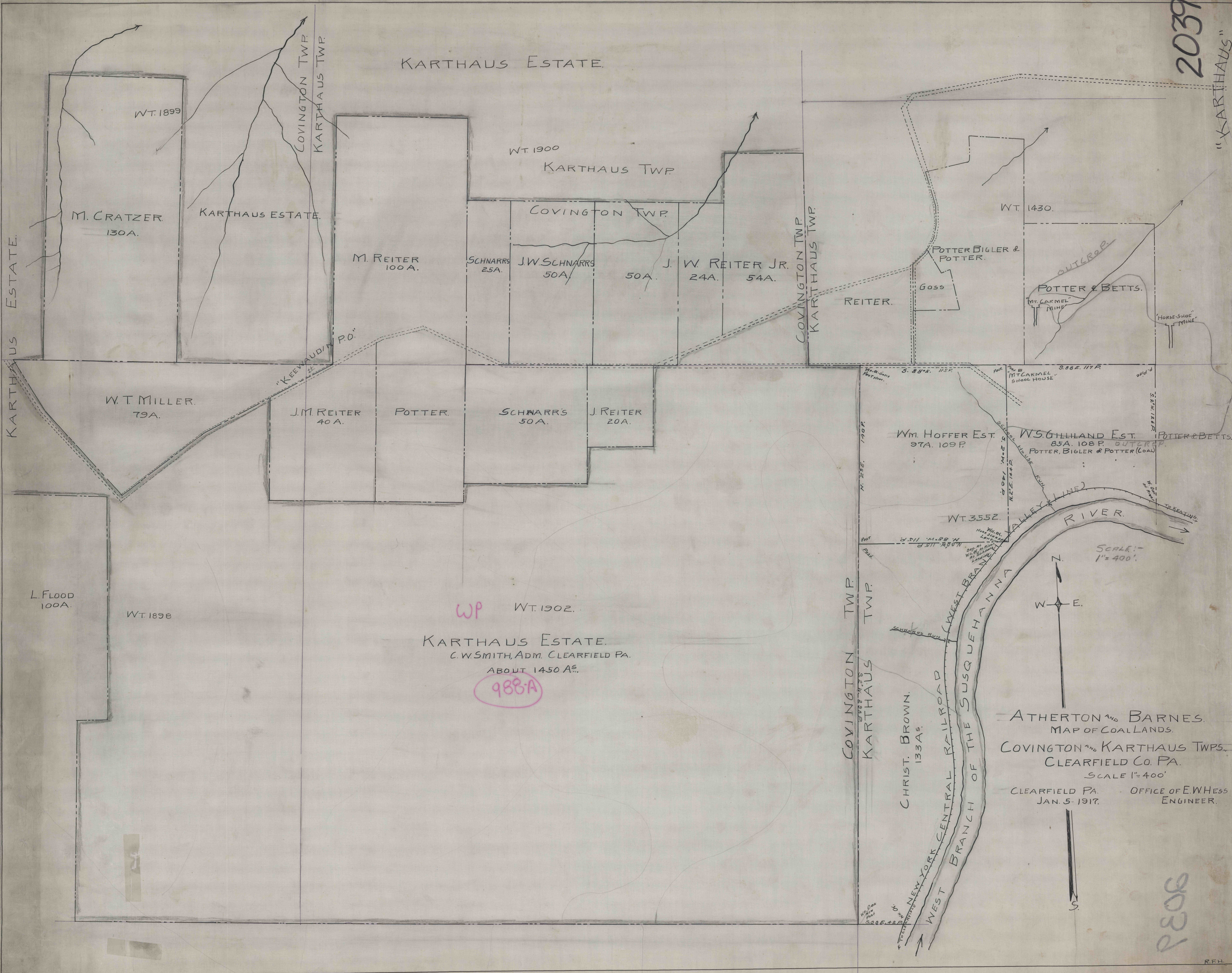


2039
"KARTHAUS"



KARTHAUS ESTATE.

WT. 1900
KARTHAUS TWP.

COVINGTON TWP.

COVINGTON TWP.
KARTHAUS TWP.

WT. 1430.

WT. MILLER.
79A.

J.M. REITER
40A.

POTTER.

SCHNARRS
50A.

J. REITER
20A.

Wm. HOFFER EST.
97A. 109P.

W.S. GILLILAND EST.
85A. 108P.

L. FLOOD
100A.

WT. 1898

WP WT. 1902.

KARTHAUS ESTATE.
C. W. SMITH, ADM. CLEARFIELD PA.
ABOUT 1450 A^c.

988-A

COVINGTON TWP.
KARTHAUS TWP.

CHRIST. BROWN.
133A5.

NEW YORK CENTRAL RAILROAD
WEST BRANCH OF THE SUSQUEHANNA RIVER.

SCALE: 1" = 400'

W E

ATHERTON AND BARNES.
MAP OF COALLANDS.
COVINGTON AND KARTHAUS TOWNSHIPS.
CLEARFIELD CO. PA.
SCALE 1" = 400'

CLEARFIELD PA. OFFICE OF E. W. HESS
JAN. 5. 1917. ENGINEER.

2039

R.F.H.