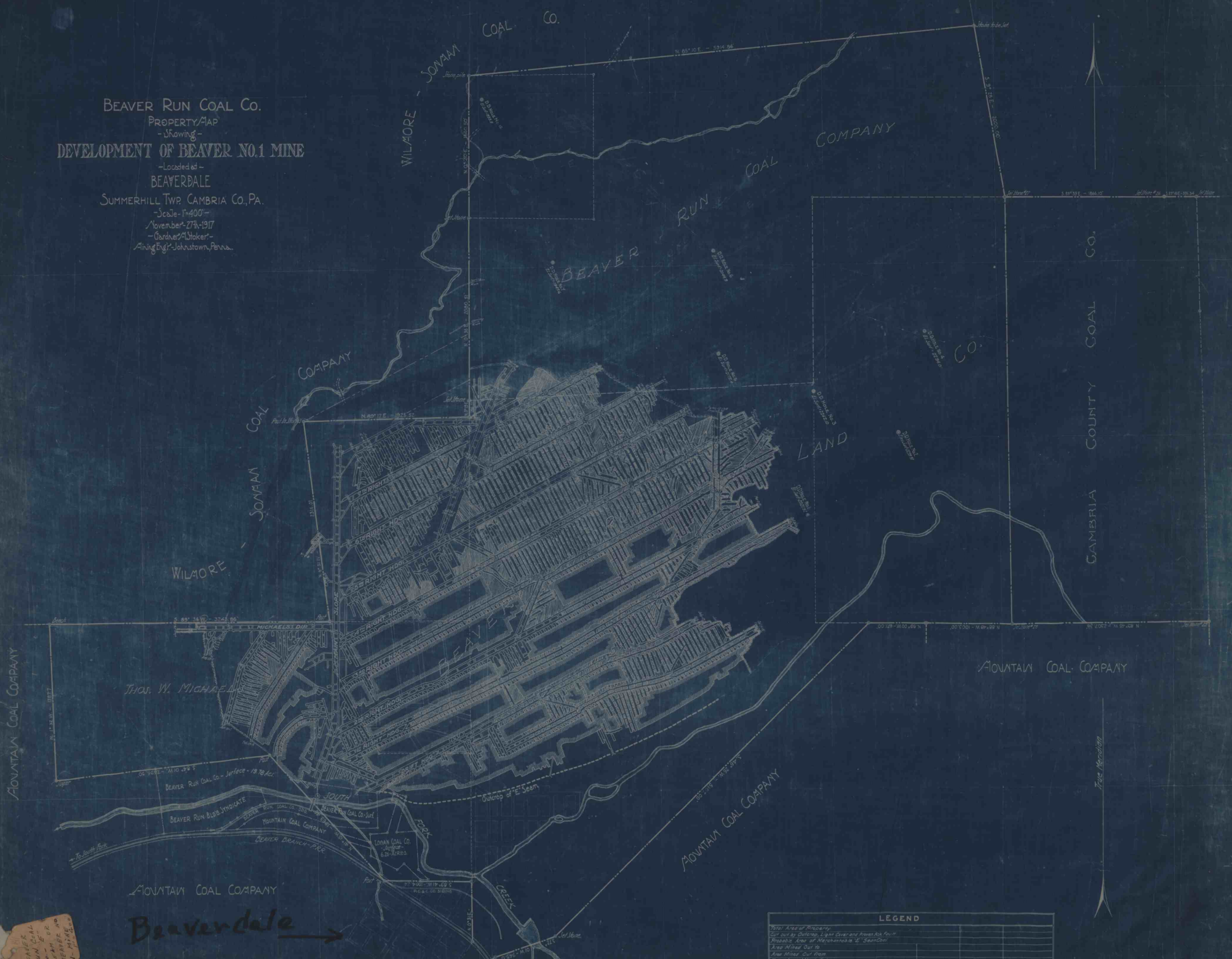


BEAVER RUN COAL Co.
 PROPERTY MAP
 -Showing-
 DEVELOPMENT OF BEAVER NO.1 MINE

-Located at-
 BEAVERDALE
 SUMMERHILL TWP. CAMBRIA Co., PA.
 -Scale- 1"=400'-
 November 27th 1917
 -Gardner & Stoker-
 Mining Engs. - Johnstown, Penna.



MOUNTAIN COAL COMPANY

Beaverdale →

LEGEND

Thin Lines	Area of Property
Light Lines	Line of Shafting, Light Cuts and Airways
Thick Lines	Line of Shafting and Airways
Double Lines	Line of Shafting and Airways
Single Lines	Line of Shafting and Airways
Double Lines	Line of Shafting and Airways
Single Lines	Line of Shafting and Airways
Double Lines	Line of Shafting and Airways
Single Lines	Line of Shafting and Airways

Note: Average Thickness 7' 2"

BEAVER RUN COAL Co.
 -Showing-
 DEVELOPMENT OF BEAVER NO.1 MINE