

THE "JORDAN TRACT"

LAWRENCE TWP. - CLEARFIELD CO. - PA.

OWNED BY NORTH AMERICAN REFRACTORIES CO.

REFERENCE DATA

NORTH AMERICAN REFRACTORIES CO.

1012 NATIONAL CITY BANK BUILDING
CLEVELAND, OHIO

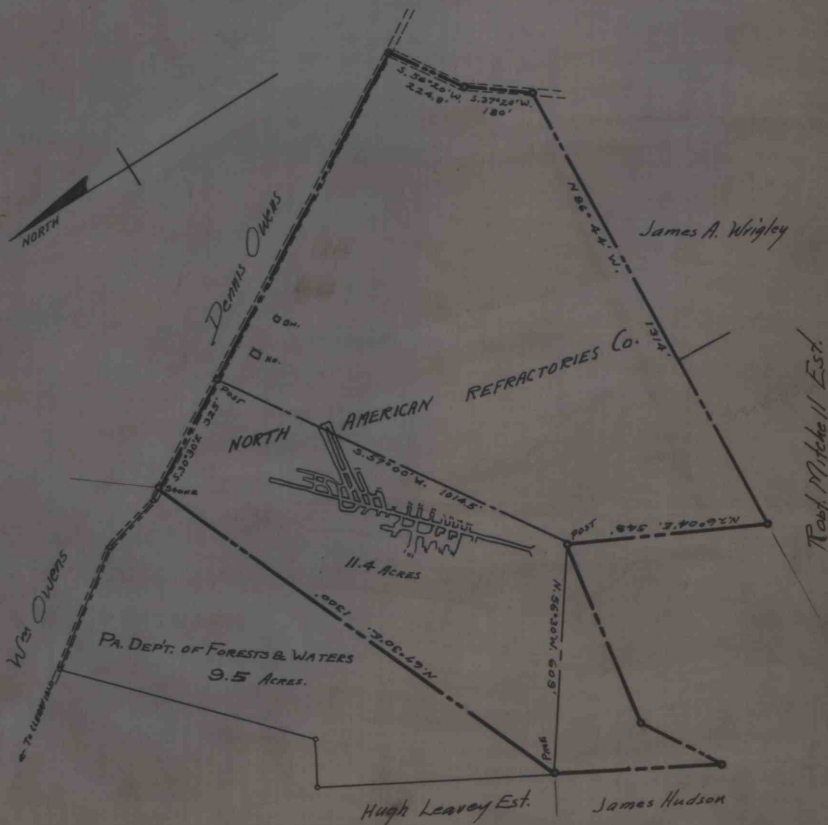
ENV. No.

SHEET No.

45-3-56

SCALE 1" = 300 Ft.

DATE Dec. 3, 1938



WORKED FROM 45-3-34

DRAWN BY *J. J. J.*

CHECKED BY