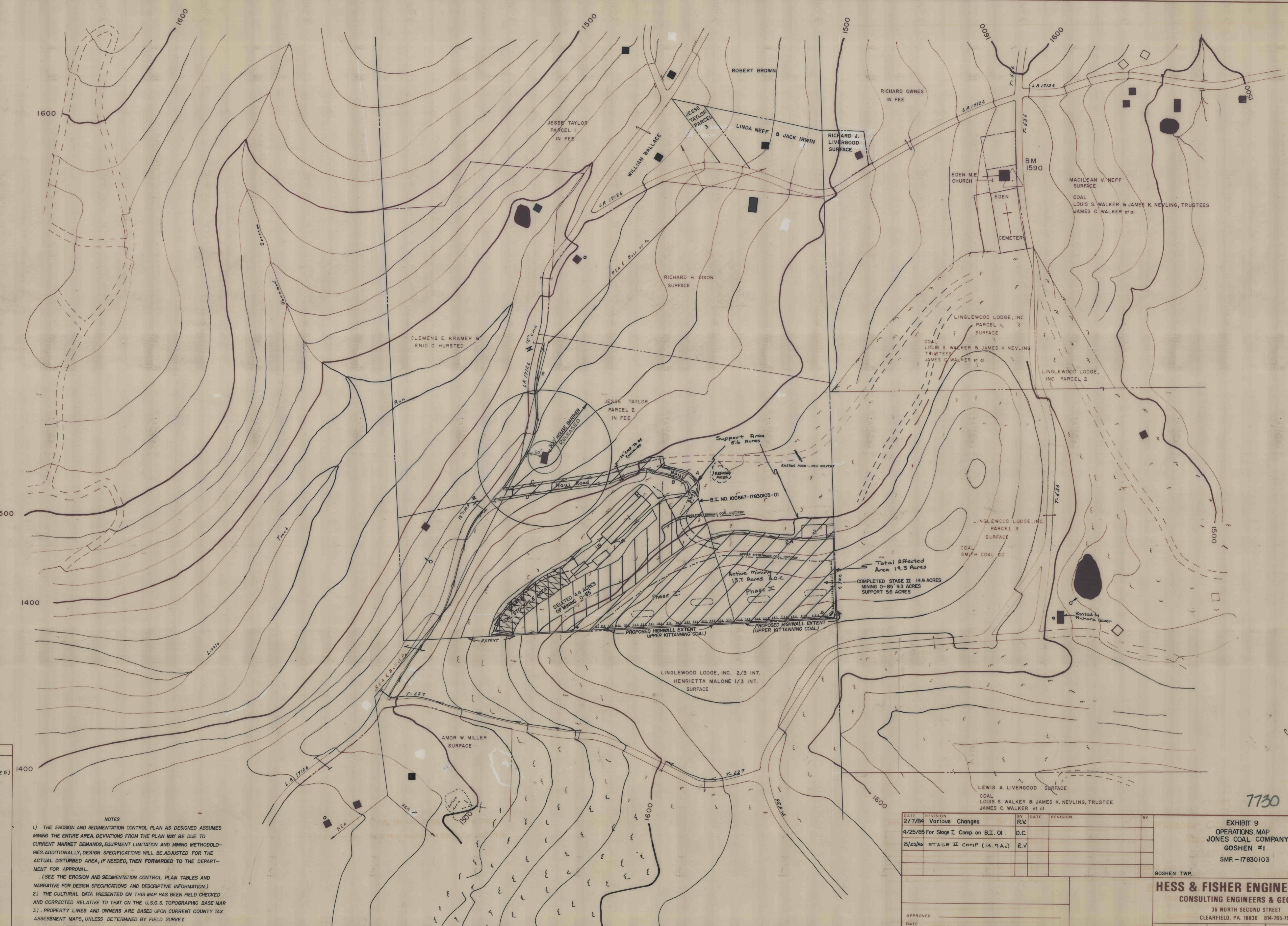


0877



**LEGEND**

[Symbol]	PROPOSED PERMIT AREA
[Symbol]	PROPERTY LINES (KEY TO MODULE 5)
[Symbol]	SURFACE MINED AREAS
[Symbol]	COAL CROPLINES
[Symbol]	MIDDLE KITTANNING
[Symbol]	UPPER KITTANNING
[Symbol]	FINAL HIGHWALL LIMIT
[Symbol]	PHASE I MINING SEQUENCE
[Symbol]	TREATMENT PONDS (TO SCALE)
[Symbol]	SEDIMENT BASINS
[Symbol]	SEDIMENT DITCHES
[Symbol]	DIVERSION DIKES
[Symbol]	SPOIL STORAGE AREA
[Symbol]	TORSOIL STORAGE AREA
[Symbol]	DIVERSION DITCH
[Symbol]	SEDIMENT TRAPS
[Symbol]	ACTIVE MINING AREA
[Symbol]	SUPPORT AREA
[Symbol]	BONDED INCREMENTS
[Symbol]	DELETED AREA
[Symbol]	STAGE II COMPLETION

**NOTES**

1) THE EROSION AND SEDIMENTATION CONTROL PLAN AS DESIGNED ASSUMES MINING THE ENTIRE AREA. DEVIATIONS FROM THE PLAN MAY BE DUE TO CURRENT MARKET DEMANDS, EQUIPMENT LIMITATION AND MINING METHODOLOGIES. ADDITIONALLY, DESIGN SPECIFICATIONS WILL BE ADJUSTED FOR THE ACTUAL DISTURBED AREA, IF NEEDED, THEN FORWARDED TO THE DEPARTMENT FOR APPROVAL.

(SEE THE EROSION AND SEDIMENTATION CONTROL PLAN TABLES AND NARRATIVE FOR DESIGN SPECIFICATIONS AND DESCRIPTIVE INFORMATION.)

2) THE CULTURAL DATA PRESENTED ON THIS MAP HAS BEEN FIELD CHECKED AND CORRECTED RELATIVE TO THAT ON THE U.S.G.S. TOPOGRAPHIC BASE MAP.

3) . PROPERTY LINES AND OWNERS ARE BASED UPON CURRENT COUNTY TAX ASSESSMENT MAPS, UNLESS DETERMINED BY FIELD SURVEY.

DATE	REVISION	BY	DATE	REVISION	BY
2/7/84	Various Changes	R.V.			
4/25/85	For Stage I Comp. on B.I. OI	D.C.			
8/25/84	STAGE II COMP. (14.9A.C.)	R.V.			

APPROVED \_\_\_\_\_ DATE \_\_\_\_\_

APPROVED \_\_\_\_\_ ENGINEER \_\_\_\_\_

REG. NO. \_\_\_\_\_ DATE \_\_\_\_\_

7730

EXHIBIT 9  
OPERATIONS MAP  
JONES COAL COMPANY  
GOSHEN #1  
SMR - 17830103

GOSHEN TWP. CLEARFIELD CO.

**HESS & FISHER ENGINEERS, INC.**  
CONSULTING ENGINEERS & GEOLOGISTS  
36 NORTH SECOND STREET  
CLEARFIELD, PA. 16830 814-765-7541

DRAWN BY: [Signature] DATE: 1/21/83 FILE NO.: M-0205  
CHECKED BY: [Signature] SCALE: 1" = 200' JOB NO.: 8321604  
REG. NO. \_\_\_\_\_ DATE \_\_\_\_\_ SEAL SHEET 2 OF 3 F.B. NO.: 1004, 1007