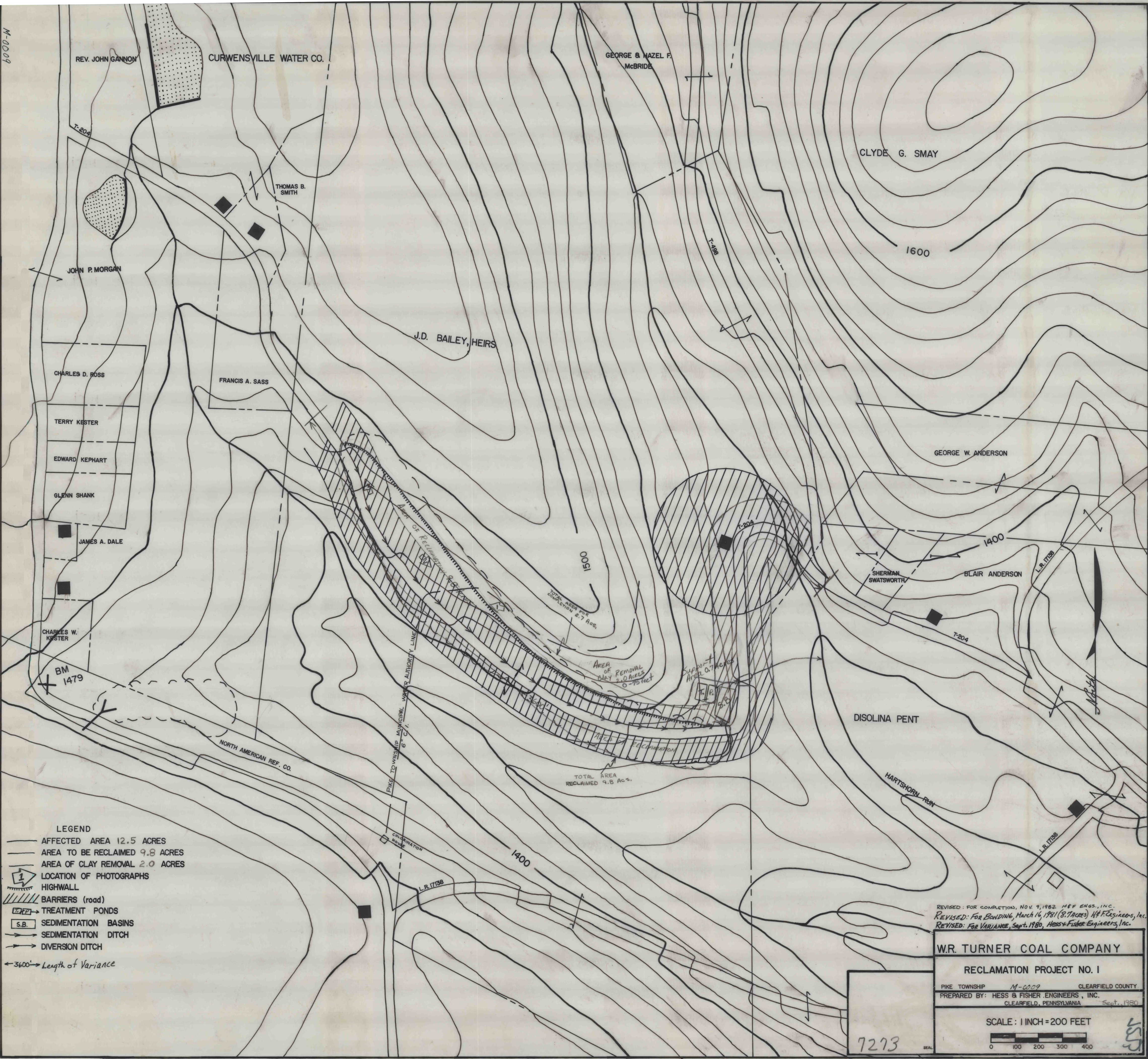


6000-W



REV. JOHN GANNON

CURWENSVILLE WATER CO.

GEORGE & NAZEL F. McBRIDE

CLYDE G. SMAY

THOMAS B. SMITH

JOHN P. MORGAN

J.D. BAILEY, HEIRS

CHARLES D. ROSS

FRANCIS A. SASS

TERRY KESTER

EDWARD KEPHART

GLENN SHANK

JAMES A. DALE

CHARLES W. KESTER

BM 1479

NORTH AMERICAN REF. CO.

PIKE TO WINSHIP MUNICIPAL WATER AUTHORITY LINE

CULMINATION HOUSE

0051

1400

1400

DISOLINA PENT

HARTSHORN RUN

L.R. 17188

L.R. 17188

L.R. 17188

- LEGEND**
- AFFECTED AREA 12.5 ACRES
 - AREA TO BE RECLAIMED 9.8 ACRES
 - AREA OF CLAY REMOVAL 2.0 ACRES
 - [1] LOCATION OF PHOTOGRAPHS
 - HIGHWALL
 - [//] BARRIERS (road)
 - [TWP] TREATMENT PONDS
 - [S.B.] SEDIMENTATION BASINS
 - SEDIMENTATION DITCH
 - DIVERSION DITCH

← 3600' → Length of Variance

TOTAL AREA FOR COMPLETION 2.7 ACS

AREA OF REMOVAL 2.0 ACRES 0-75 feet

SUPPORT AREA 0.7 ACRES

TOTAL AREA RECLAIMED 9.8 ACS

REVISED: FOR COMPLETION, NOV. 9, 1982 H&F ENGS., INC.
REVISED: FOR BONDING, March 16, 1981 (8 Acres) H&F ENGS., INC.
REVISED: FOR VARIANCE, Sept. 1980, Hess & Fisher Engineers, Inc.

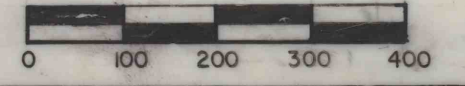
W.R. TURNER COAL COMPANY

RECLAMATION PROJECT NO. 1

PIKE TOWNSHIP M-0009 CLEARFIELD COUNTY

PREPARED BY: HESS & FISHER ENGINEERS, INC. CLEARFIELD, PENNSYLVANIA Sept. 1980

SCALE: 1 INCH = 200 FEET



7273

158