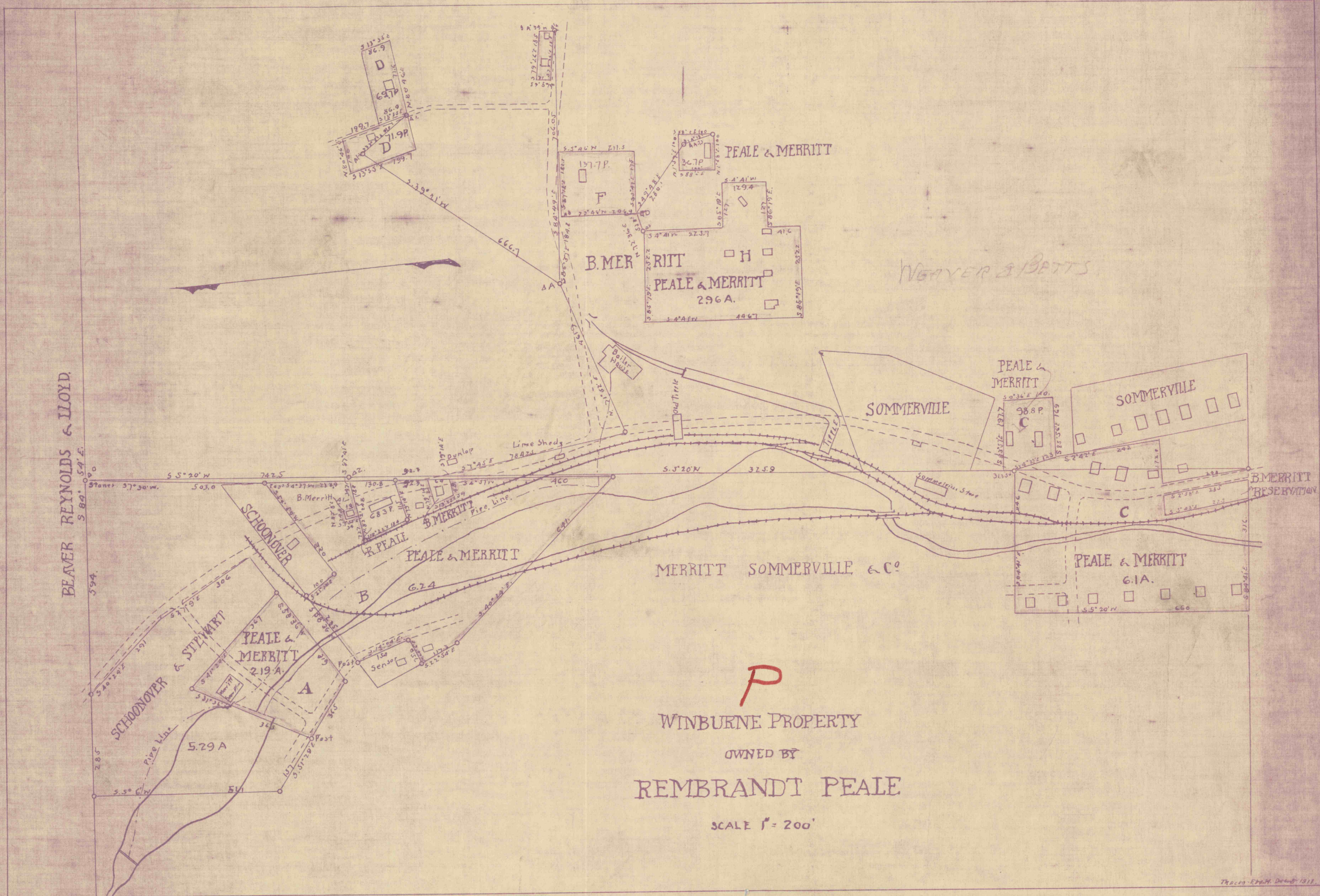


A. 287

6226



P
 WINBURNE PROPERTY
 OWNED BY
 REMBRANDT PEALE
 SCALE 1" = 200'

Deed Book 110.
 Page 6.
 Given by
 BURTON MERRITT ET AL.
 TO
 REMBRANDT PEALE
 18th Dec. 1899.

Traced - E. H. M. Deeds - 1911.