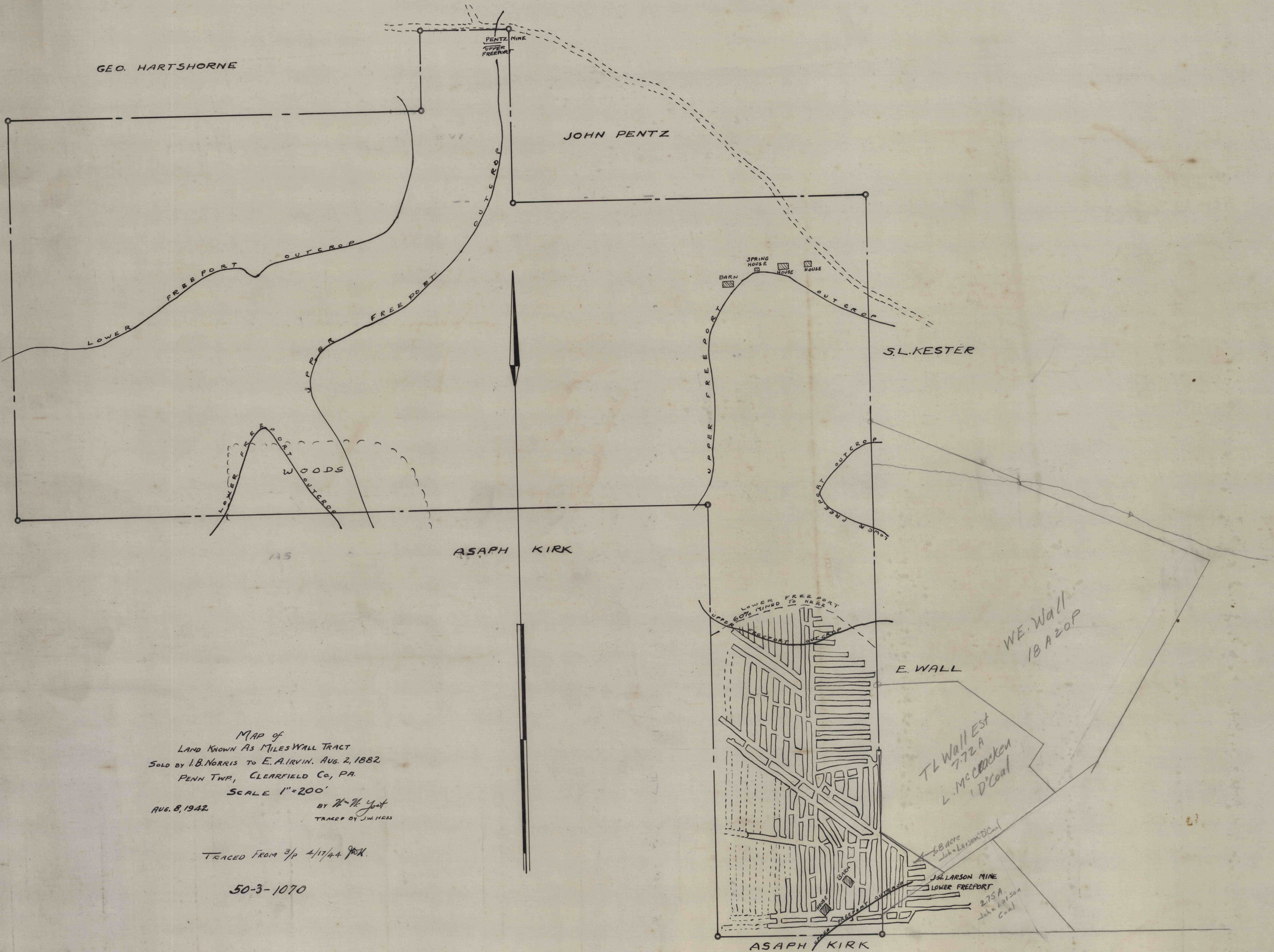


GEO. HARTSHORNE

JOHN PENTZ

S.L. KESTER

ASAPH KIRK



MAP of
 LAND KNOWN AS MILES WALL TRACT
 SOLD BY I.B. NORRIS TO E.A. IRVIN. AUG. 2, 1882.
 PENN TWP., CLEARFIELD CO., PA.
 SCALE 1" = 200'

AUG. 8, 1942

BY *H. H. Galt*
 TRACED BY J.W. HESS

TRACED FROM 3/4" 4/17/44 *JWH*

50-3-1070

TL Wall Est
 7-72A
 L. McCracken
 'D'Coal

J.B. Gere
 John Larson D'Coal

J.W. LARSON MINE
 LOWER FREEPORT
 275A
 John Larson
 Coal

WE Wall
 1820P