

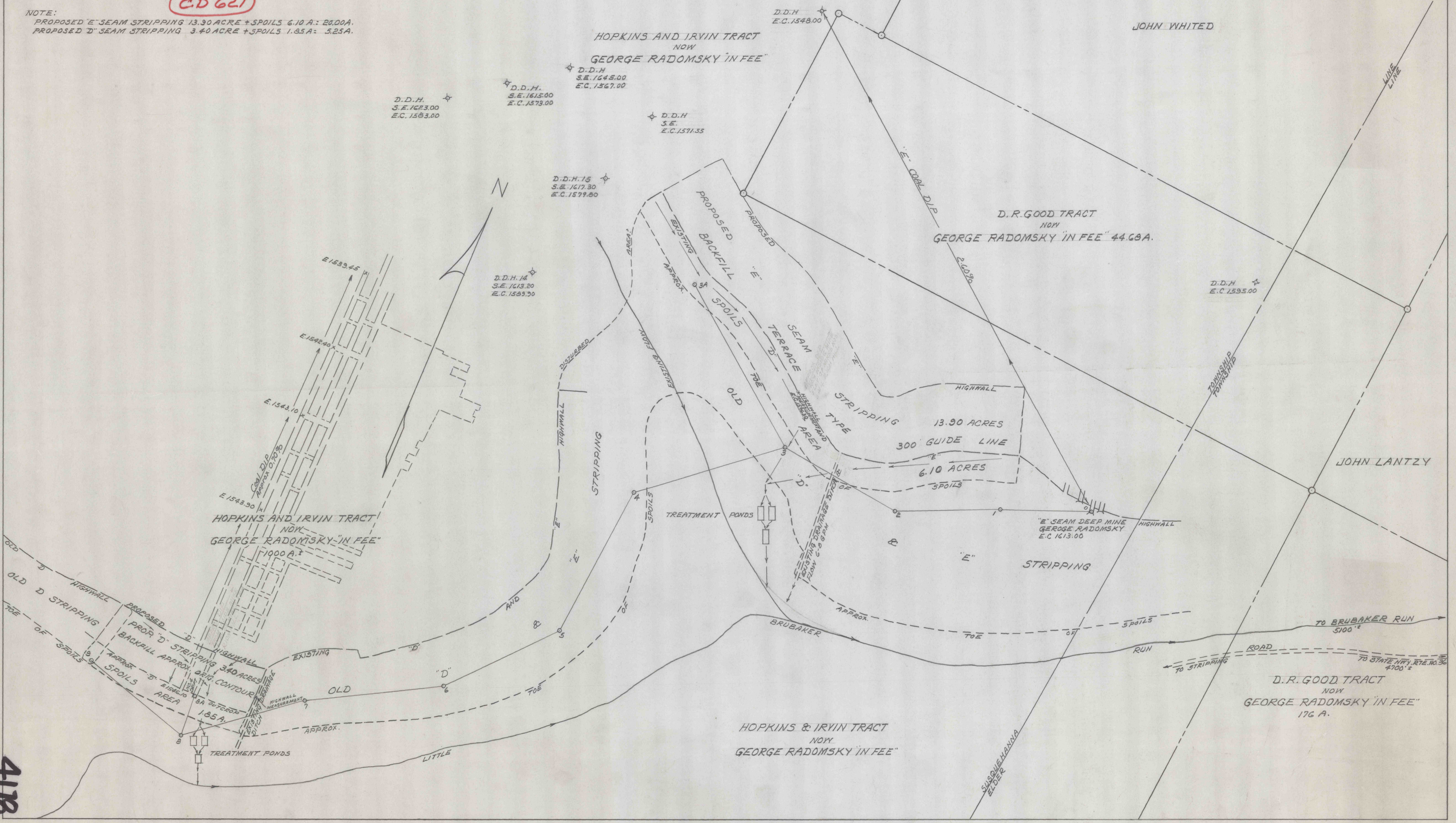
8114

M

PROPERTY MAP PROPOSED "D" & "E" STRIPPINGS  
 OPERATED BY E.P. BENDER TRUCKING  
 SUSQUEHANNA TOWNSHIP CAMBRIA COUNTY, PA.  
 SCALE 1/2" = 200' MAY 6, 1968  
 G.W. CARLSON OF BERNARD LUCAS ASSOC.

CD 627

NOTE:  
 PROPOSED "E" SEAM STRIPPING 13.90 ACRE + SPOILS 6.10 A. = 20.00A.  
 PROPOSED "D" SEAM STRIPPING 3.40 ACRE + SPOILS 1.85A = 5.25A.



418