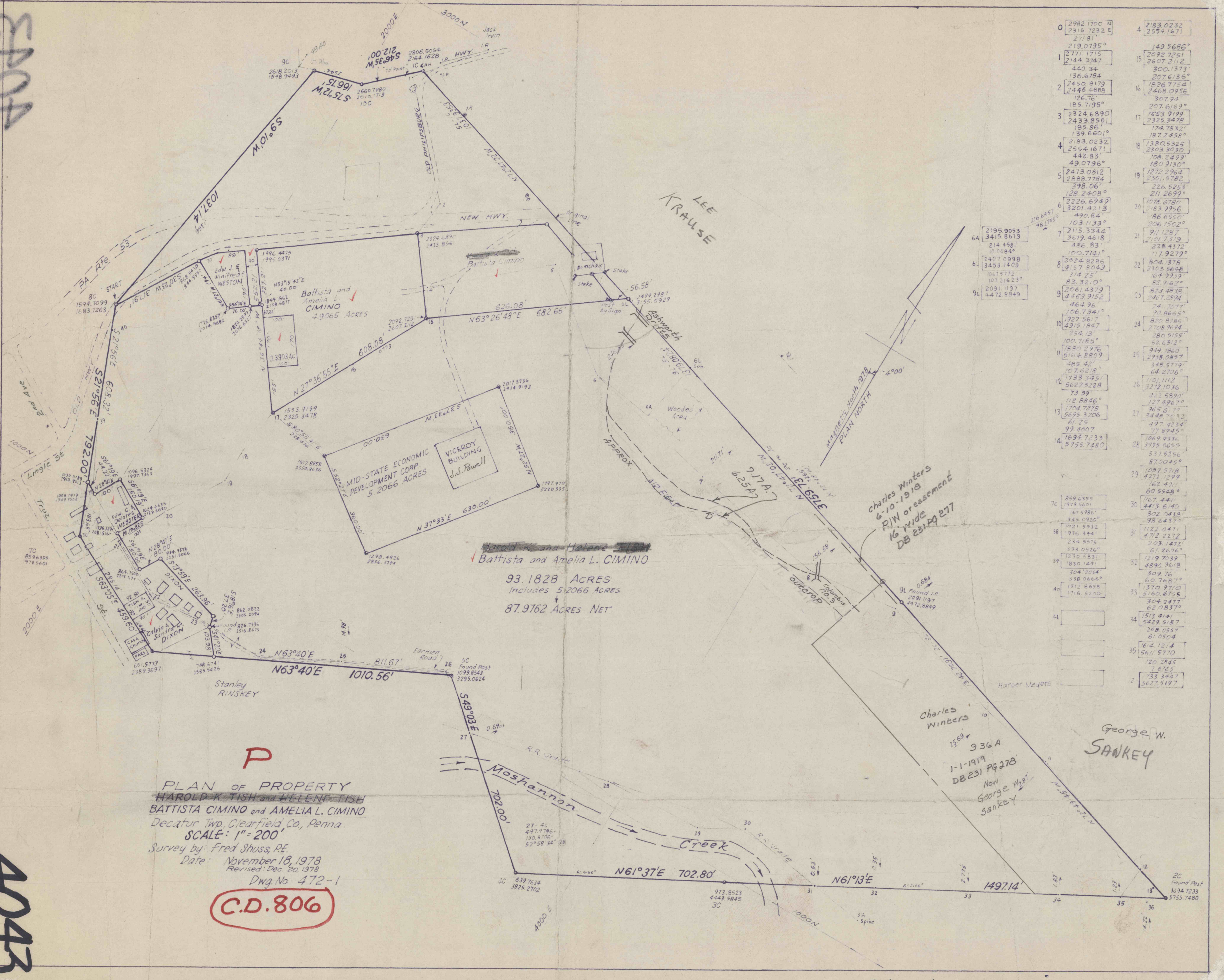


4004



0	2992.1700 N 2315.7232 E 271.81'	4	2183.0232 2554.1671	
1	219.0795° 2771.1715 2144.3747	15	149.5686° 2092.7251 2607.2112	
2	440.34 136.6784 2450.8179 2446.4888	16	300.1373° 207.6136° 1826.7754 2468.0956	
3	126.76' 185.7195° 2324.6890 2433.8561	17	307.94 207.6169° 1553.9199 2325.3478	
4	105.86' 139.6601° 2183.0232 2554.1671	18	174.7832° 187.2458° 108.2499 2303.3030	
5	442.83' 49.0796° 2413.0812 2888.7784	19	180.9130° 226.5263 211.2699° 222.2964	
6	398.06' 128.2408° 2226.6940 3201.4213	20	1078.6780 265.9756 103.1133° 86.6550°	
7	490.84' 103.1133° 2115.3344 3679.4618	21	206.1502° 91.1287° 2151.7319 228.4372	
8	486.83' 100.7141° 2024.8286 457.8049	22	117.9279° 804.378° 2303.5648 164.9939°	
9	314.25' 83.3210° 2061.4379 4469.9152	23	164.9939° 82.9162° 2467.2804 24.7077°	
10	464.96' 106.7341° 1927.5617 4915.7847	24	24.7077° 20.8665° 820.8785 2708.9694	
11	254.13' 100.7185° 1880.2976 5164.8809	25	62.6312° 280.5155° 949.7860 2938.0857	
12	489.42' 107.6218° 1733.3451 5627.5228	26	348.5719° 64.2706° 101.1112 3272.1036	
13	73.59' 112.8846° 1704.7278 5695.3206	27	222.5890° 127.4967° 965.6177 3448.7032	
14	61.25' 99.4007° 1694.7233 5755.7480	28	497.4234° 77.8945° 1069.9336 3938.0655	
15		29	577.5256° 87.0045° 1087.5718 4271.1299	
16		30	162.4711° 60.5548° 167.4411° 4413.6140	
17		31	302.0438° 98.6437° 167.4986° 302.0438°	
18		32	1122.0471° 4712.2272° 1021.9932° 936.4441°	
19		33	203.1472° 61.2676° 234.5575° 333.0526°	
20		34	1219.7039° 4890.3618° 1230.5837° 1830.1491°	
21		35	309.76° 60.7687° 304.2054° 338.0666°	
22		36	370.9710° 5160.6755° 1512.8698° 1716.5200°	
23			304.2477° 62.0837° 1513.4141° 5429.5187°	
24			208.0557° 61.0504° 164.1214° 5611.5770°	
25			120.2845° 7.6165° 733.3447° 5627.5197°	
26				
27				
28				
29				
30				
31				
32				
33				
34				
35				
36				

**P**

PLAN OF PROPERTY  
 HAROLD K. TISH and HELENE TISH  
 BATTISTA CIMINO and AMELIA L. CIMINO  
 Decatur Twp, Clearfield Co, Penna.  
 SCALE: 1" = 200'  
 Survey by: Fred Shuss, P.E.  
 Date: November 18, 1978  
 Revised: Dec. 20, 1978  
 Dwg. No. 472-1

**C.D. 806**

Return to map No 806

4043