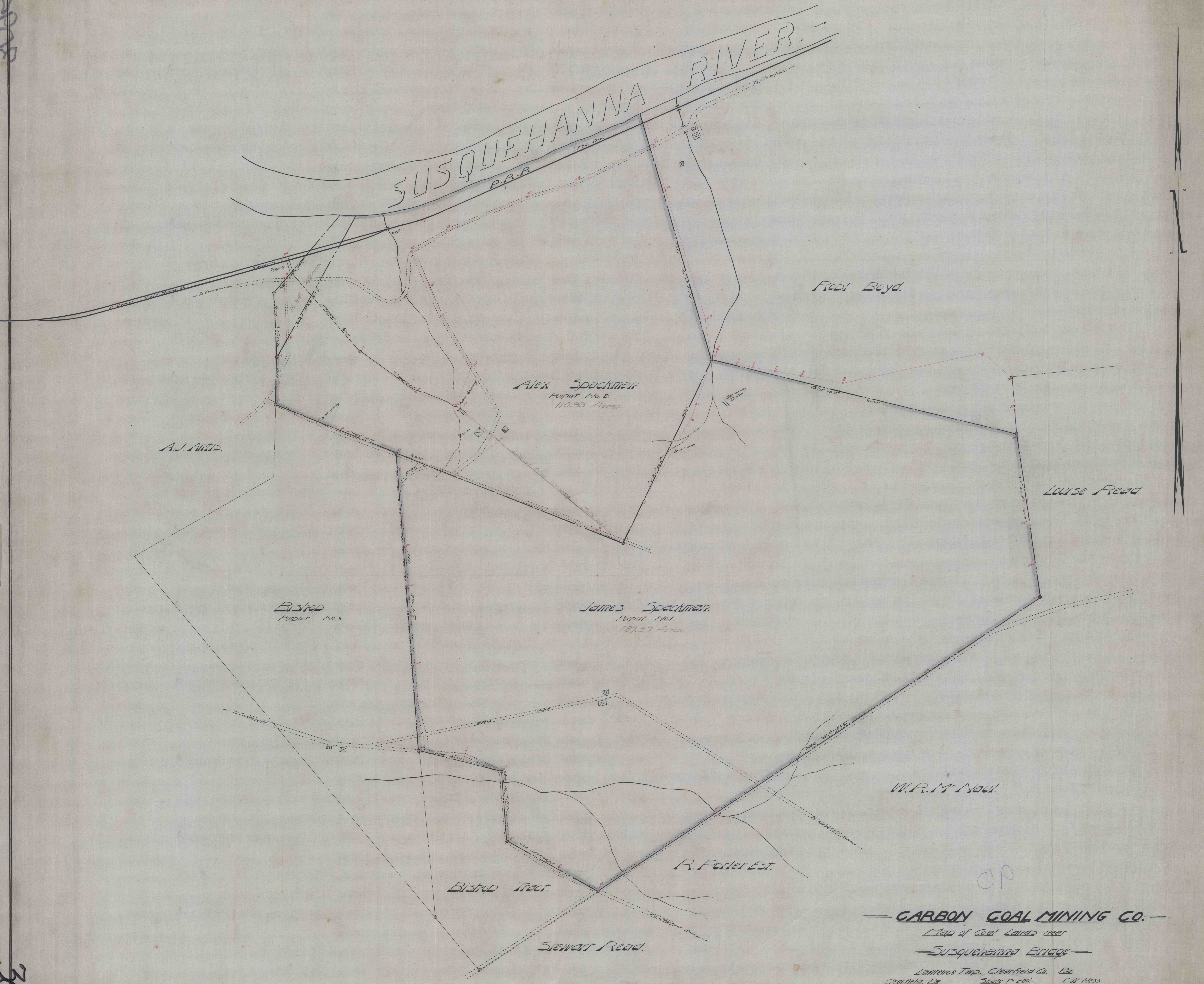


3095

3095



SUSQUEHANNA RIVER.

P.R.R.

Alex Spackman  
 Report No. 2.  
 110.93 Acres

James Spackman.  
 Report No. 1.  
 187.37 Acres

Bishop  
 Report - No. 3.

A.J. Artis.

Robt Boyd.

Louise Reed.

W.R. Mc Naul.

R. Porter Est.

Bishop Tract.

Stewart Road.

**CARBON GOAL MINING CO.**

Map of Coal Lands near

Susquehanna Bridge.

Lawrence Twp. Clearfield Co. Pa.  
 Clearfield, Pa. Scale 1" = 200'  
 May 23, 1909. E.W. Hess, Eng.

OP

787

