

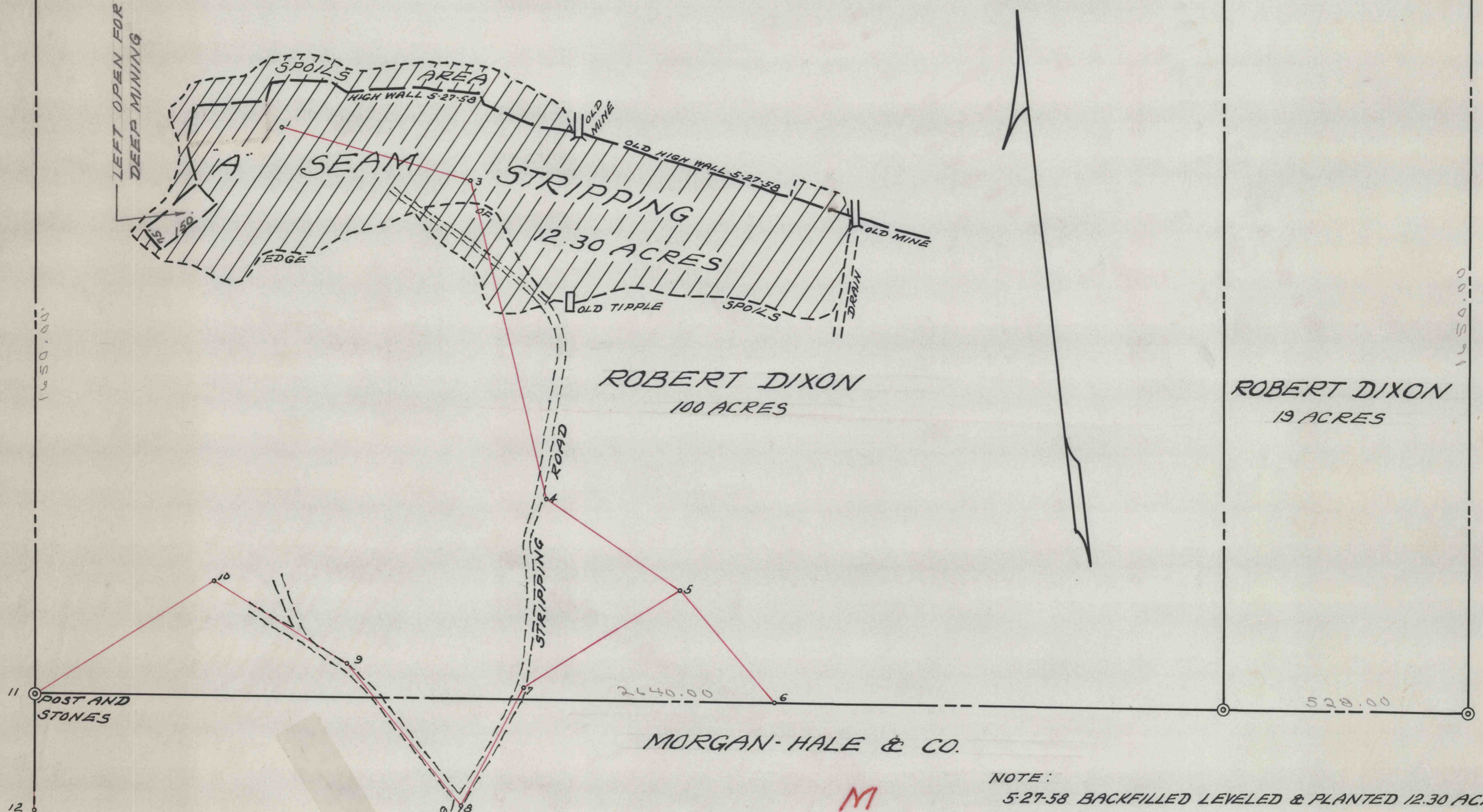
JOHN S. GEARHART

S. C. HAMER

JOHN S. GEARHART

MORGAN-HALE & CO.

2300



MORGAN-HALE & CO.

NOTE:
5-27-58 BACKFILLED LEVELED & PLANTED 12.30 ACRES

— MAP SHOWING "A" SEAM STRIPPING —
 — OPERATED BY THOMPSON COAL COMPANY —
 — BOGGS TWP. CLEARFIELD COUNTY PA. —
 — SCALE 1"=200' — MAY 28, 1958 —
 — BERNARD LUCAS ASSOC. —

C.D. 554R

TO ROUTE NO. 17049
0.50 MILES

5865