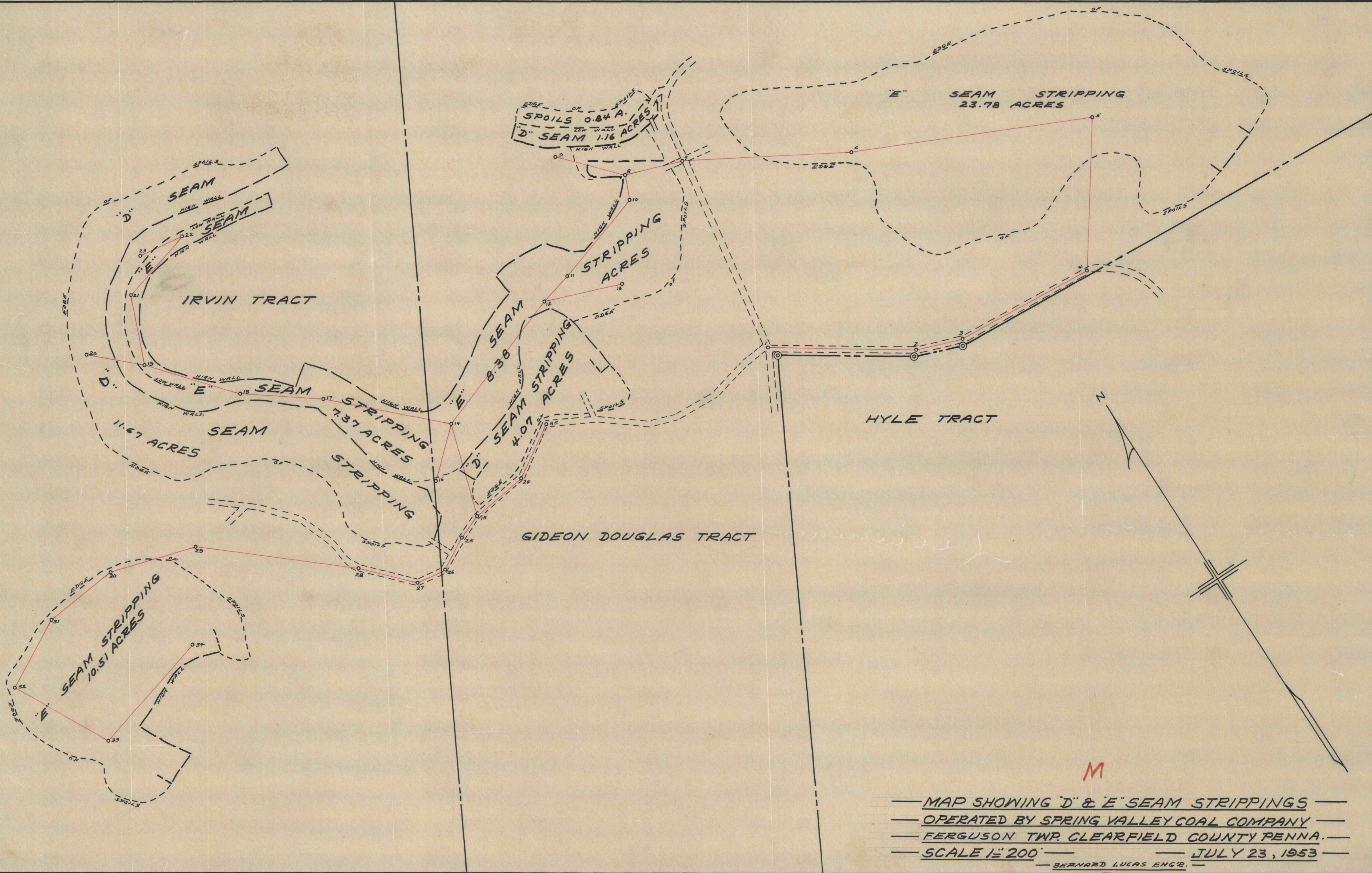


0135

2370



— MAP SHOWING "D" & "E" SEAM STRIPPINGS —  
 — OPERATED BY SPRING VALLEY COAL COMPANY —  
 — FERGUSON TWP. CLEARFIELD COUNTY PENNA. —  
 — SCALE 1" = 200' — JULY 23, 1953 —  
 — BERNARD LUCAS ENGR. —

M

C.D. 378