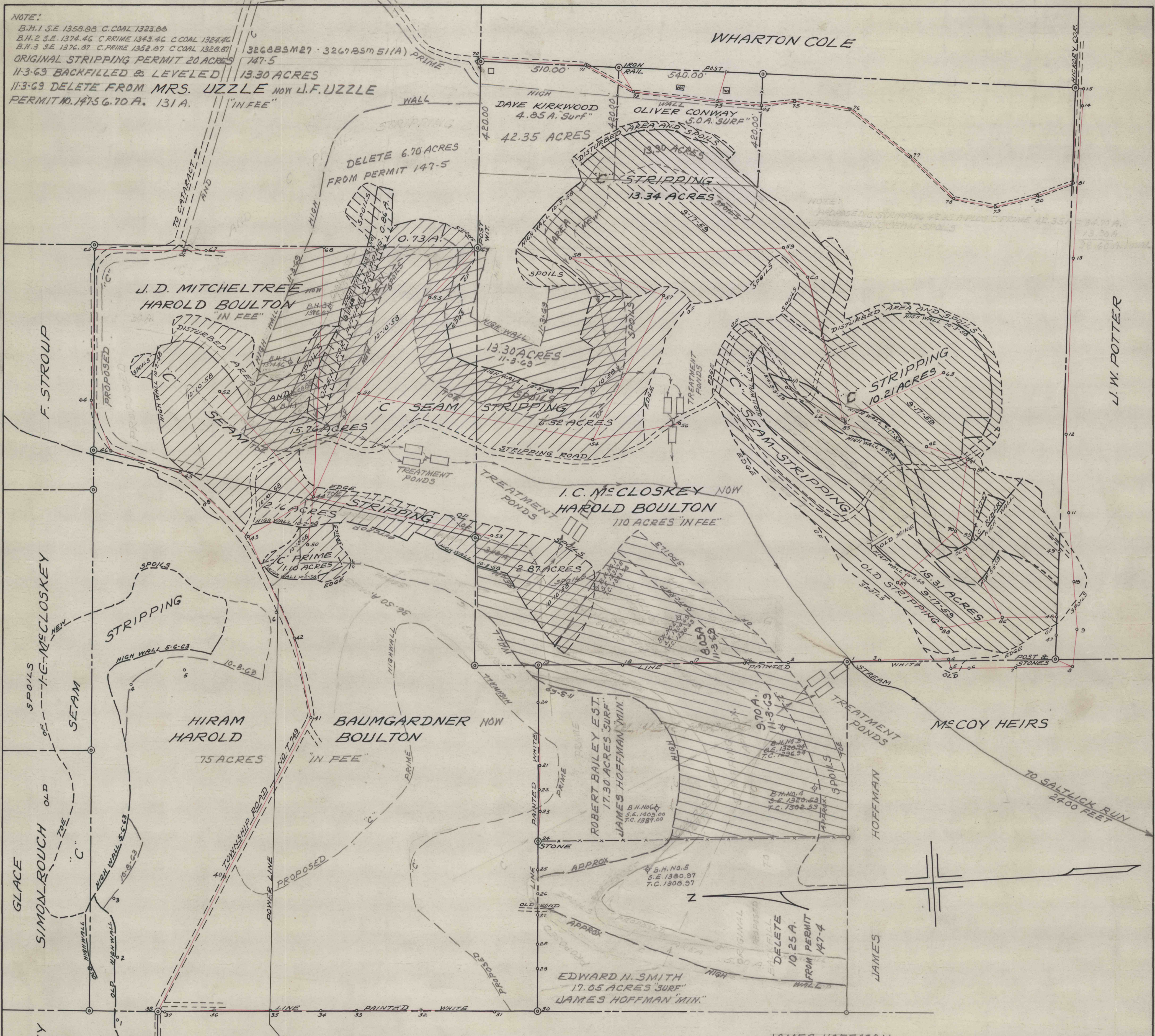


NOTE:  
 B.H.1 S.E. 1358.88 C.COAL 1323.88  
 B.H.2 S.E. 1374.46 C.PRIME 1343.46 C.COAL 1324.46  
 B.H.3 S.E. 1376.87 C.PRIME 1352.87 C.COAL 1328.87  
 ORIGINAL STRIPPING PERMIT 20 ACRES 147-5  
 11-3-69 BACKFILLED & LEVELED 13.30 ACRES  
 11-3-69 DELETE FROM MRS. UZZLE NOW J.F.UZZLE  
 PERMIT NO. 14756.70 A. 131 A. "IN FEE"



NOTE:  
 10-10-58 BACKFILLED & LEVELED 29.87 ACRES  
 9-17-59 BACKFILLED & LEVELED 39.72 ACRES

NOTE:  
 PROPOSED "C" SEAM 63.25 A. PLUS C PRIME 36.50 A. = 99.75 A.  
 PROPOSED "C" SPOILS 7.10 A PLUS C SPOILS 13.90 A. = 21.00 A.  
 TOTAL TO BE EFFECTED 120.75 A. 3267B5M51  
 ORIGINAL PERMIT 28.00 ACRES IN YELLOW 147-4  
 11-3-69 BACKFILLED & LEVELED 17.75 ACRES  
 11-3-69 DELETE FROM PERMIT NO. 147-4 10.25 ACRES  
 — MAP SHOWING "C" & "D" SEAM STRIPPINGS —  
 — OPERATED BY JOHN E. TEETER —  
 — KARTHUS TWP. CLEARFIELD COUNTY PA. —  
 — SCALE 1" = 200' — — OCT. 10, 1958 —  
 — BERNARD LUCAS ASSOC. —

PM

C.D. 553

STATE ROAD  
 TO POTTERSDALE  
 1.60 MILES

2155

2213