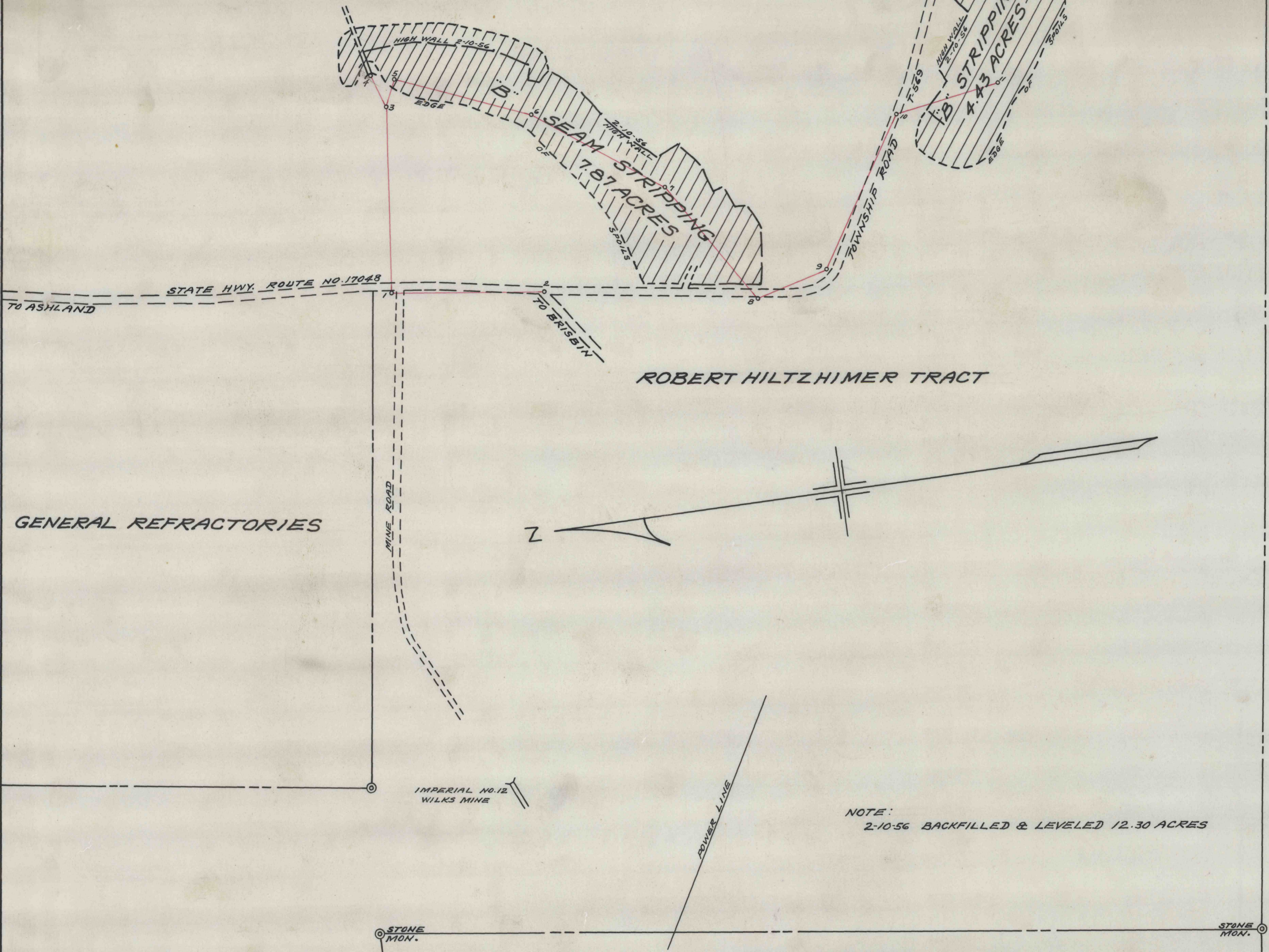


SAMUEL HAMBLETON TRACT



ROBERT HILTZHIMER TRACT

GENERAL REFRACTORIES

JOSEPH MATLOCK TRACT

NOTE:
2-10-56 BACKFILLED & LEVELED 12.30 ACRES

ISAAC BRITTON TRACT

NEVLING BROS.

— MAP SHOWING "B" SEAM STRIPPINGS —
 — OPERATED BY BANNER COAL COMPANY —
 — DECATUR TWP. CLEARFIELD COUNTY PENNA. —
 — SCALE 1" = 200' — FEB. 13, 1956 —
 — BERNARD LUCAS ASSOC. —

C.D. 509

P815

2189