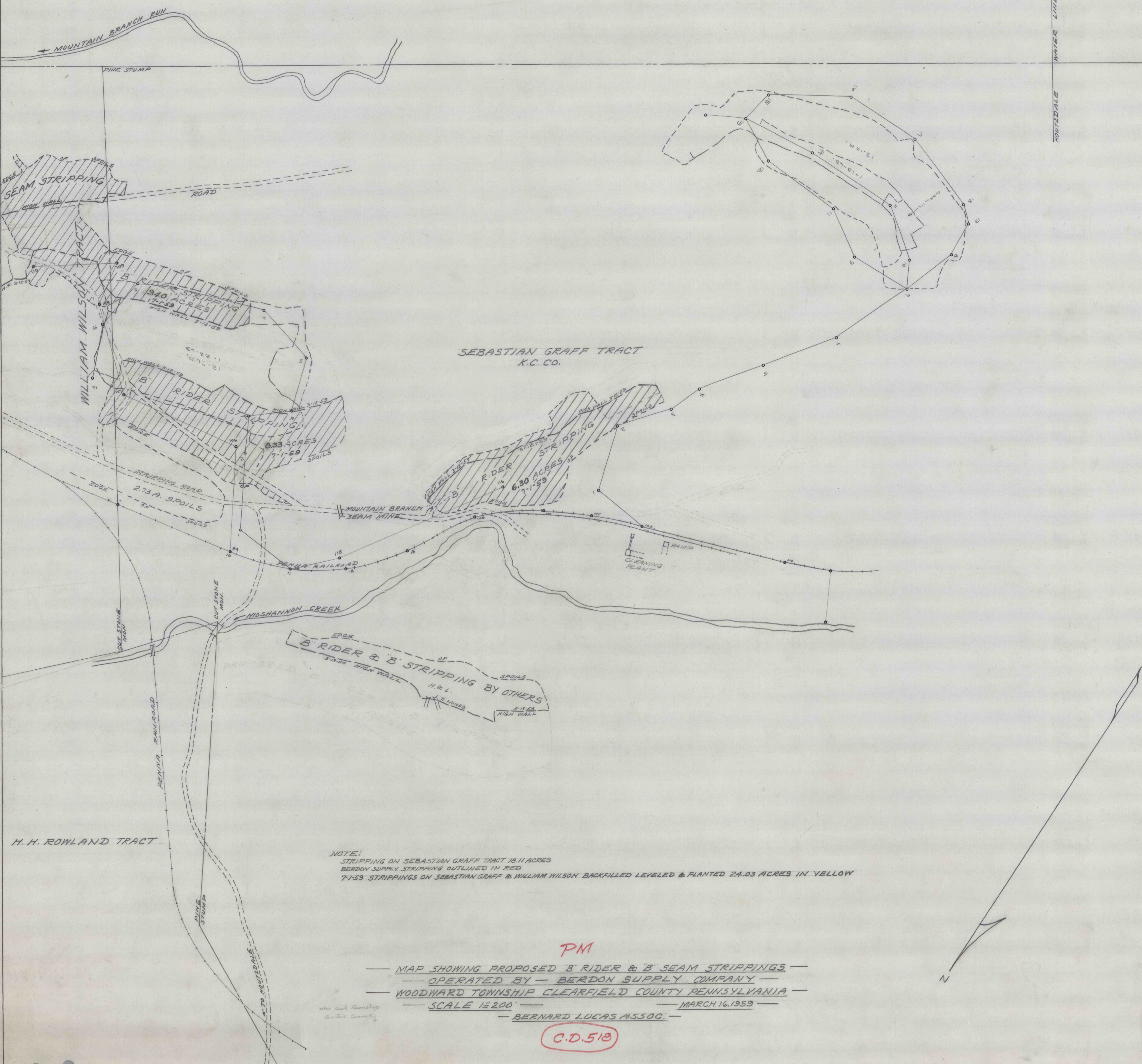


THOMAS REESE TRACT

THOMAS GRANT TRACT
A. L. STINEMAN

JOHN MUSSEY TRACT
K.C. CO.



NOTE:
 STRIPPING ON SEBASTIAN GRAFF TRACT 18.11 ACRES
 BERDON SUPPLY STRIPPING OUTLINED IN RED
 7-1-59 STRIPPINGS ON SEBASTIAN GRAFF & WILLIAM WILSON BACKFILLED LEVELED & PLANTED 24.03 ACRES IN YELLOW

PM

— MAP SHOWING PROPOSED 'B' RIDER & 'B' SEAM STRIPPINGS —
 — OPERATED BY — BERDON SUPPLY COMPANY —
 — WOODWARD TOWNSHIP CLEARFIELD COUNTY PENNSYLVANIA —
 — SCALE 1"=200' — MARCH 16, 1959 —
 — BERNARD LUCAS ASSOC. —

C.D.510