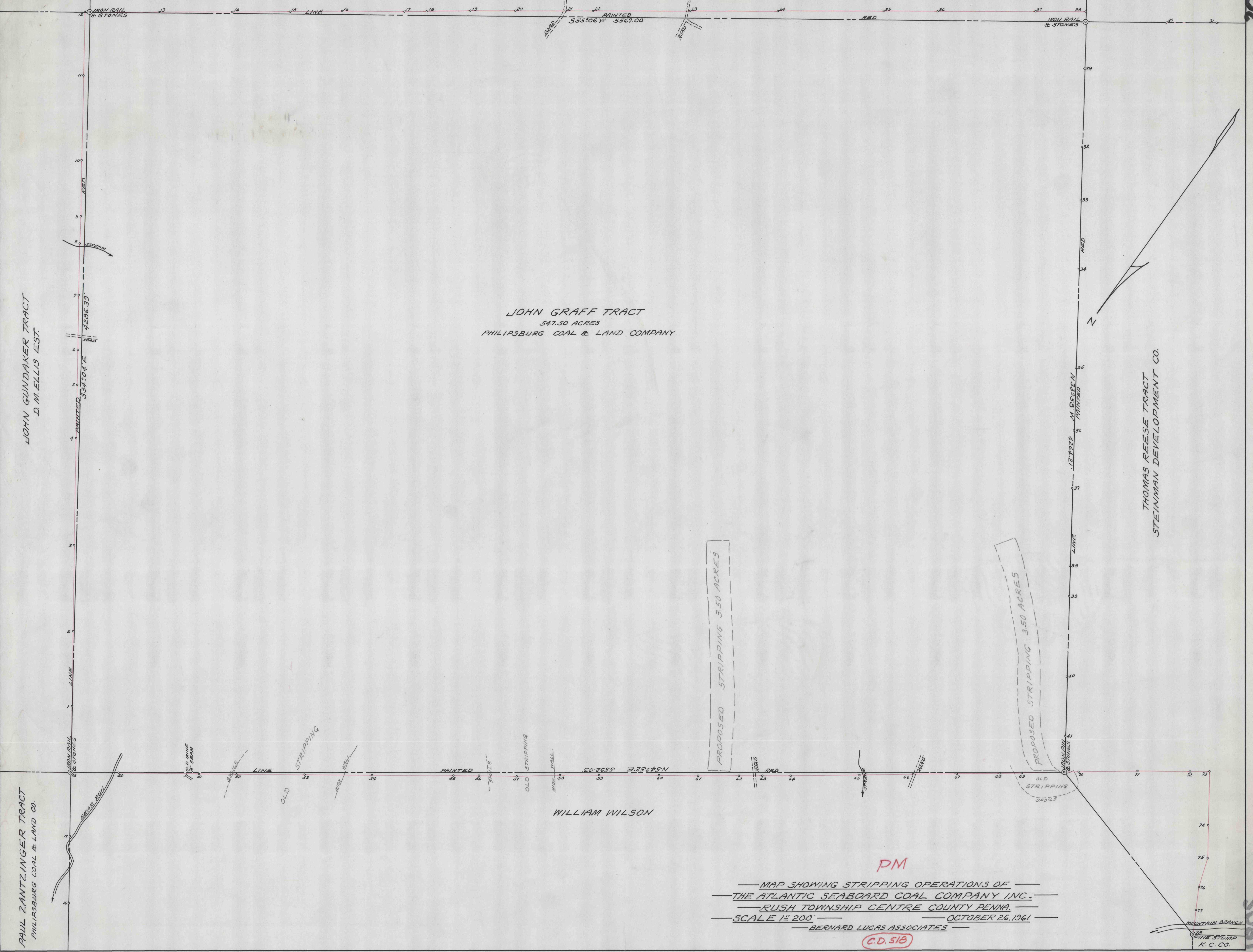


R BRUTSMAN

THOMAS EDWARDS

ROBERT IRVIN

1802



JOHN GUNDAKER TRACT
D. M. ELLIS EST.

JOHN GRAFF TRACT
547.50 ACRES
PHILIPSBURG COAL & LAND COMPANY

THOMAS REESE TRACT
STEINMAN DEVELOPMENT CO.

PAUL ZANTZINGER TRACT
PHILIPSBURG COAL & LAND CO.

WILLIAM WILSON

PM

— MAP SHOWING STRIPPING OPERATIONS OF —
— THE ATLANTIC SEABOARD COAL COMPANY INC. —
— RUSH TOWNSHIP CENTRE COUNTY PENNA. —
— SCALE 1" = 200' — OCTOBER 26, 1961 —
— BERNARD LUCAS ASSOCIATES —

(C.D. 518)

5081