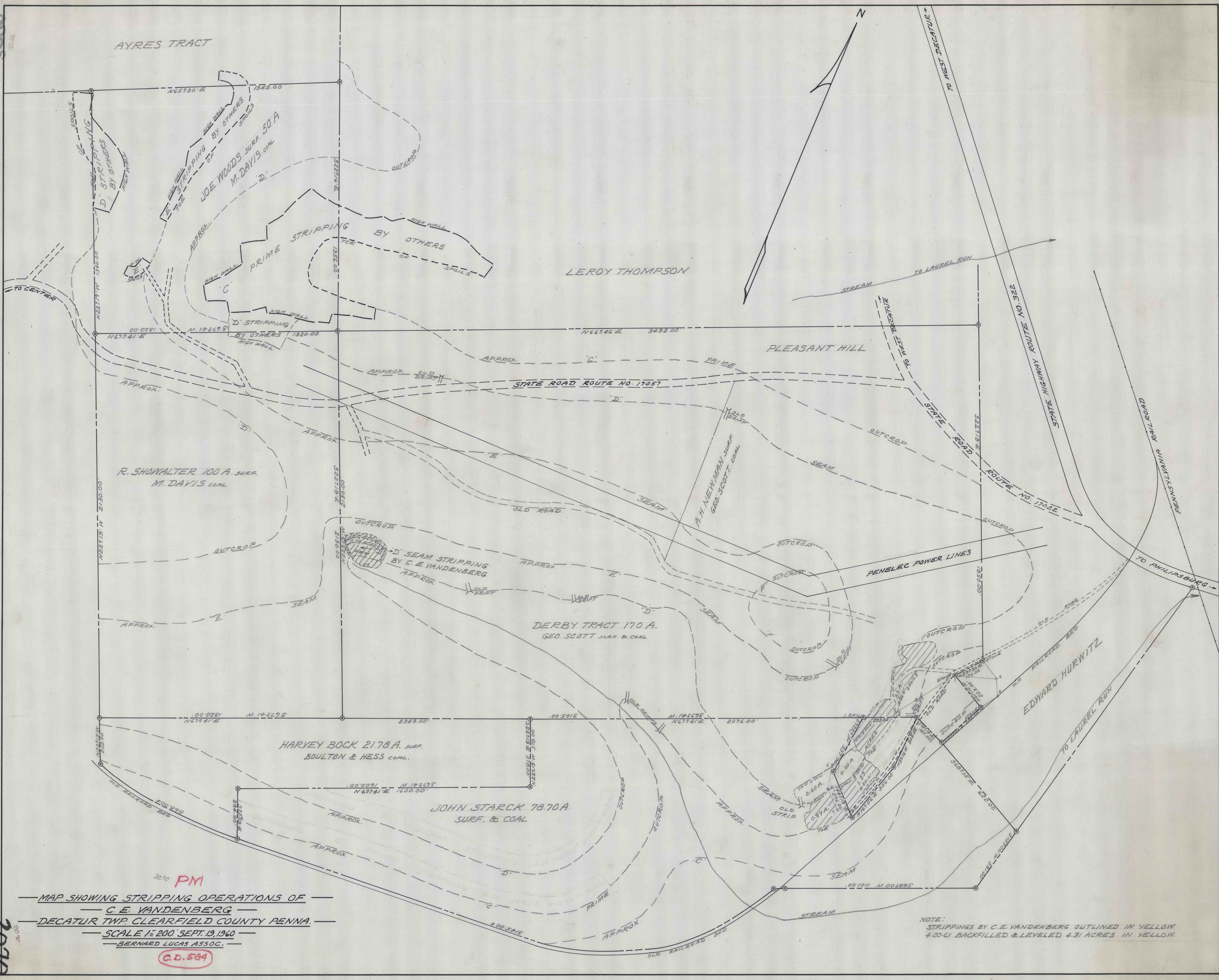


0105

2070



2070 PM

MAP SHOWING STRIPPING OPERATIONS OF
 C. E. VANDENBERG
 DECATUR TWP. CLEARFIELD COUNTY PENNA.
 SCALE 1" = 200' SEPT. 13, 1960
 BERNARD LUCAS ASSOC.

C.D. 584

NOTE:
 STRIPPINGS BY C. E. VANDENBERG OUTLINED IN YELLOW
 4.20-GI BACKFILLED & LEVELED 4.31 ACRES IN YELLOW