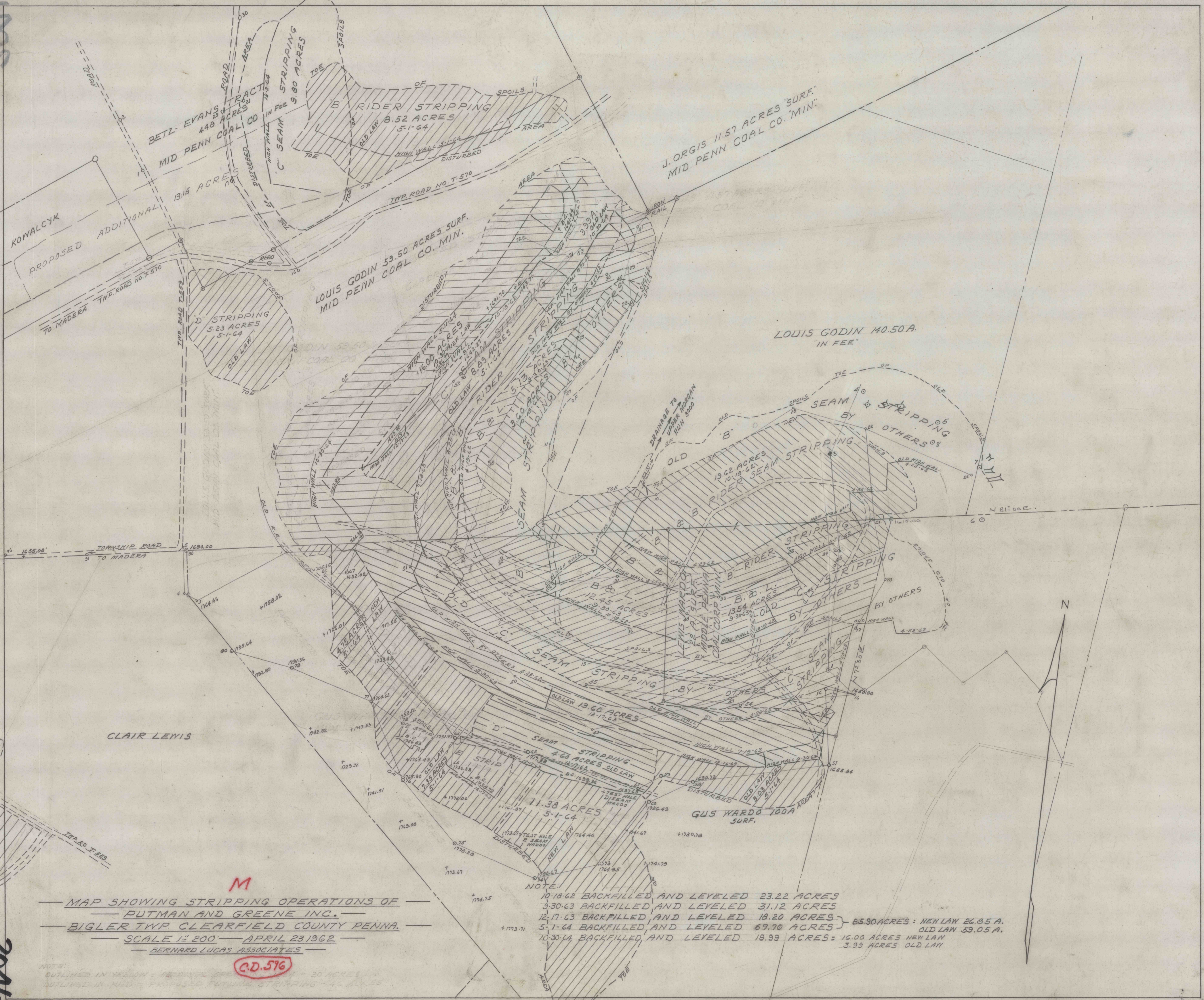


5705

2046



MAP SHOWING STRIPPING OPERATIONS OF  
 PUTMAN AND GREENE INC.  
 BIGLER TWP CLEARFIELD COUNTY PENNA.  
 SCALE 1" = 200' APRIL 23 1962  
 BERNARD LUCAS ASSOCIATES

NOTE:  
 10-18-62 BACKFILLED AND LEVELED 23.22 ACRES  
 3-30-63 BACKFILLED AND LEVELED 31.12 ACRES  
 12-17-63 BACKFILLED AND LEVELED 18.20 ACRES } 85.90 ACRES: NEW LAW 26.85 A.  
 5-1-64 BACKFILLED AND LEVELED 67.70 ACRES } OLD LAW 59.05 A.  
 10-30-64 BACKFILLED AND LEVELED 19.99 ACRES = 16.00 ACRES NEW LAW  
 3.99 ACRES OLD LAW

M

C.D. 576

NOTE:  
 OUTLINED IN YELLOW - FEDERAL RESERVE - 20 ACRES  
 OUTLINED IN RED - FUTURE STRIPPING - 46 ACRES