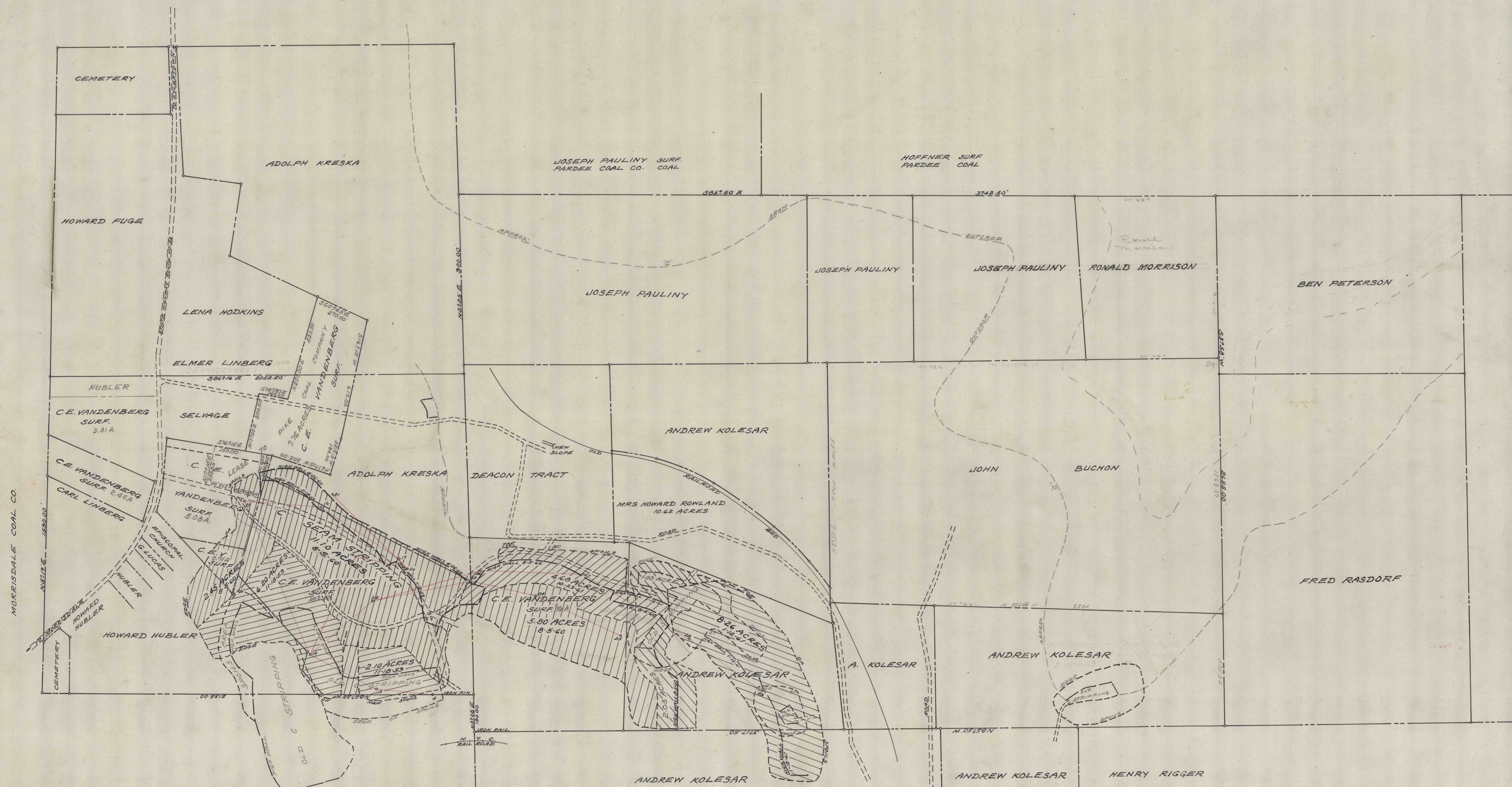


SCALE 1"=200'
MAY 14, 1965



HOWARD HUBLER SURF.
MORRISDALE COAL CO. COAL

NOTE:
 11-18-59 BACKFILLED LEVELED & PLANTED 8.30 ACRES
 8-5-60 BACKFILLED LEVELED 13.05 ACRES
 1-12-61 BACKFILLED LEVELED 8.26 ACRES
 10-23-61 BACKFILLED LEVELED 4.68 ACRES

MAP SHOWING STRIPPING OPERATIONS OF
 C.E. VANDENBERG COAL COMPANY
 MORRIS TWP. CLEARFIELD COUNTY PENNA.
 SCALE 1"=200' SEPT. 2, 1959
 BERNARD LUCAS ASSOC.

C.D. 473

NOTE: OUTLINED IN YELLOW D.L. SCHOONOVER ESTATE "COAL"

4281