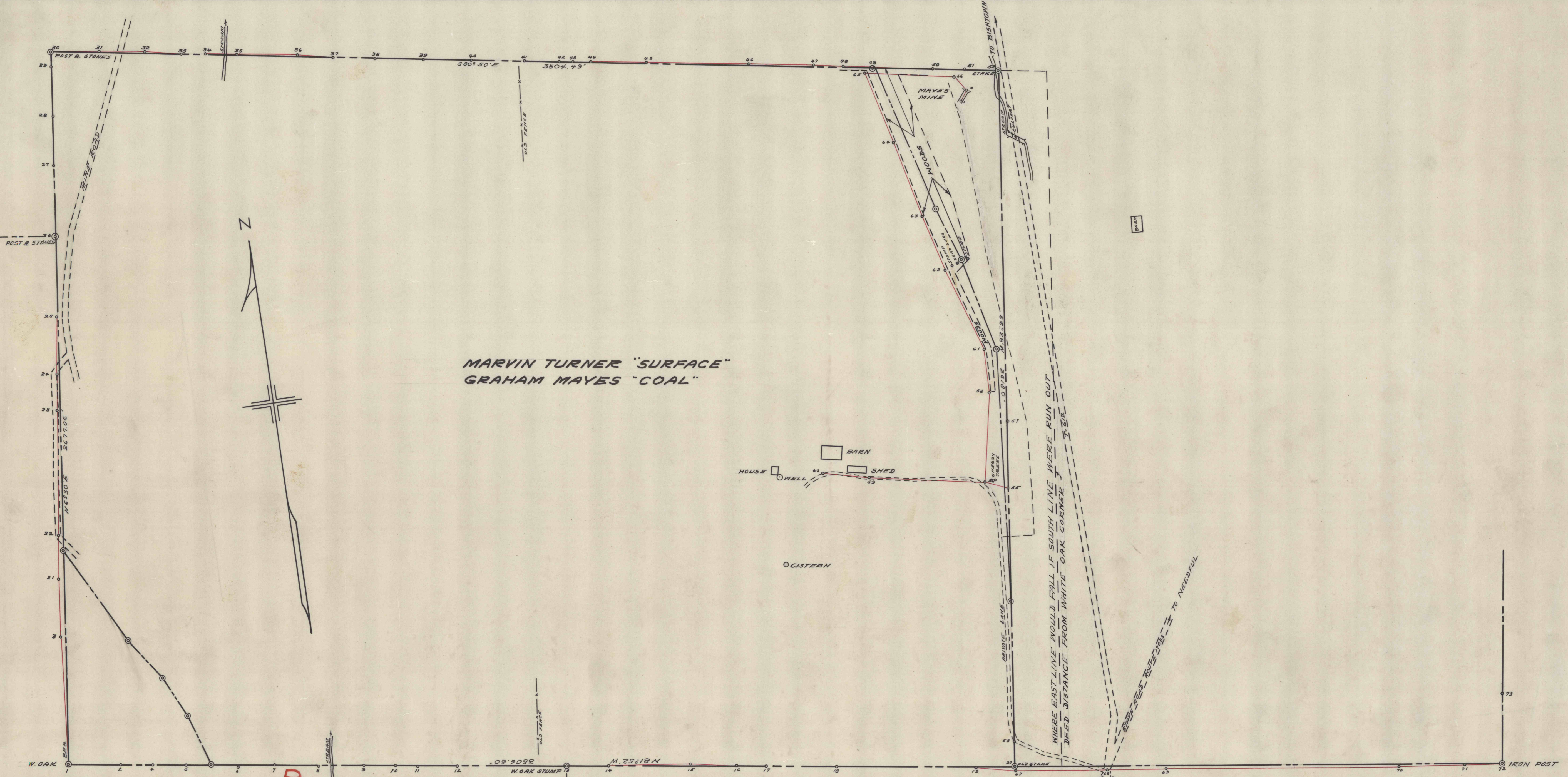


1220

1590



MARVIN TURNER "SURFACE"  
 GRAHAM MAYES "COAL"

-MAP SHOWING SURFACE RIGHTS OF MARVIN TURNER-  
 -AND MINERAL RIGHTS OF GRAHAM MAYES-  
 -BRADFORD TOWNSHIP CLEARFIELD COUNTY PENNA-  
 -SCALE 1"=200'- C.D. 361 - FEB. 22, 1952 -  
 -BERNARD LUCAS ENGR.-