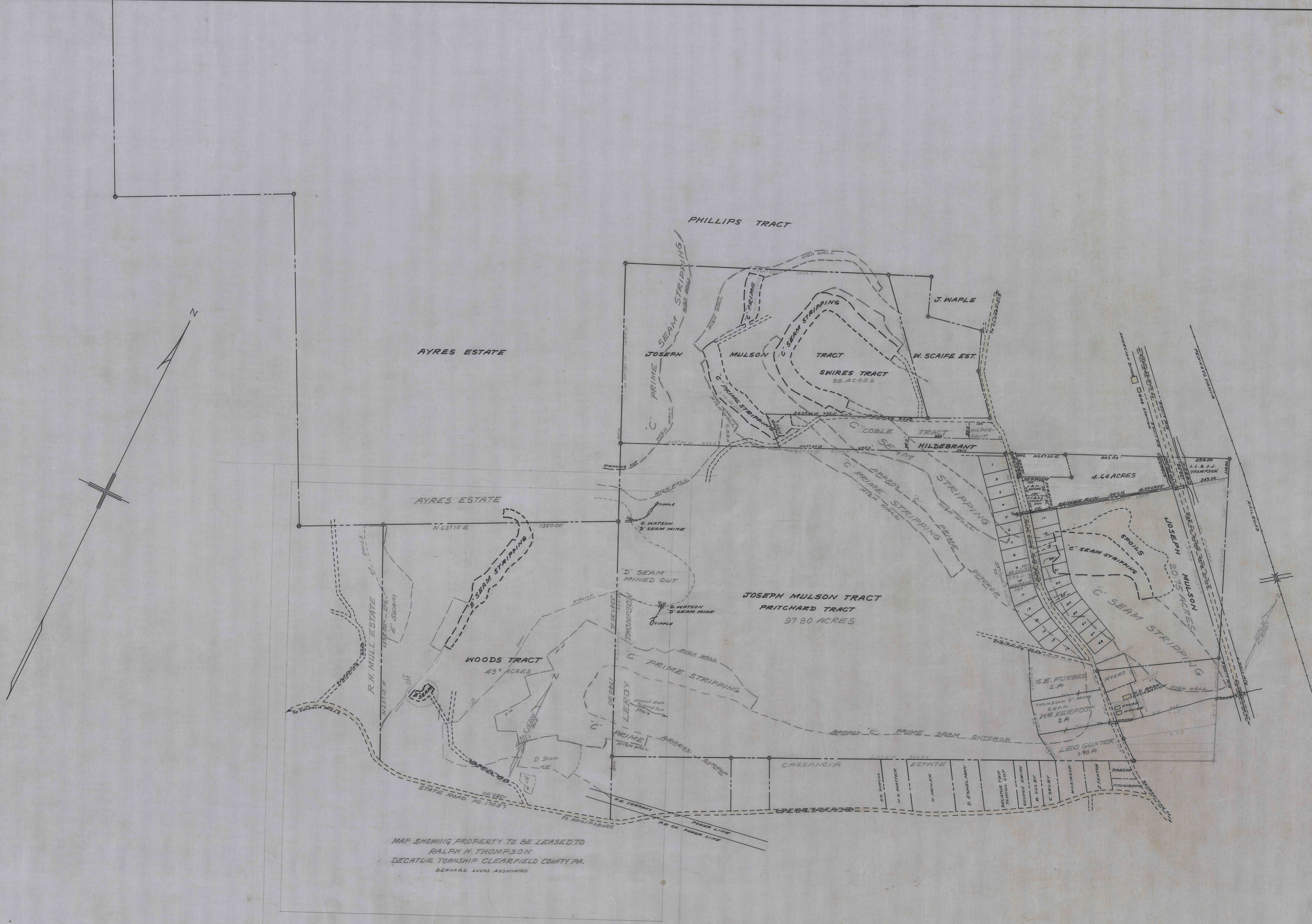


PPA



MAP SHOWING PROPERTY TO BE LEASED TO  
 RALPH H. THOMPSON  
 DECATUR TOWNSHIP CLEARFIELD COUNTY PA.  
 BERNARD LUCAS ASSOCIATES

PM

— MAP SHOWING PROPERTY OF —  
 — JOSEPH MULSON —  
 — DECATUR TWP CLEARFIELD CO. PA. —  
 — SCALE 1" = 200' — — OCT. 9, 1951 —

NOTE:  
 NOW OWNED BY LEROY THOMPSON

C.D. 343 & 370 — BERNARD LUCAS ENGR. — ADDITIONS NOV. 7, 1951  
 REVISED NOV. 16, 1954

1490