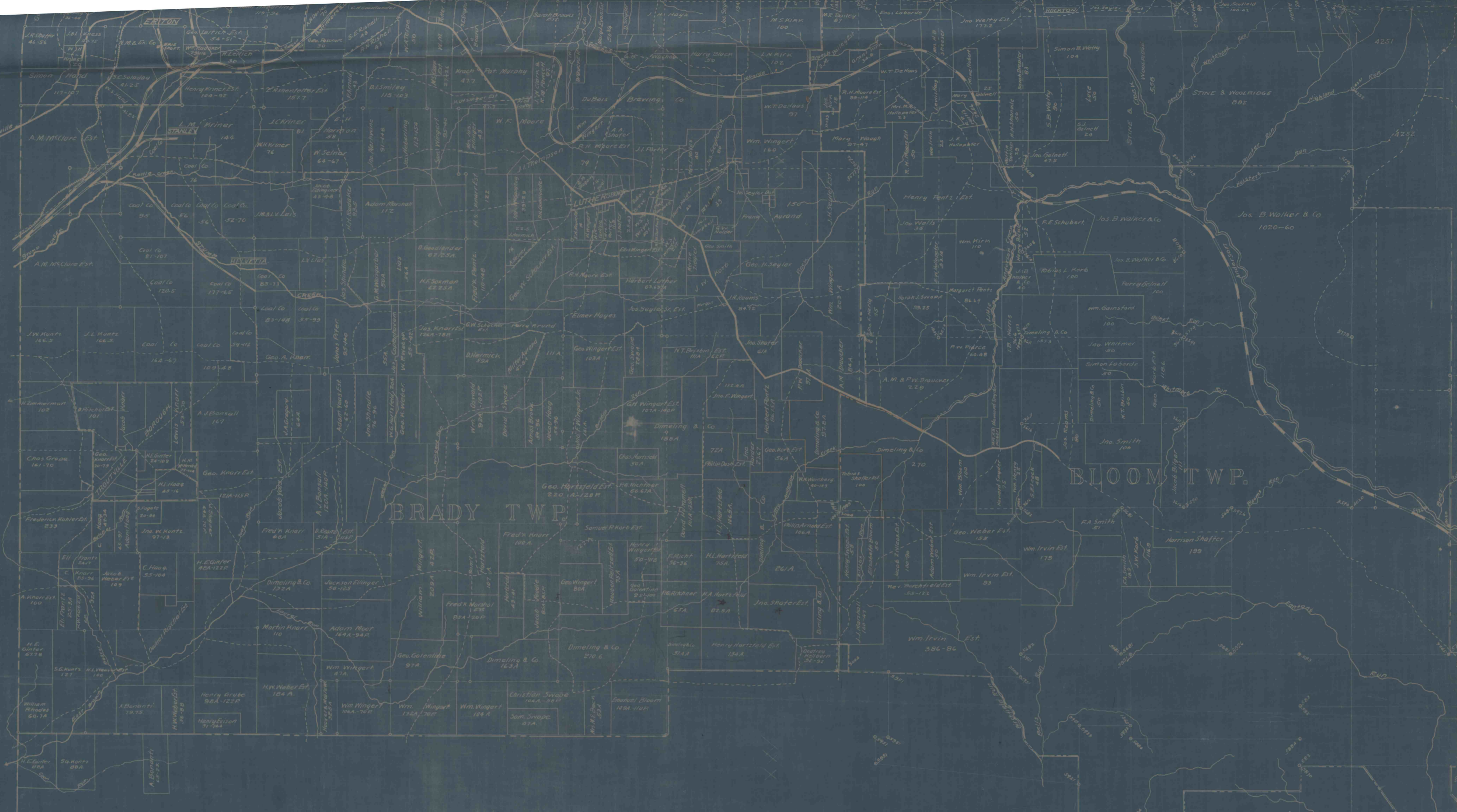


JEFFERSON COUNTY



BELL TWP.

PENN TWP.

P
MAP
OF THE
NORTHWESTERN PART
OF
CLEARFIELD COUNTY,
PENNA.

SCALE: 1"=100 RODS.

FILE-1476-SHEET-1

OFFICE OF
E. VV. HESS,
REG. ENGR. & LAND SURVEYOR,
DUBOIS, PA.
MADE BY
O. P. HESS, REG. ENGR. & L.S.

REVISED TO
JUNE 8, 1925
OCT. 15, 1925
OCT. 31, 1925
MARCH 12, 1926
MARCH 22, 1926
/-22-3/

BELLEVILLE
CHEVY

Handwritten signature

Sheet 1
1476