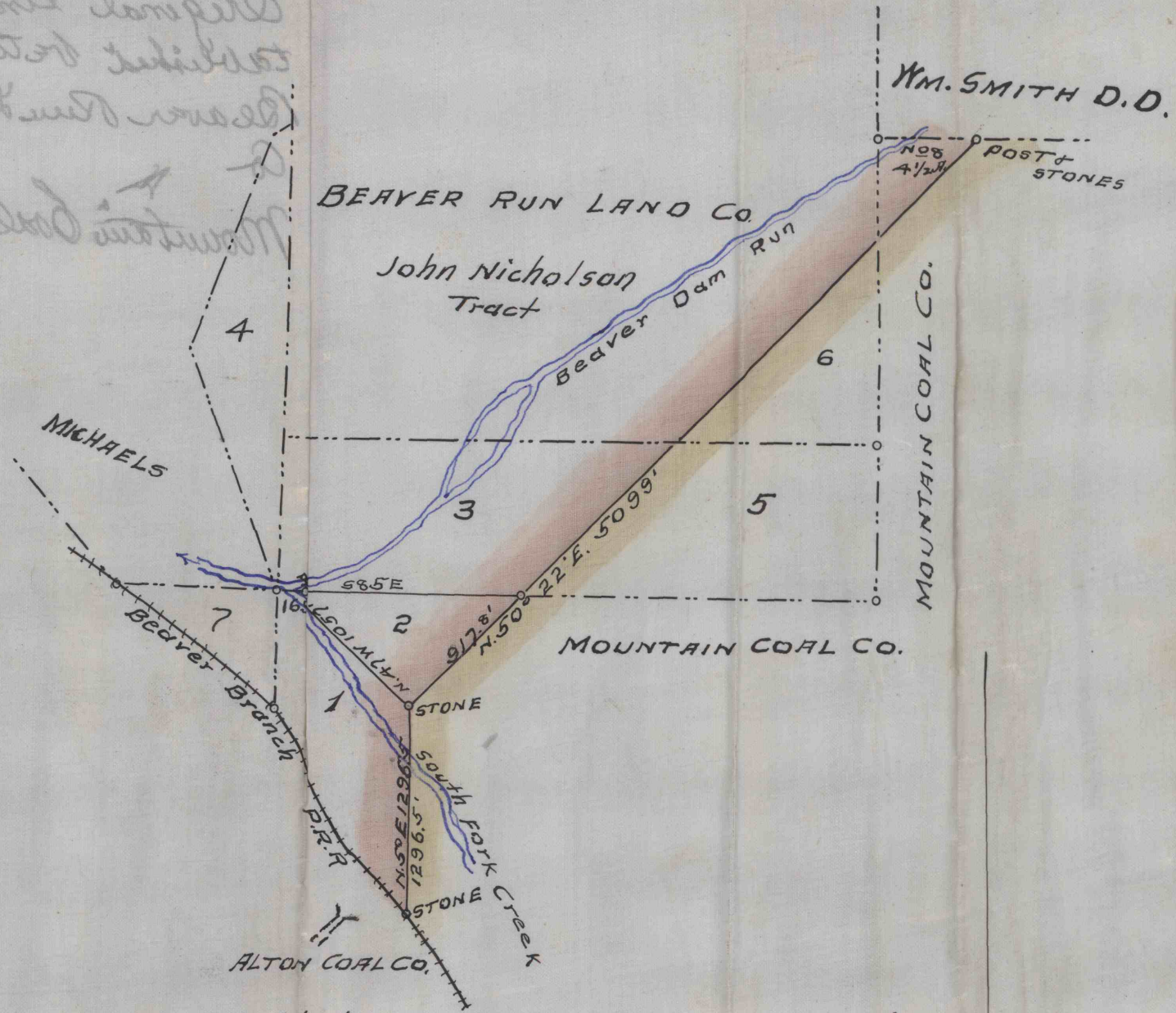


*Original lines  
 established between  
 Beaver Run Land Co  
 &  
 Mountain Coal Co.*



Draft showing lines established between The Mountain Coal Co.  
 and The Beaver Run Land Co, in Cambrid County, on  
 the 14<sup>th</sup> day of August 1900 -

*J. Luden Henry* } Surveyors