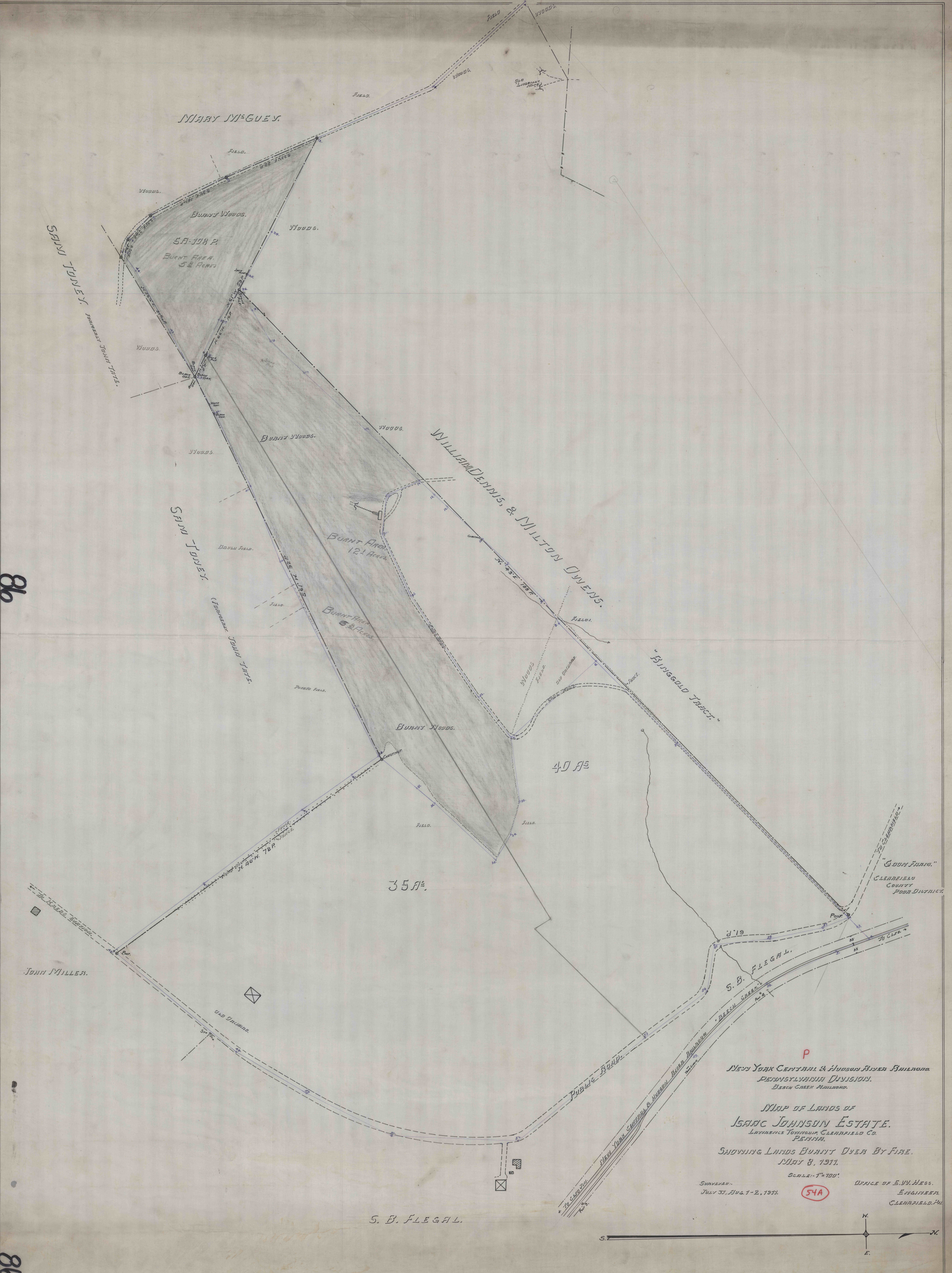


86

86



MAP OF LANDS OF  
 ISAAC JOHNSON ESTATE  
 LAWRENCE TOWNSHIP CLEARFIELD CO.  
 PENNSA.

SHOWING LANDS BURNT OVER BY FIRE  
 MAY 8, 1911.

SCALE: 1" = 100'  
 SURVEYED  
 JULY 31, AUG. 1-2, 1911. OFFICE OF E. W. HESS,  
 ENGINEER,  
 CLEARFIELD, PA.

S. B. FLEGAL.

574