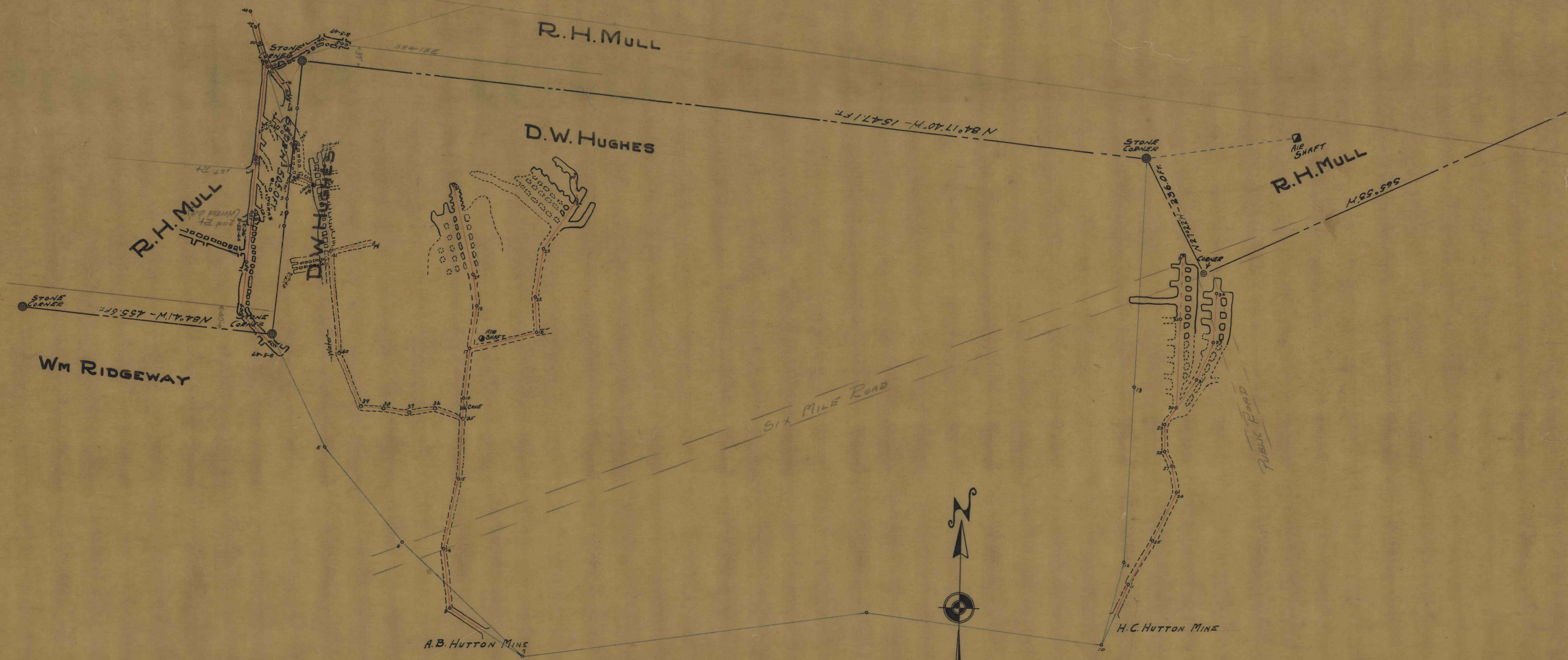


854



D
MAP
 SHOWING EXTREME WORKING FACES
 IN THE "E" VEIN OF THE
 A.B. HUTTON MINE AND H.E. HUTTON MINE
 ON THE
 D.W. HUGHES TRACT
 DECATUR TWP. CLAY CO. PENNA.
 SCALE 1" = 100 FEET
 SURVEYED FOR MIN. TREASURY
 MARCH 26, 1937 OFFICE OF E. H. HESS, ENGR.
 CLEVELAND, PENNA. J. H. YOST, ASST. ENGR.

RESURVEYED MAR. 19, 1941 BY J. H. YOST, REG. SUR. #5173
 RESURVEYED BY ENGINEERING OFFICES OF
 YOST, BROMFIELD & HESS - MARCH 22, 1944

1201