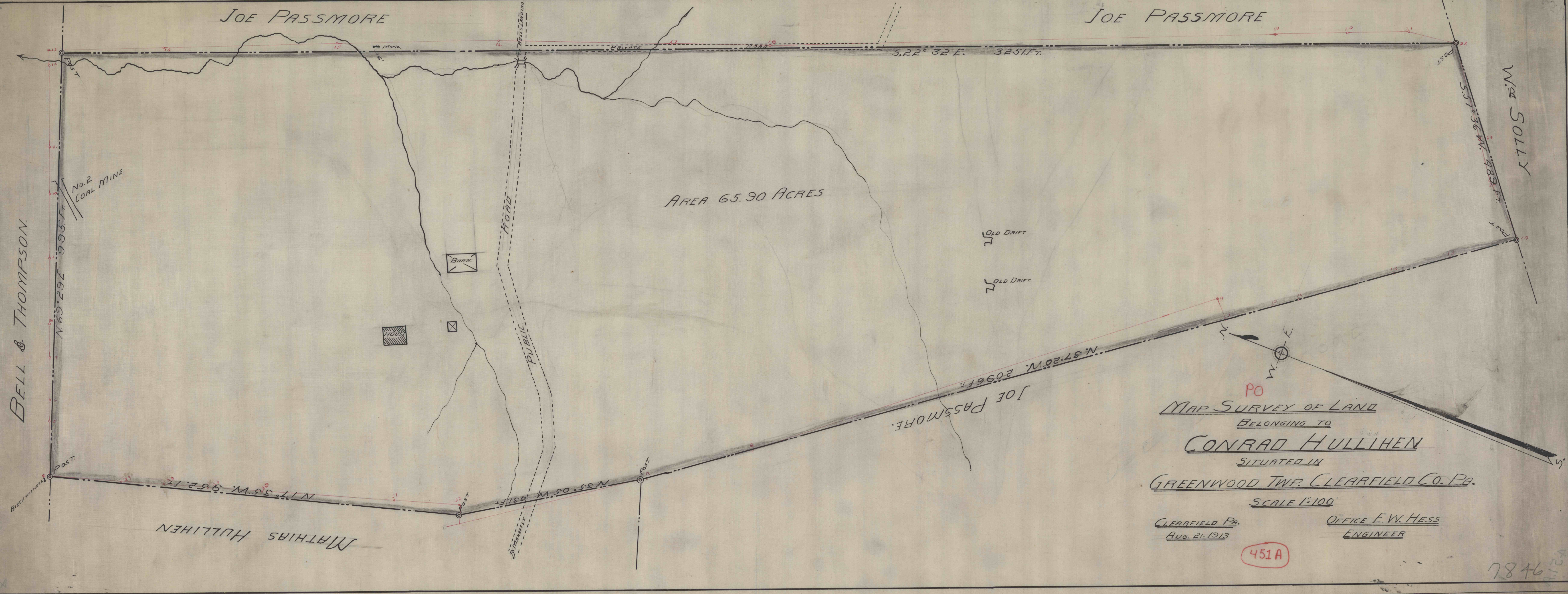


104P

A12A



AREA 65.90 ACRES

BELL & THOMPSON.

MATHIAS HULLIHEN

JOE PASSMORE

JOE PASSMORE

Wm SOLLY

PO  
 MAP SURVEY OF LAND  
 BELONGING TO  
**CONRAD HULLIHEN**  
 SITUATED IN  
 GREENWOOD TWP. CLEARFIELD CO. PA.

SCALE 1"=100'

CLEARFIELD PA.  
AUG. 21-1913

OFFICE E.W. HESS  
ENGINEER

451A

7846