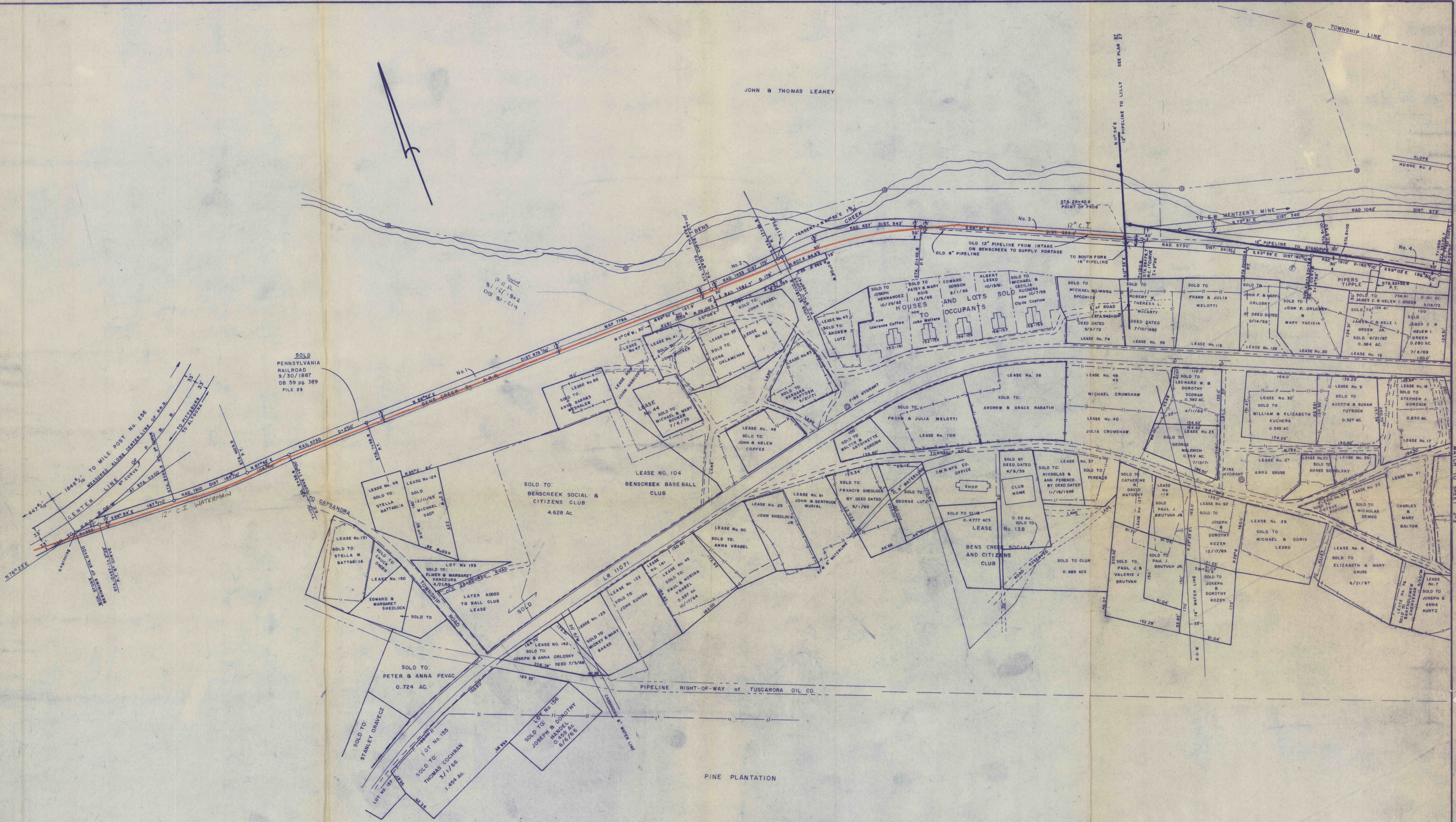


JOHN & THOMAS LEAHEY

SEE PLAN 27



SOLD PENNSYLVANIA RAILROAD 9/30/1887 DB 59 pg. 389 FILE 23

MAPPING TAKEN FROM SILLIMAN MAP ON 3/1/89 - COONEY MAP No. 779



2-2

**MAP**  
 LANDS OF  
 COONEY BROS. COAL CO.  
 SITUATE IN  
 CAMBRIA COUNTY PENNSYLVANIA  
 SCALE: 1"=100'