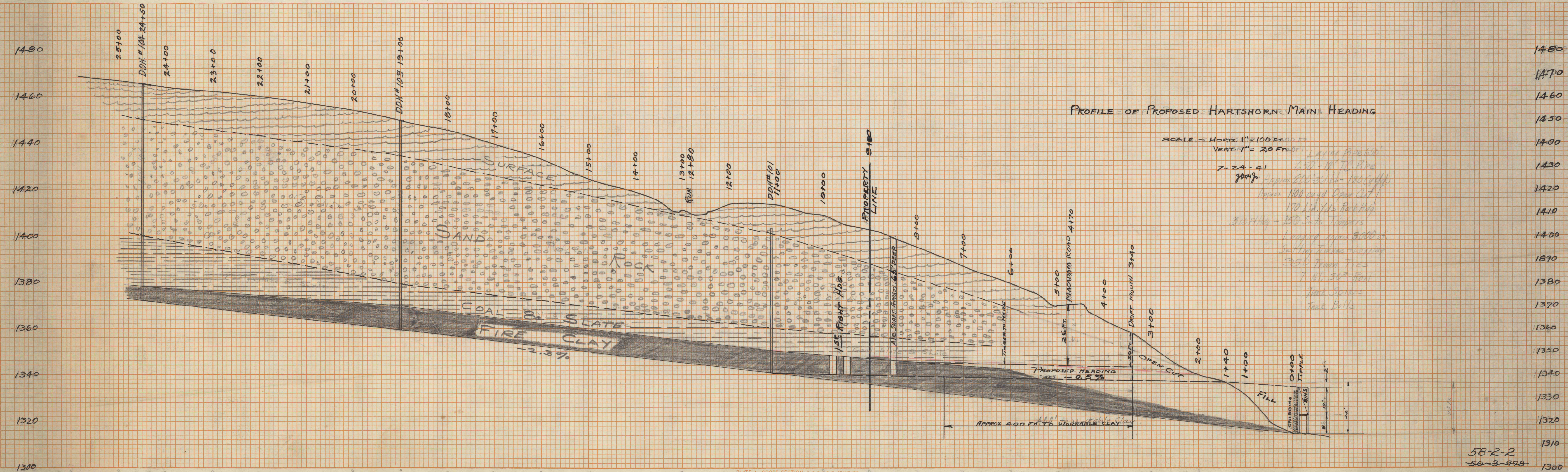
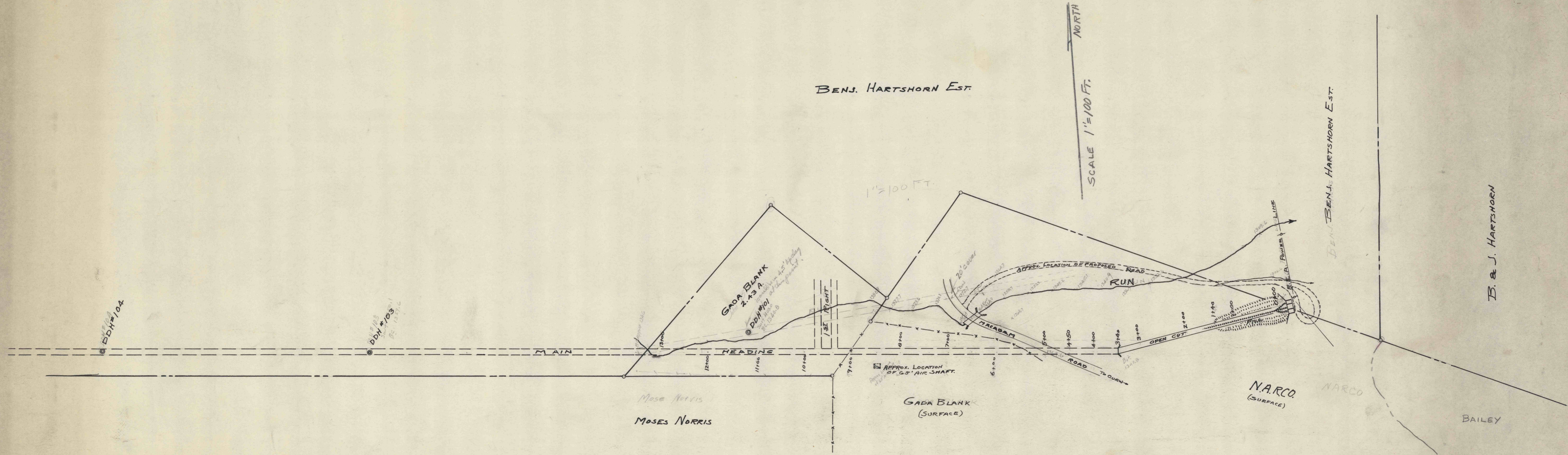


58-2
503-94

FINAL SURVEY
 SURVEYED BY
 DATE
 CHECKED BY
 DATE
 DRAWN BY
 DATE
 NOTE BOOK
 NO. 1000000000

ORIGINAL SURVEY
 SURVEYED BY
 DATE
 CHECKED BY
 DATE
 DRAWN BY
 DATE
 NOTE BOOK
 NO. 1000000000



7-24-41
 J.P.R.
 Approx. 100' depth Open Cut
 170' length heading
 300' filling - 150' slate timbers
 Leaping ropes 600' lbs
 300' 2" diameter timbers
 300' 2" iron ties
 1" dia. 300' ties
 1/2" dia. 300' ties
 1/2" dia. 300' ties

58-2-2
 503-948