

MAP OF HAZEN OWENS 2.69 ACRES

REFERENCE DATA

NORTH AMERICAN REFRACTORIES CO.

1012 NATIONAL CITY BANK BUILDING
CLEVELAND, OHIO

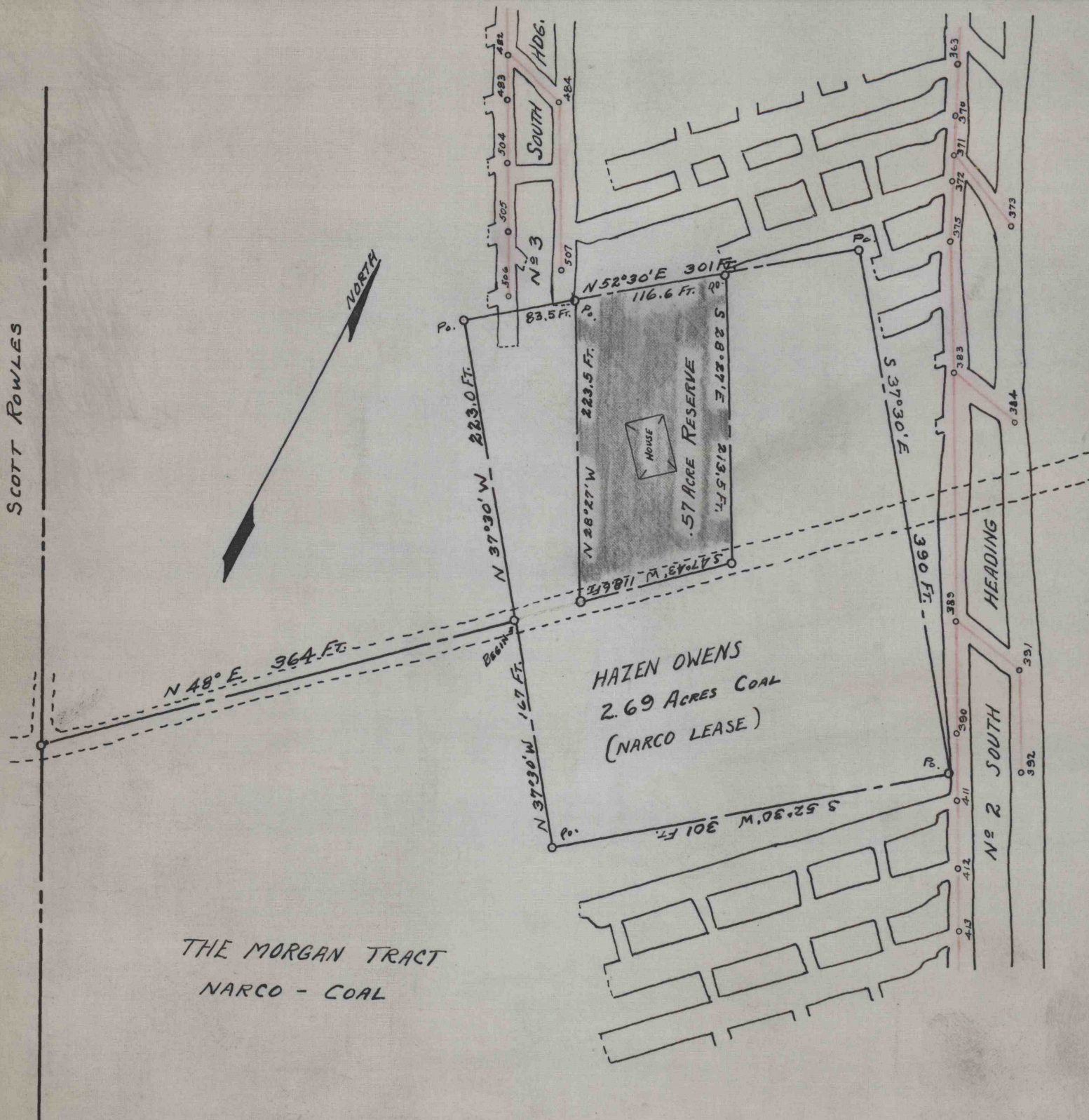
ENV. No.

SHEET No.

54-2-82

SCALE 1" = 100 FT.

DATE SEPT. 29, 1944



WORKED FROM 54-2-38

DRAWN BY *[Signature]*

CHECKED BY