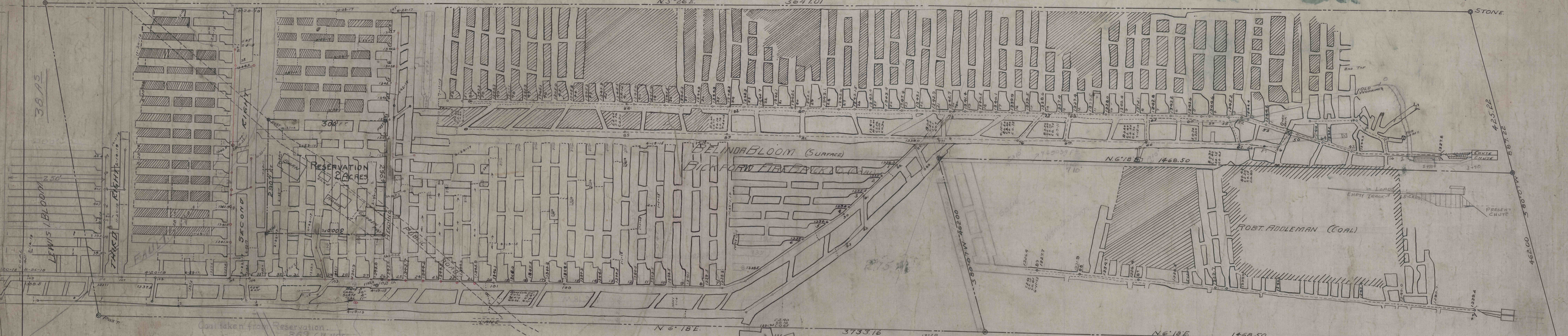


JOHN I. BLOOM

N. 5° 26' E. 3647.01

STONE



38.15

LEWIS I. BLOOM

SECOND SHAFT

RESERVATION PILES

BEINDA BLOOM (SURFACE)
BICKFORD FIRE BRICK CO. COAL

ROBT. ADDELMAN (COAL)

425.22

566.07 W

468.00

MAP OF COAL MINE

OPERATED BY

BICKFORD FIRE BRICK COMPANY

NEAR CURWENSVILLE PA.

MAY 1910

SCALE 1"=100'

C.E. SCHLICHER ENGR.

OFFICE F.W. HESS
ENGINEER

RESURVEYS

FEB. 8-1918

FEB. 14-1919

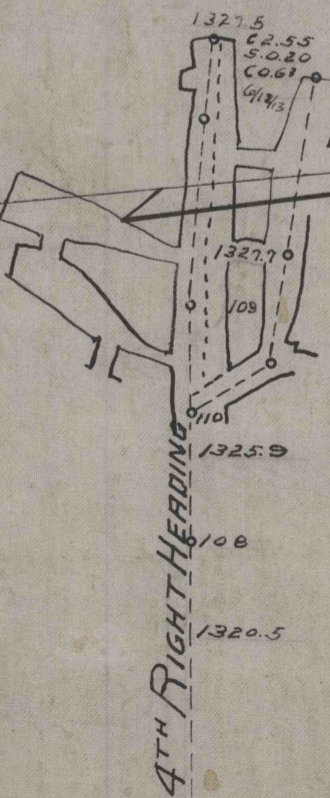
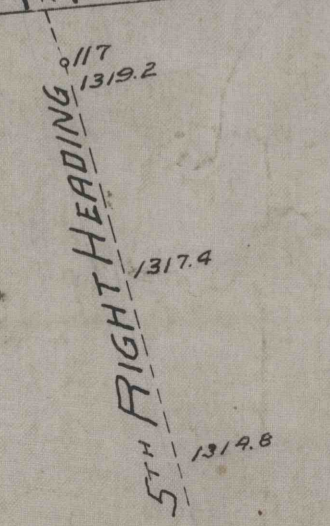
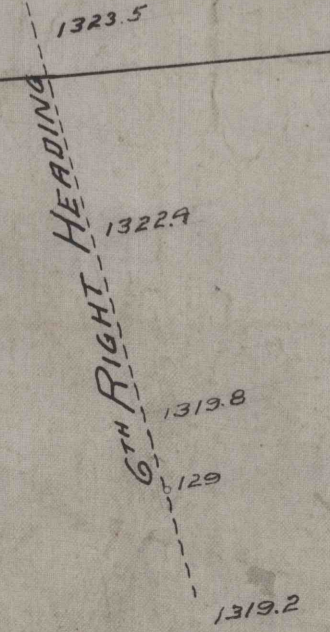
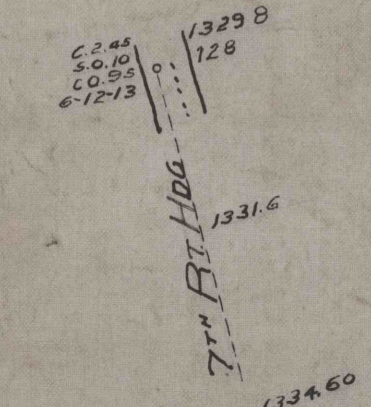
OCT. 1-1919

CLEARFIELD PA.

JULY 1913 APRIL-19-1915

MAY 1-1914 JUNE 23-1917

R.F. HESS JANUARY-1-1915 OCT. 23-1917



3003

5A-2-4