

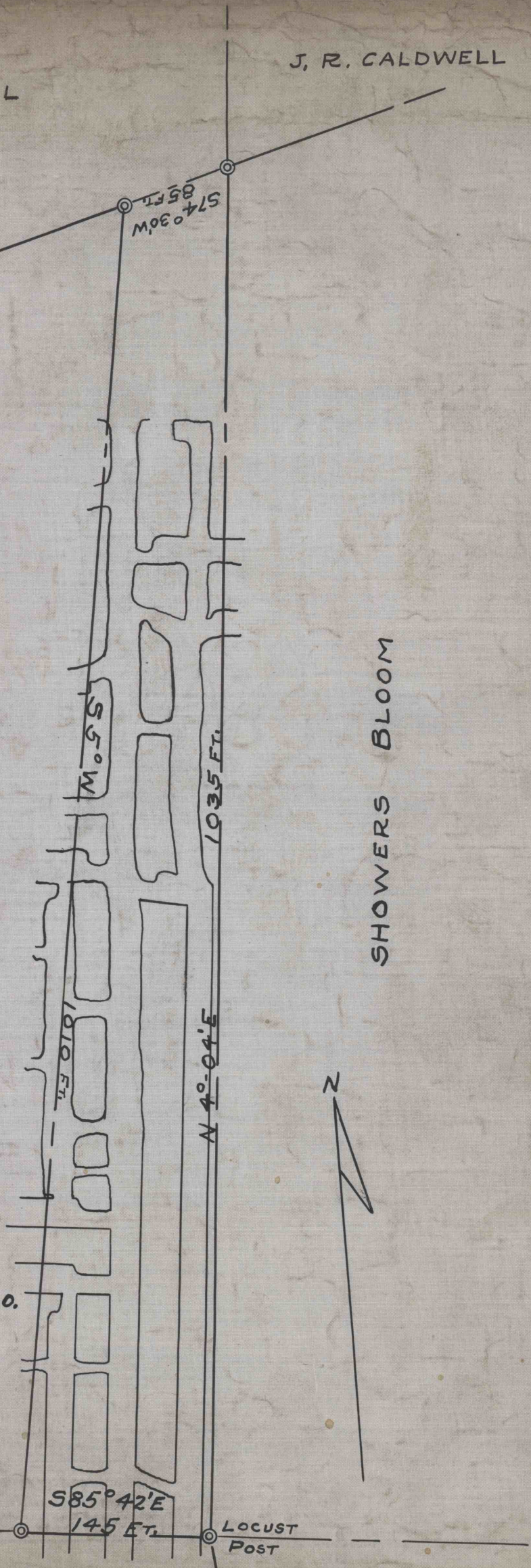
M. A. CALDWELL

J. R. CALDWELL

M. A. CALDWELL
19.55 A.S.

SHOWERS BLOOM

MAP SHOWING STRIP OF
COAL LAND CONVEYED BY
M. A. CALDWELL,
NORA CALDWELL, &
HUGH M. IRVIN
TO THE
CRESCENT REFRACTORIES CO.



C. P. ROWLES

CALVIN J. BLOOM

Traced from N-3008

SCALE 1"=100 FT. DATE NOV. 9, 1928

50-3-382
L1-164