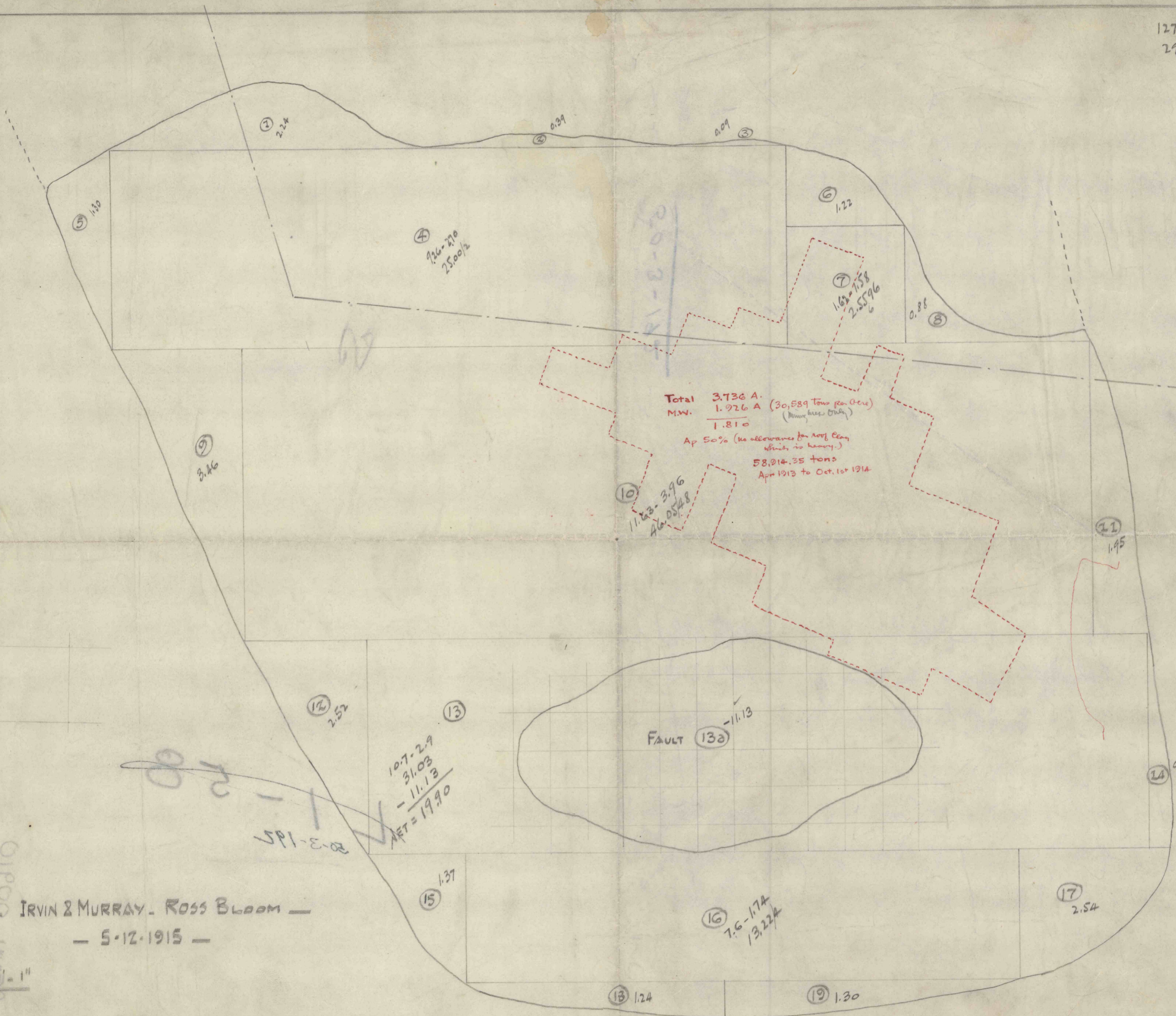


127.79 A ✓
29.3 Acres ✓



Total 3.736 A.
M.W. 1.926 A (30,589 tons per acre)
1.810 (Mun. use only)
Ap 50% (no allowance for roof clay which is heavy.)
58,014.35 tons
Apr 1913 to Oct. 1st 1914

107.29
31.03
- 11.13
NET = 19.90

11.53 - 3.96
46.0548

1.62 - 1.58
2.5596

9.26 - 2.70
2.5002

FAULT 13a - 11.13

IRVIN & MURRAY - ROSS BLOOM -
- 5-12-1915 -

01P09 - 11/11/15

5P1-3-125

5P1-3-125

07

08