

Lawrence Hay

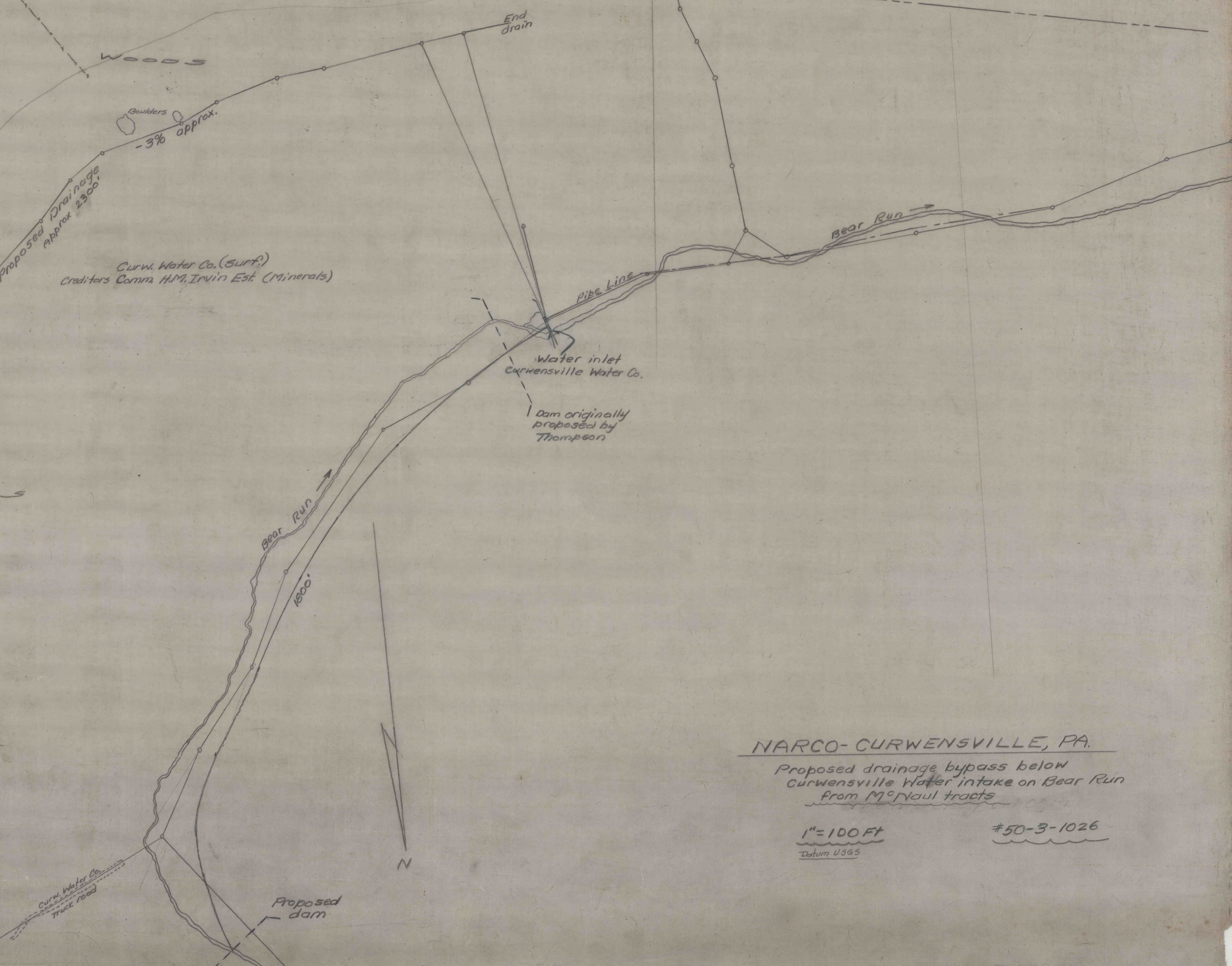
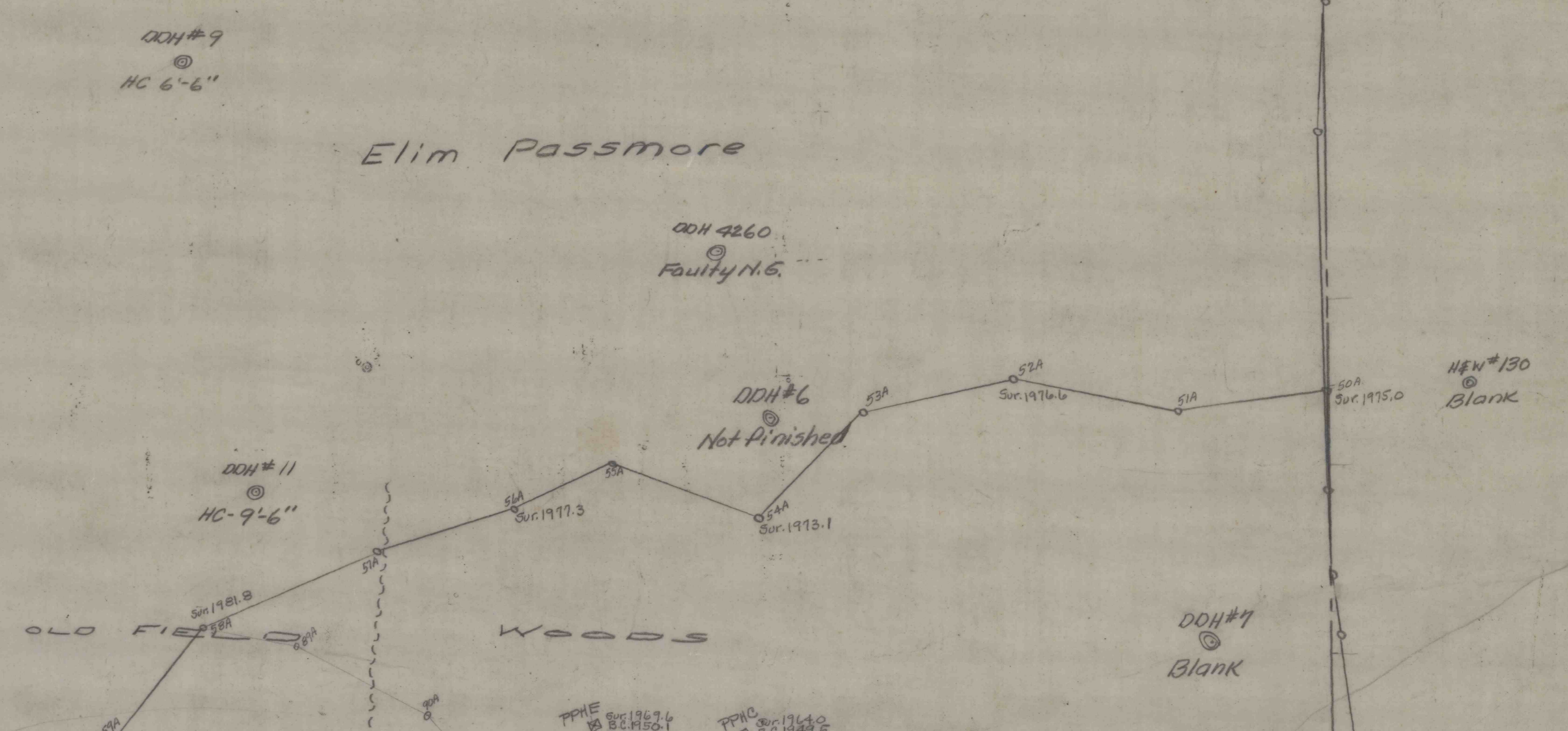
R.W. McNaul Est.  
Farm Tract

Elim Passmore

D. & A. Way  
Laurel Swamp Tract

Urban McNaul  
40 A's

Zachariah McNaul Heirs



NARCO-CURWENSVILLE, PA.  
 Proposed drainage bypass below  
 Curwensville Water intake on Bear Run  
 from McNaul tracts  
 1" = 100 FT  
 Datum U.S.S.  
 #50-3-1026