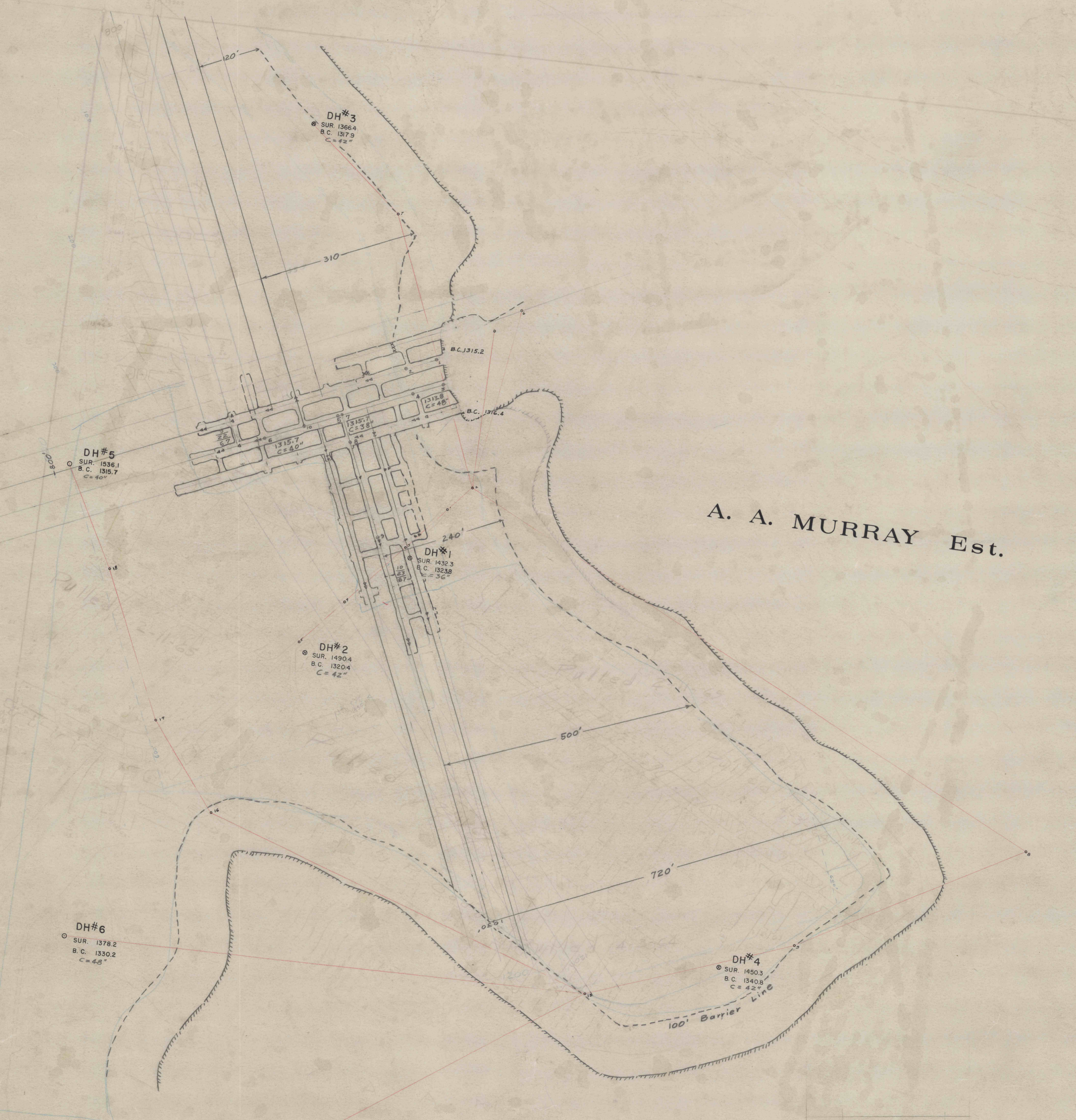
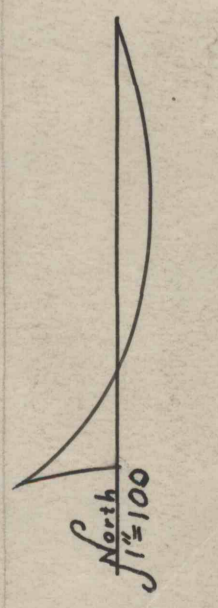


K. J. Coal



A. A. MURRAY Est.



D

Revisions		
7 Dec 67	Mine Sights	R.S.T.
2 Nov 67	Mine Works to date	R.S.T.
23 Oct 67	Mine Sights	R.S.T.
12 Oct 67	Relocation of 1st Left	R.S.T.
22 Sep 67	Mine Works to date	R.S.T.

BELFORD COAL COMPANY

12 Mine

GIRARD TOWNSHIP CLEARFIELD CO., PA.

SCALE — 1 inch = 100 feet

JULY 14, 1967 JOHN W. HESS
CLEARFIELD, PA. ENGINEER

4837

758A