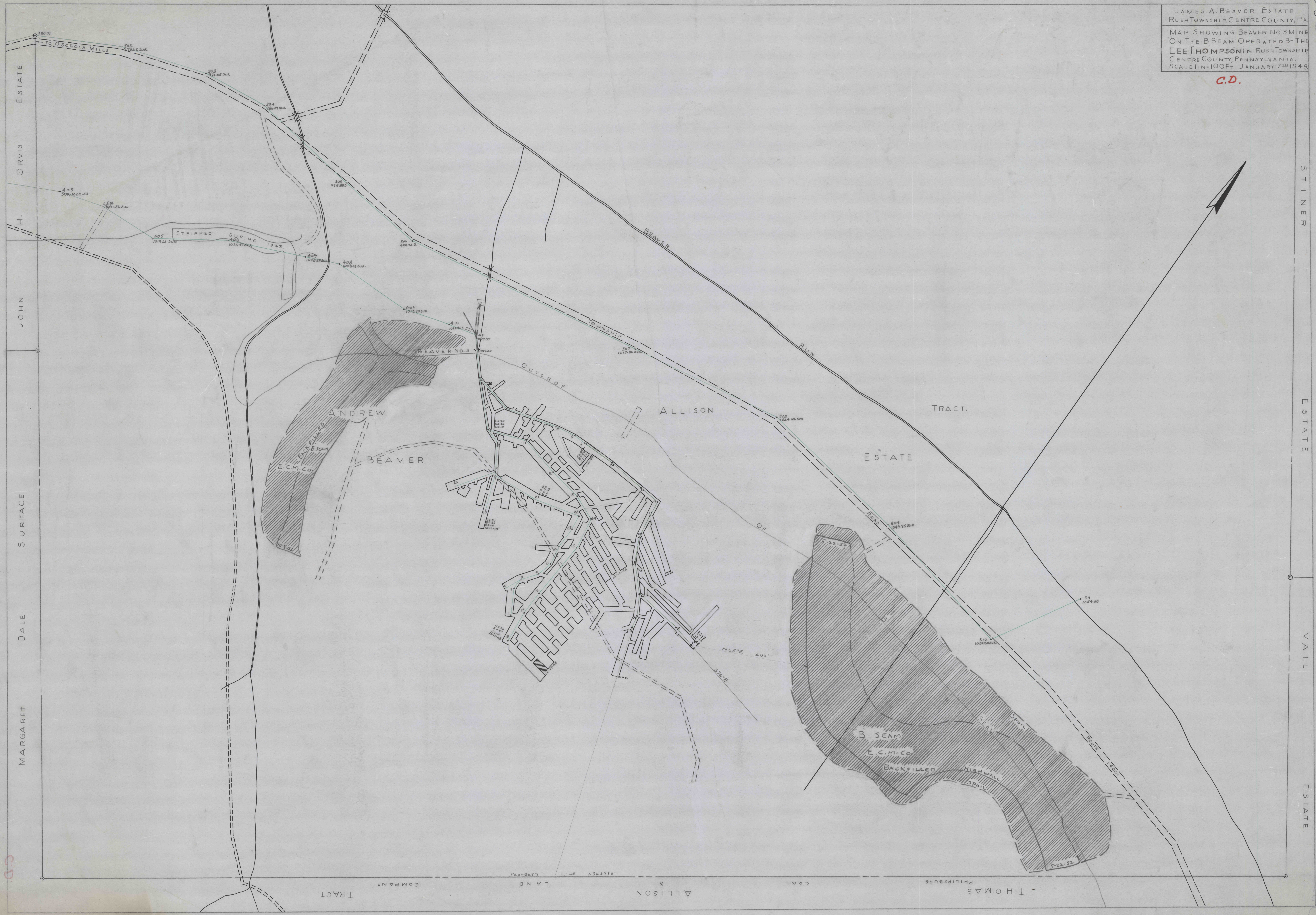


D

52174

JAMES A. BEAVER ESTATE,
 RUSH TOWNSHIP, CENTRE COUNTY, PA.
 MAP SHOWING BEAVER NO. 3 MINE
 ON THE B SEAM, OPERATED BY THE
 LEETHOMPSON IN RUSH TOWNSHIP,
 CENTRE COUNTY, PENNSYLVANIA,
 SCALE 1"=100 FT., JANUARY 7th 1949.

C.D.



ORVIS ESTATE
 JOHN H. SURFACE
 MARGARET DALE SURFACE

STINER ESTATE
 VAIL ESTATE

THOMAS PHILIPSBURG COAL & ALLISON LAND COMPANY TRACT.

4152